



December 2015/
January 2016

Watercolor Art Society – Houston

by Norm Wigington, *Co-monitor and Photos* by Carol Rensink, *Co-monitor*
Wednesday Model Lab

Just after noon each Wednesday, watercolorists of every skill level begin to gather upstairs in the studio at WAS-H's own building, 1601 Alabama. They lay out their tools for the day – broad brushes, thin brushes, branches of charcoal, various tubes and assorted pans of color. There are colored pencils, crayons, watercolor pencils and pigments pushed into sticks of color. They bring out shocking white papers and prepared surfaces. Regardless of age or the number of years spent developing their individual styles, these artists rearrange tables, set up student benches, tables and chairs, or easels, all focused on a two-part portable raised stage with a single light directed to the platform. Pushed up against the wall, the platform is where today's model will pose throughout the afternoon. For three hours, from 12:30 until 3:30, the artists stare with a student's intensity seldom seen in adults.



Nancy Fleagle's ink drawing

Washrag

N E W S L E T T E R

Watercolor Art Society - Houston

Norm Wigington,
Co-monitor

There is no qualification to setting up your workspace on Wednesday. Everyone is welcomed, and the only common thread among these wonderful people is a purpose, a driven purpose to improve skill sets.

Liz Hill, an accomplished and gifted artist, routinely attends the Wednesday Laboratory. Even after winning many WAS-H awards and becoming a Signature Member of WAS-H, she still enjoys the challenge of a live model. "This is a great group," Liz says between model poses, "of friendly artists. Outstanding!"

A newcomer to the Wednesday group, Lynn Chatham, agrees. "This group has helped my figure drawing skills immensely."

Many of the models are familiar to WAS-H artists, but the Wednesday Laboratory Coordinator, Carol Rensink, is always looking for the new model, the new shape or new figure to encourage the Wednesday participants. Models may be draped, in costume, or nude. There are female and male models. The experience level, and age of the models provide a continuum of expertise. Many come from the Houston area, but many

(continued on page 5)



December/January Events Calendar

December

Monthly Show Take-In – Dec. 5,
10 am - 3 pm;

Gallery Reception & Christmas Party – Dec. 11, 6 - 8 pm

No Board Meeting, General Meeting, Paint-In or Paint-Out

Gallery Holiday Closure – Dec. 25,
and Jan 1

January

Board Meeting – Jan. 4, 9:30 am

Monthly Show Take-In – Jan. 9,
10 am - 3 pm;

General Meeting & CaFÉ help –
Jan. 10, 1:30 pm

Demo – Sarah Kitagawa

Gallery Reception – Jan. 15, 6 - 8 pm

Entries for International Exhibit due – Jan. 15

Paint-In – Jan. 16, 9 am - 3:30 pm

Paint-Out – Jan. 16, 8:30 am – 3:30 pm

Wed. Model Lab – 12:30 - 3:30 pm

Open Studio – Fri., 10:30 am - 2:30 pm

(when no workshops are scheduled)

WAS-H OFFICE

1601 West Alabama at Mandell
Open Tuesday-Saturday
10:00 am to 3:00 pm.
For information please contact:
Martin Butler, Administrative Assistant
713-942-9966
www.watercolorhouston.org
email: was-h@sbcglobal.net

WASHRAG INFORMATION

DEADLINE for copy, photographs and advertising for the *Washrag* is 4:00 pm, the 5th of each month except June and December. Material not received by the deadline will appear in the next month's *Washrag*. Please submit items via email or typed.

ADVERTISING RATES

Effective September 2001

Full page (7.5" by 10") \$75

Half page (7.5" by 4.7") \$50

Quarter page (3.7" by 4.7") \$25

One column (30 words) \$15

Area Teachers Listing \$25 (per year)

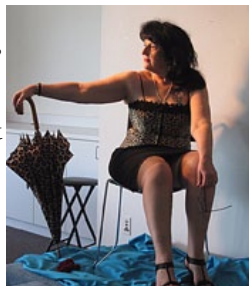
Payments for *Washrag* ads must be received no later than the 10th. Please mail check to WAS-H.

Column ads should be typed. All other ads must be print-ready. Photos must be 300 dpi. Submit material to:
WAS-H 713-942-9966
1601 West Alabama, Houston, TX 77006,
or via email to Rosalie Ramsden, ramsdendesign@earthlink.net. Please put WAS-H in subject line of your email.

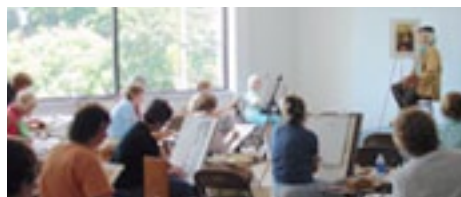
Wednesday Model Lab

The Wednesday Model Lab group will continue to meet every Wednesday, 12:30-3:30 (unless there is a workshop scheduled) at WAS-H.

Please email me crensink.art@att.net, and I will let you know the model each week before the session. So y'all come with your drawing and painting gear and do your own thing for three quiet hours of model time. It is a wonderful opportunity. Carol Rensink, 713-299-4136



Recent model for Wednesday model lab group



2 December 2015-January 2016

General Meeting - January 10

Social 1:30, Meeting 2:00

Demo: Sarah Kitagawa

Sarah Kitagawa, WAS-H Elite Signature Member, will be the Demo Artist at the



Lioness Strength, mixed water-media, by Sarah Kitagawa.

visual effects to create or simply discover. I have recently been incorporating acrylic and watercolor markers, and I am excited to share the adventure with my fellow WAS-H artists."

— Lynne Woods, Vice President

Jackie Liddell, WAS-H Elite Signature Member, demonstrated various multimedia techniques she uses and talked about how they express her ideas. This was this reporter's first mixed media and collage demonstration, so forgive me if there are too many details. It was amazing!

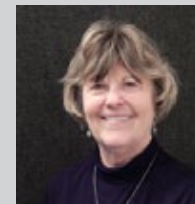
Jackie possesses a Master of Art degree and previously taught art at Clear Creek High School, where she was Educator of the Year, and she taught drawing at University of Houston Clear Lake, and at Alvin Community College, where she created the curriculum for watercolor painting.

Jackie's mixed-media painting *Haunted Room with a View*, was selected to be included in this year's *Incite 3 - The Art of Storytelling/The Best of Mixed Media* book just released on October 14th. These achievements, plus many more, partner with her effervescent personality and wonderful creativity to make her a wonderful presenter at WAS-H.

Jackie honored her instructor, WAS-H Elite Signature Member Shirley Sterling, and then jumped in to introduce us to Barnacle Bill, her blue crab muse, to show that what excites us as artists is sometimes very surprising. Another surprise was some of the materials used today.

Jackie's demo painting, *Sushi*, included her favorite blue crab and a fish skeleton. It is a watercolor mixed media with collage. She showed us her values and composi-

(continued on page 3)



From the President

by Beverly Aderholt, President

Dear WAS-H Members,

As we near completion of 2015 and celebrate our 40th anniversary, we have much to be thankful for. We are celebrating the members who gave us our stately building with no debt and the structure of our organization with well written by-laws and a history of top-notch teachers and important community outreach. During the past two years, you have given us the funds to improve our studio equipment and set up a well-functioning website and you have co-operated with us in the change from a paper based to an on-line system.

We are improving building safety and security with an improved lock on the front door, repair of building gates, and online storage of business records, and instituted a fire drill to acquaint our senior class with the upstairs building exit and gate key hanging by the exit door. We have had five trees cut down behind the building to mitigate flooding and fed the magnificent oak tree in front of our building, and are now studying bids to repair our sprinkler system. We are developing a system to recruit volunteers and develop leadership. The type of classes we offer is more diverse, and many classes are full. We are publicizing our events and had 300 attendees at the International Exhibition reception last spring. We have hired Haley Bowen, our benefactor Jack Bowen's granddaughter, to work part-time in the spring to help us attract young members. We have received a \$10,000 grant from the Houston Arts Alliance to support the International Exhibit. Several of our members have helped us in special ways: Jan McNeill has received matching gifts from corporate and family foundations, Marsha Harris gave us a bequest in her will, and Richard Lindeman is providing us with funds to begin the re-carpeting of our upstairs studio. Our Board of Directors studies all options carefully to stay within budget.

So we will celebrate Christmas with thankful hearts for our membership, our Board of Directors, and our city. Merry Christmas to you all.
Beverly

(continued from page 2)

tion sketch and her contour line drawing with a few areas protected by masking fluid. She often uses a ruling pen to apply it, but encouraged us to use unconventional materials to get varied results, such as the Spanish moss she used for highlights in a girl's curly blond hair.

Jackie introduced Speedball's Elegant Writer pen to outline the fish. Water brushed inside the lines caused the ink to bleed and separate into beautiful pinks and blues. Blotting with tissue paper often lifted the blues and left the pinks. Pigment was added by brush to almost finish the ghostlike skeleton. Once set, the pen ink is permanent.

Another technique introduced in the rocky area of the painting was Golden modeling paste, a texturing medium similar to Gesso, but better because it doesn't crack when dry. Jackie applied it to the 140 lb CP paper with a plastic knife and pressed/lifted various shells and rocks in it to create interesting texture. Because the paste needs to dry for 24 hours before painting on it, Jackie pulled out a second partially finished painting and continued collaging various papers, unfinished and painted ones.

Beth Graham — WAS-H Member

Member Teachers Listing

Sallie Anderson Studio
Galveston, 409-763-2265

Diana Brandt, Memorial, Houston
Beginners to Intermediate, 713-560-2324
watercolor70131@yahoo.com

Barbara Jeffery Clay, AWS
116 Huckleberry Dr.
Lake Jackson, TX 77566, 979-292-8058

Carla Gauthier, NWS
League City, 281-384-2473,
carla.gauthier@yahoo.com

Susan Giannantonio, Katy, TX, and
Mayville, NY, lucholiz@gmail.com,
www.artandstring.com

Caroline Graham, WAS-H
Museum District
713-664-6589, cgrahamart@hotmail.com

Joanie Hughes
For Beginners (inside 610), 713-426-6767,
joan-hughes@comcast.net

Nellie Kress, WAS-H, TWS
Katy, 281-347-0248, nkkress@msn.com

Gay Paratore, BA, MEd, TWS, NSA, WAS-H, Classes: Tues. - Santa Fe Studio,
Thursdays - TAACCL, 409-316-1005

Carol Rensink, WAS-H
Figure Drawing & Anatomy
713-299-4136, crensink.art@att.net

Mary Rustay, Cell 713-703-1533 Watercolor for seniors at WAS-H, no charge.

A.J. Schexnayder, AWS, NWS, WAS-H
N.W. Houston, 281-444-7524
aj-schexnayder@att.net

Shirley Sterling, NWS, TWS, WFS, WAS-H
Clear Lake, 281-474-4214

Mary Wilbanks, NWS, WHS, WAS-H,
Workshops and critiques. 281-370-7879,
marywilbanks@gmail.com

SpeedyPrinting
3433 West Alabama, Suite C, Houston, TX 77027
713.877.8466 Facsimile 713.877.8557
craig@speedyprinting.net

3 December 2015-January 2016

Saturday Paint-In Splash January

Margaret Bock and David Muegge, *Paint-In Co-Coordinators*

Values

Carla Gauthier
Sat., Jan. 16, 9:30 am - 3:30 pm
(setup at 9:00-9:30)



New Orleans Jazz by Carla Gauthier

Everyone has a few paintings that despite a great start had a less than impressive finish. But something kept you from throwing it out – maybe some interesting textures, brilliant colors, or strong composition. Leaving work half-finished deprives you of the chance to learn what you are capable of, of the solutions you can come up with. In this class we will learn a variety of ways to judge what your painting needs for a stronger finish, and the ways to get there – resurrecting your lights, punctuating with darks, correcting drawing, color, focal issues, and recomposing if necessary! There will be a checklist of ideas to reboot your paintings and get your creative juices flowing. The bonus is that tackling issues with older works helps you be more bold and decisive with new paintings because you are expanding your “watercolor vocabulary.”

What to bring?

- ◆ 3 older paintings that did not meet expectations for whatever reason

(continued on column 2)

4 December 2015-January 2016

Thanks, Monica Pate

Margaret Bock, *Paint-In Co-Coordinator*



Monica Pate led a very interesting and challenging Paint-In.

Her subject was a bowl of grapes to be painted in her purist style. Monica demonstrated how she would begin, then guided the members individually working her way through the room. The 33 artists present loved the process and challenge and went home with great results. The two students from the HSVPA enjoyed the project and visiting.



Paint-In Calendar

December NO PAINT IN
January 16*, **Carla Gauthier**, Values
February 13, **Carolyn Graham**, TBA
March 12, **Erik Sprohge**, TBA
April 9, **Robin Avery**, Shapes
May 14, **Les McDonald**, Realism
June 11, **Gerry Finch**, Yupo
July 16*, **Kim Roots**, Collage
*Third week instead of second

Wednesday Model Lab continued

(continued from page 1)



Xylina Wu's watercolor

are new to Houston and have arrived from nations around the globe. This is only fitting for a city as diverse as Houston.

For a beginning artist, the model session provides an opportunity to test their powers of observation, rendering, and portrayal of the human figure at different skill levels. The afternoon session usually begins with a warm-up period of quick, five-minute poses. This is followed by longer, twenty-minute poses that take up the rest of the afternoon. The models may stand, sit, twist, recline in a chair, lean, or perch on a barstool.

“I am a newbie,” said Chris Bunge, “with no formal training. Figure drawing at WAS-H has been a safe, nonjudgmental place to practice and learn.”

Bill Hart agrees. “I like WAS-H,” he said, “because the environment is conducive to art.” The creative atmosphere is helpful for many artists – and while there may be a soft tune in the background, the willingness to share and show is also a creative incentive. For Linda Bolet, the Wednesday Laboratory is “... a wonderful, creative environment to explore figurative drawing.”

A contribution is requested to help

defray the costs of the model. For WAS-H members, the fee for the afternoon is \$10; for nonmembers, it is \$14. Cash and exact change is best since WAS-H and the Laboratory cannot maintain a cash box. For many WAS-H members, the session coordinator will notify participants through email and website postings of upcoming events, including the name of the model and whether or not the model will be draped. Persons who wish to be notified must contact Carol to receive weekly notices. General information is available to the public on the WAS-H website at www.watercolorhouston.org. While the listing on the website is only a general description, in order to know more details about the model and session, art-



Patricia, a Wednesday Model Lab favorite

ists should check the WAS-H Facebook page and receive the weekly reminder.

“Everyone is invited to attend,” said Carol in describing the sessions to others; “the Wednesday Lab wants everyone to be comfortable and to come back!”

In addition to expanding resources and acquiring more and more experience in portraying the human figure, there are other reasons to join the Wednesday group. Some participants want to observe other practicing artists.

There is a chance to learn about new materials or new opening exhibitions in Houston. Others want to relax. Niki Palmer says, “Wednesday Model Lab at WAS-H is one of the most relaxing afternoons of my week.” She adds, “It is very therapeutic!”

For Norm Wigington, the opportunity to spend an afternoon thinking about painting is genuinely fun. “I like thinking about line and color. I worry

about water and paper weight. And when that accidental ‘Oooops’ moment shows up, as it always



Alice Roger's drawing

does, I take it as a sign of watercolor life. I know my colors are still alive and have their own sense of amusement.”

Having fun is a sentiment shared by many other artists. Ksenia Annis also felt welcome during her first visit. “My first time here,” Ksenia said, “and it’s a lot of fun already.” But having fun does not mean the group is not serious. “It is a really fun and yet professional group,” said Xylina Wu.

If you want to know more about the Wednesday Model Laboratory or how to use the Wednesday afternoons to their best advantage, visitors may want to use the Wednesday afternoons to their best advantage, visitors may want to use Facebook. WAS-H has its own Facebook page at www.facebook.com/WASH-Watercolor-Art-Society-Houston.

To receive the weekly email about the Wednesday Model Laboratory or for more information, please contact Carol Rensink at 713-299-4136 or Crensink.art@att.net. The session meets every Wednesday, unless a WAS-H workshop is scheduled for the upstairs space.

5 December 2015-January 2016

Art on the Go

by shirl riccetti

TRAVEL TIPS

“As artists we must create, and almost nothing is more inspiring than the new sights we find in our travels”

— Susenne Telage

And in this vein, Susenne always feels prepared by having her small art kit with her. She stated that, “Inspiration pops up when you least expect it.” This attitude helps her enjoy that “impromptu lesson with her Grandies and friends.”

Susenne has taught and/or guided the making of watercolor postcards and notecards. These creations, she finds, delight and please both the artist and the recipient.

On her trips, Susenne feels that photography is her biggest and more creative effort. She uses these photographs as a stepping stone for her paintings. She recently took a workshop from Ken Hosmer, who used the app Photoshop Elements. Ken showed that this app helps to improve compositions, crop, and guide in the design of the final sketch of a composition.

Susenne admits that she is still working “on that technology.”

Thank you, Susenne, We all love these learning tools that help us continue in our art, and especially, as they enhance our traveling.

carpe diem,
Shirl Riccetti

Do you have a travel story, tips, laughs?

sriccetti@comcast.net

(continued from column 2)

and makes recommendations to the Board regarding repairs. Gets bids and interfaces with subcontractors. Makes “handy-man” level repairs.

Volunteers Wanted

by Lynne Woods, Vice President

As a society of artists and art lovers, WAS-H lives and thrives by the involvement of its members. Collectively we create WAS-H by contributing both our artistic talents and our time.

We are rewarded daily with the awareness that we are sustaining a welcoming and vibrant arts community — buzzing with excitement and open to all — in the heart of Houston.

If you would like to play a greater role, please consider the following volunteer opportunities...

Technology: Contact Karen Stopnicki, khouston006@yahoo.com.

• **Website Page Coordinators** — Assist Web Director to update webpage(s) monthly. Training provided. Need basic computer skills.

Gallery Exhibits: Contact Louise Bateman, louisehbateman54@gmail.com.

• **Photographers** — Take photos at monthly gallery receptions and award ceremonies, Paint-Ins, and other events. Need basic photography and computer skills.

International Exhibit: (IE): Contact Dawna Hasara, dawna.hasara@gmail.com.

• **Uncrating and Crating Team** — Assist in removing paintings from mail crates and re crating at end of IE.

• **Reception Team** — Assist in planning menus, shopping, preparing food for servers, kitchen cleanup, gallery decoration and cleanup; assist with artwork sales during receptions.

• **Catalog Coordinator** — Collect photos and copy for IE catalog, coordinates with designer and printer, proofread final copy, and mails printed catalogs to artists.

Building Director: Contact Lynne Woods, lynne.woods@yahoo.com.

• Evaluates issues that arise with the WAS-H building and physical property,

(continued on column 1)

Art Happenings

WAS-H is pleased to share some of Laurin McCracken's recent accomplishments. First, two of Laurin's watercolors (Stereopticon and Churchill Cigars) were selected from among 685 artworks to be included in the Beijing Biennale 2015, which ran from September 24 to October 15. Stereopticon received a further accolade by being one of only 10 of the 685 artworks in the show purchased by the National Museum of Art of China for their permanent collection.

Laurin is also involved with another international biennale: The Shenzhen International Watercolor Biennale (SIWB) 2015, which is being exhibited in The Shenzhen Art Museum in Shenzhen, China. Laurin is sponsoring The U.S.A. Award for an Artist under 30 Years of Age. In addition to being a sponsor for the biennale, Laurin is also an exhibiting artist. His watercolor Still Life with Tea was one of 233 artworks selected from among 3,779 for acceptance into the show, which will open on December 7, 2015, and close on January 10, 2016. After the close of the Biennale, the 233 artworks will travel for a year in a six-city national traveling exhibition. The itinerary for the traveling exhibition will be released after the close of the biennale.

Opening the day before the SIWB at the Louhu Art Museum (also in Shenzhen, China,) is the National Watercolor Society (NWS) International Small Image Exchange Exhibit 2015-2016, a joint exhibition of the NWS and SIWB, which includes 100 paintings by NWS members and an equal number by Chinese watercolorists. Laurin's watercolor Bottles on Wooden Box will be representing NWS. This show will be up until January 10, 2016. The show will also travel to the NWS Gallery in San Pedro, California, where it will hang

(continued on page 12)

Winter/Spring 2016 Classes!

by Jan McNeill, Education Director



WAS-H teacher Caroline Graham at her SOLD OUT Creating Atmosphere workshop

Check out the enclosed brochure for the WAS-H 2016 Winter/Spring classes – or better still, go online to the WAS-H website www.watercolorhouston.org/classes-and-workshops. In the online version, not only will you get to see the write-ups and images in glorious color, you can sign up online with no fuss, no muss, and at any time day or night!

Don't delay in signing up, as you'd hate to miss out. (WAS-H had five sold-out classes/workshops in the fall.)

WAS-H Future Major Workshop Artists & Dates

Anne Abgott
<http://www.anneabgott.com>
March 7-11, 2016

Mary Whyte
<http://www.marywhyte.com>
October 10-12, 2016

Stephen Quiller
www.quillergallery.com
March 10-17, 2017

Michael Reardon
www.mreardon.com
October 9-13, 2017

Iain Stewart
<http://iainstew.fineartstudioonline.com>
March 5-9, 2018

Monthly Gallery Show Themes

2015

- December - Small Paintings

2016

- January - Abstract
- February - Texas
- March - International
- April - General/No Theme
- May - Intergenerational - Animals Real or Imaginary
- June - General/No Theme
- July - Student Show
- August - Experimental
- September - City, Landscapes, Seascapes
- October - Members
- November - General/No Theme
- December - Small Paintings

QUESTIONS:

For December contact:

- Louise H. Bateman, Gallery Co-Director
- Louisehbateman54@gmail.com
- 713-703-6889 Or Terry Baird, Gallery Co-Director
- 713-523-9008

Framing & Matting Requirements Monthly Gallery Shows

When entering our Monthly Gallery Shows, please carefully read the matting and framing requirements. If a painting does not meet the requirements, it can be rejected by the Gallery Director and/or Juror. For most months the regulations are as follows:

- Frames must be plain, simple grooves only
- White or off-white mats and liners
- Frame width must not exceed 2 inches
- Must be strung with wire for hanging
- Plexiglass, if glass is needed
- Paintings not to exceed 48" in height or width, frame included

Some months, such as December have different requirements, so please read each month's prospectus prior to entering.

If you are unsure, please contact the Gallery Director for guidance.

Brushes By the Beach®

PLEIN AIR CONTEST
ON GALVESTON ISLAND, TEXAS

Open to any artist using the Plein Air Technique
Early Bird Entry Deadline: November 6, 2015
Plein Air Contest Period: November 13 - 21, 2015

Cash prizes to first, second and third winners
To enter, and for more information:

gloegallery.net/Brushes-By-The-Beach-PleinAir
or call
409 370-7350



ISLAND TIME Legacy PleinAir

46th Annual Members Exhibit

The 2015 Members' Exhibition produced a riot of color which filled our gallery for the month of October. The top winners of the show were:

First Prize, Carla Gauthier

Second Prize, Gay Paratore

Third Prize, Karen Lindeman

Directors' Award, Kirby Attwell

President's Award, Connie Bosworth

Honorable Mentions:

Mohammad Ali Bhatti, Jan Shrader, Monika Pate, Pat McEnery, Kim Granhaug

Merchandise Awards:

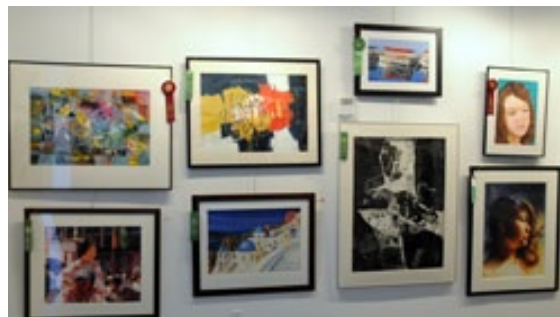
Keiko Yasuoka, Ruby Allen, Robin Avery, Cleo Ceeney, Linda Jarnagin, Valerie J Randal, Thuy Thi Cam Nguyen, Daniela Werneck, Tamara D. Kontrimas, Gena Haber, Carol Watson, Kay Stern, Cliff Hamberlin, David Connolly, Robert Ruhmann, Patty Browning.

The total Cash Awards totaled \$1800.00 and the value of Merchandise Awards was \$3427.00.

The reception was an elegant affair with wine and hors d' oeuvres in the downstairs gallery and presentation of the awards upstairs. Our juror and workshop presenter of the week, Ken Hosmer gave us an inspiring talk. Mojan Filsoofi, *Annual Members Exhibit, Director*



Left to right: Cliff Hamberlin, Keiko Yasuoka, Linda Jarnagin, Beverly Aderholt President, Connie Bosworth, Ruby Allen, Mojan Filsoofi AME Director, Key Stern, Gay Paratore, Carla Gauthier, Carol Watson, Karen Lindenman, Mohammad Ali Bhatti.



AME Workshop

Developing Color Energy – Ken Hosmer Workshop



Demo painting by Ken Hosmer

Ken Hosmer, our juror for the Annual Members Exhibition and our workshop instructor, describes himself as a colorist. His paintings are fresh and energized, he uses transparent and high intensity watercolors and he dances across the painting with warm and cool colors. As an artist and instructor he is methodical in sharing his knowledge, and from one day to the next builds on what he taught the day prior. He demoed numerous subjects: florals, boats, people, landscapes, and animals, and his students circled up after each demo to examine his bold brushstrokes of paint.

One of his base techniques was to cre-

ate an ink study as a value and composition foundation. Even these were beautiful paintings in themselves. While he started with many of the basics of design such as: value, color, and texture he took each one a step beyond to help the workshop participants understand how each plays a role in a painting. He encouraged the participants to use the workshop to experiment with these design principles. A simple example with values was while you want to have dark, medium, and light values in a painting, he emphasized that "most detail occurs at the edge of a value change."

Ken exaggerates the use of light pathways (both dark and light) to move the viewer through the painting and connect to the center of interest.

Each day, Ken shared his knowledge of color: use of warms and cools, color zoning, transition colors, and weaving colors. Mornings were spent with his review of key topics, followed by a demo. In the afternoon, the workshop participants went to work on their paintings while Ken visited with each artist to provide input and direction.

Ken is a gentle and patient person who was raised in El Paso and currently lives in Nebraska. He loves conducting workshops and gets inspired by his students.

At the end of the week, he had each workshop participant share two pieces side by side. He gave a critique that was shared by the entire group, and he reaffirmed his learning principles of the week.

This was Ken's first trip to Houston and to WAS-H. He had a chance to visit the Museum of Fine Arts-Houston and was hosted each night for dinner. He was impressed by the number of volunteers that are involved at WAS-H and was thankful for the many that shared to make his stay pleasurable. Thank you to all at WAS-H for a great week!

Robert Boutell, Volunteer of the Month

by Beverly Aderholt, President



As often happens when we learn about a friend's life before we knew them, Robert Boutell's life story has surprised me with its tale of coming a long way to end up in Houston, Texas, at WAS-H. Robert was born in northeast London and grew up south of London in Caterham. He spent seven years at Nottingham University and graduated with a PhD in geology. He worked for Amoco and came to Houston to work for 25 years, mostly in international oil and gas exploration, including the Middle East, East Africa, China, and the Caspian Sea. His extensive travels led to numerous international business trips to unusual and exotic places and to some hair-raising experiences. Once on a trip to Nairobi, Kenya, at the Intercontinental Hotel two blocks from the Presidential Palace, Robert was confronted with armed guards carrying sub-machine guns in every hall and entrance. The President of the Central African Republic, fearing assassination as often happened, was staying there and the guards were protecting him!

On a trip to Moscow for a conference he went out for a walk and decided to go to the Kremlin in Red Square, not realizing it was the day of the presidential election. Not to be deterred, Robert crossed a barricade, followed the crowd, and ended up looking at Lenin in his

10 December 2015-January 2016

glass tomb. Another conference in Somalia offered a field trip for these geologists to look at rocks, of course. The trip became more interesting when, 50 miles out of Mogadishu, a truck full of teenaged boys carrying AK-47s pulled up behind them. You probably remember that Somalia and Ethiopia had an undeclared war for years and it was not unusual for one army to make forays into the other. These boys turned out to be protection for the rock hunters!

Robert also has friends in Houston who came from other countries, especially Vietnam. He visited his friend Brian's family in Vietnam and also mentored Brian's nephew from age 4 until he was a teenager. Some of us at WAS-H became aware of these friendships when he would bring us vegetables from his garden and they almost always included Vietnamese squash, which he grew for these friends.

Robert retired from Amoco during the downturn in the exploration business and subsequently became involved in real estate with various rental properties. He has really retired now and spends his time at his home in Sugar Land, where he has an extensive garden which he spends his time tending ... also a fishpond.

Robert was the treasurer at WAS-H for three years, and the story of how he came to us is also unusual because he isn't an artist. He was a friend of Jerrie Gast, a former WAS-H president, and she somehow talked him into taking on the job. He likes WAS-H and has many friends here, so when he retired as treasurer, he kept the job of bartender for our monthly receptions. He's the one who pours the wine and will not allow anyone to have more than two glasses. We like him a lot and appreciate what he does for us!

Pebeo Drawing Gum

Les McDonald, one of WAS-H's instructors, has always recommended Pebeo Drawing Gum for masking. During a recent purchase of Pebeo, Les found it was lighter in color, thinner, and harder to pull up and it took up about 80-90% off of his pencil underdrawing.

He contacted Pebeo and learned there are two formulas – the one he likes is darker and GREY in color and the other is lighter and blue in color. Here are additional insights on the two options:

1. The grey version is the traditional formula with natural latex. It is thicker, easier to pull up, and leaves the pencil underdrawing in place.

2. The blue version is a new low-odor formula with synthetic latex (no natural latex). It is harder to pull up, lighter in color and thus harder to see, and takes off a lot of the pencil underdrawing. (It is hypoallergenic, though, and hence better for children and adults with latex sensitivities.)

Keep in mind that using drawing gum – it is best used only for a few hours until the paint is dry or up to a maximum of a few days. It should not be left on for weeks or left in a hot car as it will harden and not lift off your watercolor paper.

Happy Painting!

Condolences

WAS-H extends condolences to the family of Watercolorist Helen Matrisciani, who painted under the name "Helenka." She passed away September 29, 2015. She was a charter member of WAS-H who participated in WAS-H's painting exhibit honoring charter and founding members in November 2010.

WAS-H November 2015 Gallery Exhibit and 40th Birthday Party

by Louise H. Bateman and Terry Baird, Gallery Co-Directors



First place was awarded to **Richard Linden** for *On the Beach*.



The second place winner was awarded to **Cuauhtemoc Murphy** with *The Art of Looking at Art*.

Honorable Mentions included:

- Erik T. Sprohge - *Sky and Earth Dance*
- Liz Hill - *Morning After*
- Daniela Werneck - *Whatever*
- Elizabeth Wagar - *Apples to Apples*
- Alonzo (ZoZo) Garcia - *Wrenches*
- Tamara Kontrimas - *Boxed Bracelet*
- Monika Pate - *Happy Hour*
- David Connolly - *Trondheim*
- Mohammad Ali Bhatti - *Homeless*
- Irene Sheytman - *White Village*

The WAS-H November Gallery Exhibit and 40th Birthday Party was a smashing success. WAS-H received 89 entries, painted by 54 artists for the Gallery Show. The theme was "General", which resulted in an exciting array of different paintings. We were delighted to have Patrick Palmer, Dean and Studio School Faculty Chair and Department Head of Art History at the Glassell School of Art as our November juror. Patrick graduated from the University of California and has a Master's Degree from Arizona State University. Earlier in his career, he served as an instructor at the University of St. Thomas and the Houston Art League. His art is included in many public collections and has been featured in many exhibitions.

Patrick commented on the high quality of the paintings entered, making it extremely difficult to pick winners. In fact, he lobbied the Gallery Co-Directors to expand the number of honorable mentions!



Third place went to **Margit Gergely** *First Day of School*.

11 December 2015-January 2016

WAS-H Founders, Signature, and Elite Signature Members honored at 40th Birthday Party



Founding Members: Back row- A J Schexnayder, Eldon Faries Front row- Margaret Bock, Mary Wilbanks, Mary Rustay, Susan Giannantonio



Signature and Elite Signature Members: Back row- Eldon Faries, A J Schexnayder. Front row- Anna Griffith, Reva Powers, Susan Giannantonio, Eric Sprohge.



Signature and Elite Signature Members: Back row- Mark Stewart, Linda Jarnagin, Brandee Standley, William Owens. Front row- Rosemary Massey, Margaret Bock, Mary Wilbanks.

(continued from page 6)

from July 30 through August 28, 2016.

Opening on December 5, 2015, is a group show at Cassidy Bayou Art and Culture center in Sumner, Mississippi. Ten of Laurin's watercolors will be displayed in this show.

Finally, Laurin recently participated in the group show "Harvest" at

12 December 2015-January 2016

Greenberg Gallery in Santa Fe that ran from October 16 to 29, 2015. Laurin had three paintings in the show: *Still Life with Chocolate Server*, *Apple Pears Lemon Bag*, and *Eggplants and Mixing Bowls*. The latter was featured in a review of the show in American Art Collector's October 2015 publication.

After the awards ceremony Beverly Aderholt, President, honored the founding members of WAS-H, and noting that their vision 40 years ago, enabled us to become the vibrant organization we are today. Also honored at the celebration were the Signature/Elite members who have reached a level of excellence by being selected for participation in the WAS-H International Exhibition for multiple exhibition years.

A special thanks to the volunteers and guests who made our WAS-H November Gallery Reception and 40th birthday celebration a huge success. We had 15 plus members volunteer for the "Take-In" and "Hanging" of the show. We could not have hung 151 paintings without you. A special thanks and shout out to Terry Baird, Gallery Co-Director who designed decorations and the scrumptious cake.

New Members

Helen Anderson	Debra Pogue
Carol Carranza	Argelia Ramirez
David Connolly	Marilyn Roane
Emily Dunbar	Lea Roberts
Pamela Kelley	Linda Ann Stelljes
Soomin Leem	Michael Verinder
Bean Noneya	Kim Whitton

2016 International Exhibition - Important Dates to Remember!

by Dawna Hasara, International Exhibition Director

After viewing and participating in this years' outstanding annual member's exhibition, I'm looking forward to having the opportunity to be involved in our next major show, the 2016 International Exhibition. As you work on your paintings for this show, please keep the following information in mind:

- Prearranged one-on-one workshops can be reserved for 45-minute segments starting at 10:30 am on Thursdays, December 10 and 17, by contacting me at dawna.hasara@gmail.com or 832-702-9495 to arrange your time slot. Most artists find the CaFÉ system very easy to use once they've gone through the training and by using the tutorials posted on the IE page of the WAS-H website. The workshops are intended for WAS-H members who don't have access to a computer or who have problems using computers.
- Local professional photographer Rick Wells is a great resource for WAS-H members to use to create their high-resolution digital images for uploading to CaFÉ. His fee to photograph and supply a suitable digital file is \$8.50 per image. You can find Rick's studio at 3114 Houston Avenue, by phone: 713-298-3542, or by email: rick_camera@yahoo.com.

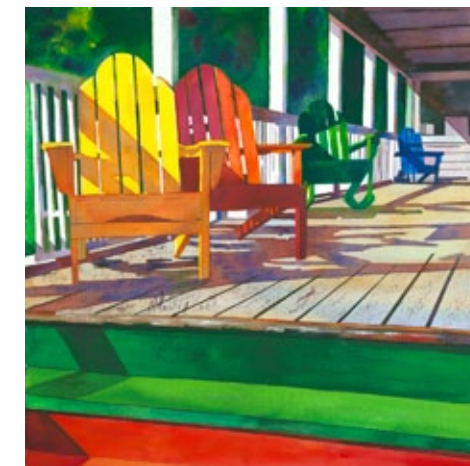
The Prospectus and links to CaFÉ and CaFÉ tutorials are available on the WAS-H website. Any questions regarding the exhibition submission process can be sent to washoustonitl@gmail.com or by calling the gallery and leaving a message for Dawna Hasara (2016 International Exhibition Director). The complete 2016 IE calendar is below – we're looking forward to another successful and beautiful exhibition this year!

Friday, January 15, 2016,
Thursday, March 3, 2016

Deadline for entry submission to CaFÉ 11:59 pm CST
Accepted entries must be received at the WAS-H gallery by 3 pm CST.

Tuesday, March 8, 2016
Thursday, March 31, 2016
Friday, April 1, 2016

Opening of Exhibition to the public
Final day of Exhibition
Exhibition is closed and paintings are prepared for return to artists; no artwork can be picked up or shipped prior to 10 am, Friday, April 1, 2016.



Pawlys Island by Anne Abgott

finished and the skills to finish it.

Anne does more than teach painting — she shares it all: photography, setting up still lifes, making greeting cards, etc.

Workshop Cost: \$525 (\$25 discount if paid in full by 1/25/16)

For more info and to sign up, go to the WAS-H website, watercolorhouston.org

Anne workshop coming

Anne Abgott, NWS

by Lynne Woods, Vice President

"Daring Color"

Major 5-Day Workshop. March 7-11, 2016



#13 Tulip (Yellow-Orange Tulips) by Anne Abgott

Anne Abgott is a Signature Member of the National Watercolor Society and the author of the book *Daring Color*. She is a member and past president of the Florida Watercolor Society, as well as a member of the Niagara Frontier Watercolor Society and the Philadelphia Watercolor Society.

In her workshop, Anne teaches four different images, one each day, leaving the last day for finishing the paintings. She provides her images ahead of time, covering diverse subject matter from glass to wood to metal. Students are also encouraged to bring their own like images.

Anne will show her techniques of mingling colors on paper, getting in and out with no glazing. She will also demonstrate using gold gesso to obtain a uniquely textured background. Anne uses her camera and family mementos to create still lifes that are full of emotion and meaning.

Each day Anne paints along with the students, demonstrating her techniques for mingling colors with little to no glazing. All elements of each painting will be covered. Students can expect to go home every day with a painting almost

(continued on column 2)

13 December 2015-January 2016

January Gallery Exhibit

Take-In: Sat., January 9, 10:00 am – 12:00 pm

(Paintings can be brought in before Saturday.)

Questions: Louise Bateman, lousehbateman54@gmail.com or 713 703 6889; or Terry Baird at 713-289-9662.

Theme - Abstract

Reception: Friday, Jan. 15, 6:00 pm – 8:00 pm

Pick up Paintings: Fri., Feb. 4, 10:00 am – 3:00 pm

Juror: Armando Rodriguez was born in Mexico and moved to the U.S. as a child. He received a BFA in Printmaking from the University of Houston in 1982. He works in many media including photography, printmaking (etching, lithography, and monotype), graphic design and bookmaking. In addition to teaching at Art League, Houston, he also works for the Houston Chronicle and in the education department of the Museum of Fine Arts Houston.

Eligibility and Requirements:

- Artist must be a current WAS-H member.
- Up to 3 entries per artist.
- Fee of \$10 per entry.
- Artwork Regulations:
 - Only original artwork accepted. May not be a likeness of another's work, (i.e. painting, drawing, photograph-digital image or print).
 - Completed in the last 24 months.
 - Not painted under supervision or in a class.
 - At least 80% watermedia.
 - Surfaces: paper, clayboard, or Yupo only.
 - Has not won a WAS-H award or been in International or Annual Member's Exhibits.
- Framing Regulations:
 - Artwork must be framed (only exception is clayboard wooden cradle panels).
 - Frames must be plain, simple grooves only.
 - White or off-white mats and liners.
 - Frame width must not exceed 2".
 - Must be strung with wire for hanging.
 - Plexiglas, if glass is needed.
 - Paintings not to exceed 48" in height or width, frame included.

Awards

- Cash Awards for 1st - \$100 / 2nd - \$75 / 3rd - \$50.
- Honorable Mentions awarded a ribbon – no cash.
- Only one award per artist.
- Winners are notified by phone.

Sales

- WAS-H accepts a 20% donation for sale of artwork.
- Artwork must remain in gallery for duration of the show.
- Price does not include sales tax, which will be added at time of sale.
- A 5% fee is taken out of credit card sales.
- All sales include frames.

Liability

WAS-H will not be liable for damage before, during, or after the exhibit. Artwork must: adhere to these guidelines, be appropriate for a family venue, and be acceptable to the juror.

Abbreviations

Medium: WC-Watercolor, A-Acrylic, G-Gouache
Surface: P-Paper, YP-Yupo, CB-clayboard

February Gallery Exhibit

Take-In: Sat., February 6, 10:00 am – 12:00 pm

(Paintings can be brought in before Saturday.)

Questions: Louise Bateman, lousehbateman54@gmail.com or 713 703 6889; or Terry Baird at 713-289-9662.

Theme - Texas

Reception: Friday, Feb. 12, 6:00 pm – 8:00 pm

Pick up Paintings: Fri., Mar. 4, 10:00 am – 3:00 pm

Juror: Mary Glover Rustay, a native and lifelong Texan, holds a BS degree in Fine Arts from Austin College and is a charter member of WAS-H. She has served on the WAS-H board of directors in many capacities, including President 1979-1980. Since 1986 she has taught the Senior Class, which is so popular it has a waiting list. Many of her paintings are in private collections across the United States and abroad, as well as being accepted into the WAS-H International and Membership shows. She is also a full-time realtor, and loves to spend time with her family, especially her four grandchildren.

Eligibility and Requirements:

- Artist must be a current WAS-H member.
- Up to 3 entries per artist.
- Fee of \$10 per entry.
- Artwork Regulations:
 - Only original artwork accepted. May not be a likeness of another's work, (i.e. painting, drawing, photograph-digital image or print).
 - Completed in the last 24 months.
 - Not painted under supervision or in a class.
 - At least 80% watermedia.
 - Surfaces: paper, clayboard, or Yupo only.
 - Has not won a WAS-H award or been in International or Annual Member's Exhibits.
- Framing Regulations:
 - Artwork must be framed (only exception is clayboard wooden cradle panels).
 - Frames must be plain, simple grooves only.
 - White or off-white mats and liners.
 - Frame width must not exceed 2".
 - Must be strung with wire for hanging.
 - Plexiglas, if glass is needed.
 - Paintings not to exceed 48" in height or width, frame included.

Awards

- Cash Awards for 1st - \$100 / 2nd - \$75 / 3rd - \$50.
- Honorable Mentions awarded a ribbon – no cash.
- Only one award per artist.
- Winners are notified by phone.

Sales

- WAS-H accepts a 20% donation for sale of artwork.
- Artwork must remain in gallery for duration of the show.
- Price does not include sales tax, which will be added at time of sale.
- A 5% fee is taken out of credit card sales.
- All sales include frames.

Liability

WAS-H will not be liable for damage before, during, or after the exhibit. Artwork must: adhere to these guidelines, be appropriate for a family venue, and be acceptable to the juror.

Abbreviations

Medium: WC-Watercolor, A-Acrylic, G-Gouache
Surface: P-Paper, YP-Yupo, CB-clayboard

Name _____

Email _____

Tel. (H) _____ (C) _____

Title #1 _____

Price _____ Medium _____ Surface _____

Title #2 _____

Price _____ Medium _____ Surface _____

Title #3 _____

Price _____ Medium _____ Surface _____

I grant WAS-H permission to reproduce the artwork for publicity, documentary, or educational purposes. I accept the terms of the prospectus and confirm that the artwork meets the stated regulations.

Signature _____ Date _____

Attach this label or a facsimile to the back of each painting.

Name _____

Tel. _____ Price _____

Title _____

Framed Size _____x_____ Medium _____ Surface _____

Name _____

Tel. _____ Price _____

Title _____

Framed Size _____x_____ Medium _____ Surface _____

Name _____

Tel. _____ Price _____

Title _____

Framed Size _____x_____ Medium _____ Surface _____

Name _____

Email _____

Tel. (H) _____ (C) _____

Title #1 _____

Price _____ Medium _____ Surface _____

Title #2 _____

Price _____ Medium _____ Surface _____

Title #3 _____

Price _____ Medium _____ Surface _____

I grant WAS-H permission to reproduce the artwork for publicity, documentary, or educational purposes. I accept the terms of the prospectus and confirm that the artwork meets the stated regulations.

Signature _____ Date _____

Attach this label or a facsimile to the back of each painting.

Name _____

Tel. _____ Price _____

Title _____

Framed Size _____x_____ Medium _____ Surface _____

Name _____

Tel. _____ Price _____

Title _____

Framed Size _____x_____ Medium _____ Surface _____

Name _____

Tel. _____ Price _____

Title _____

Framed Size _____x_____ Medium _____ Surface _____



A monthly publication of the

Watercolor Art Society - Houston

1601 W. Alabama at Mandell, Houston, TX 77006

713•942•9966 • www.watercolorhouston.org

NON PROFIT
ORGANIZATION
U. S. POSTAGE
PAID
HOUSTON, TEXAS
PERMIT NO. 2169

**We Offer a 20% DISCOUNT
To All WAS-H Members!**

ART
SUPPLY
ON MAIN

2711 Main St.
Houston, TX
77002

If you need
more directions
Please call

ART SUPPLY
(713) 652-5028



email vikki: artsuply@swbell.net

Quality Giclee Printing & Custom Framing



Canon iPF6400 Giclee 24" Printer

- ☺ Top quality Arches Paper
- ☺ Color Corrections with CS5 Photoshop
- ☺ No Minimum Order

Full Service Frame Shop

- ☺ Top quality Custom Frames and Mats
- ☺ 20% WAS-H Member Discount
- ☺ No Minimum Order

By Appointment Only - Call

Les McDonald, Jr.

2623 Stoney Brook Drive • Houston, TX 77063

(713) 977-4729