

September 2018

Washrag NEWSLETTER Watercolor Art Society - Houston

August Gallery Exhibit



1st place - Glow by Karen Lindeman

By Helen Lim, WAS-H gallery director

True to the spirit of the August Exhibit theme of “Heat Wave”, the Houston weather continued to deliver scorching temperatures this summer. We had a lively group of artists and art lovers who were happy to be out of the heat and in our gallery for the reception and awards presentation on Sunday, August 5. Our juror Cookie Wells was delighted to see the vibrant colors that resonated throughout the collection. Wells chose Karen Lindeman’s “Glow” for the first place award. Wells said she saw beauty in the simplicity of that piece. She said the painting glows when viewed from a distance, and she could actually feel

the atmosphere and the heat. For second place, “Facing the Wind” by Linda Jarnagin was Wells’ choice. Wells commented on how well the colors worked together throughout the painting, and she particularly loved the texture in the foreground. For third place, Wells selected “Life on the Red Planet” by Margrit Gergely. Wells was impressed with the use of complementary colors in such a whimsical way. She said the color choices won her over, and the piece was cleverly done. A huge thank you to all the WAS-H artists who participated in this show and to all the volunteers who made this weekend a success. Happy Painting!

Winners:

1st place - Glow by Karen Lindeman

2nd place - Facing the Wind by Linda Jarnagin



3rd place - Life on the Red Planet by Margrit Gergely



2nd place - Facing the Wind by Linda Jarnagin

3rd place - Life on the Red Planet by Margrit Gergely

Honorable Mention received:

Fire and Ice by Sarah Kitagawa

Heatwave in Provence by Irene Sheytman

Hot Lava by Fontaine Jacobs

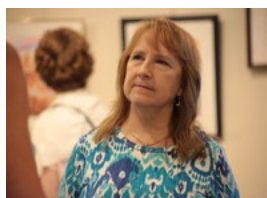
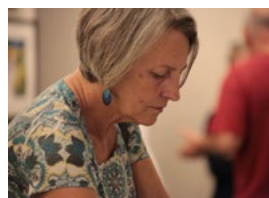
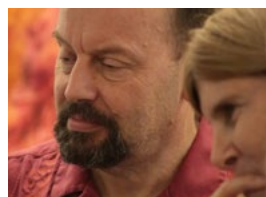
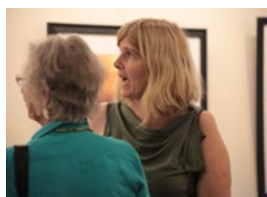
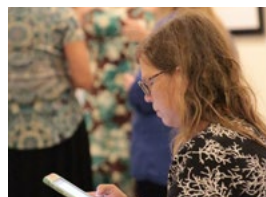
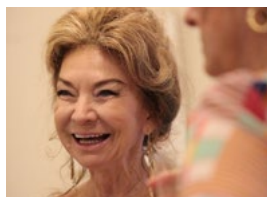
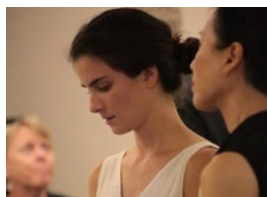
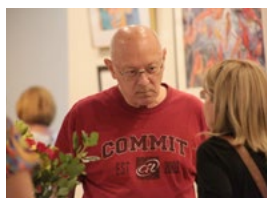
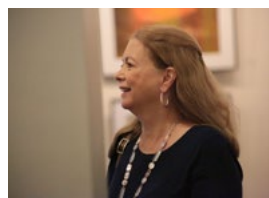
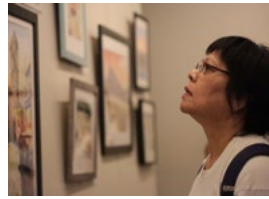
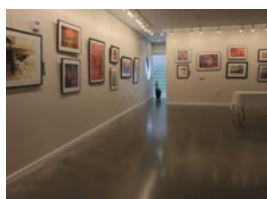
Navasota Sunday by William Tone

Rainbow Hat by Cindy Wigglesworth

Silas at Work by Jan Shrader

Taquila by Ruby E. Allen

August Reception



September Demo

by Kathleen Church, WAS-H Vice President

Past President and WAS-H friend Gerry Finch will be our guest juror and demo presenter in at the September general meeting. Gerry will demonstrate her process of creating abstract art. This will be a terrific way to “prime the pump” for her October Paint-In. Please join us on **September 9, 2018** for our General Meeting. Our social begins at 1:30 p. m., the meeting starts at 2:00, and Gerry will begin the demo at 2:15 p. m. Following the demo, at 3:30 p. m., we will move to the Gallery for the awards presentation and reception for the September Monthly Exhibit.

Watercolor Art Society - Houston | Gallery and office location and hours:

1601 W. Alabama at Mandell
Open Tuesday – Saturday
10:00am – 3:00pm
For information, please
contact:
Martin Butler, Administrative
Assistant **713-942-9966**
[www. watercolorhouston. org](http://www.watercolorhouston.org)
email: **admin@**
watercolorhouston. org

Wednesday Model Session



The Wednesday Model Session group will continue to meet every Wednesday, 12:30pm – 3:30pm (unless there is a workshop scheduled) at WAS-H. Please email Carol Rensink at the address below to find out the name of the model each week before the session. Come with your drawing and painting gear and do your own thing for three quiet hours of model time. It is a wonderful opportunity.

Monitor: **Carol Rensink**, 713-299-4136 or **wedwash@gmail.com**

Member Teachers Listing

Sallie Anderson Studio, 409-763-2265
Sallie Anderson Fine Arts.com
Galveston

Susan Giannantonio, Katy, TX &
Mayville, NY lucholiz@gmail.com,
[www. susangiannantonio. com](http://www.susangiannantonio.com)

Gay Paratore, BA, MEd, NWS, NSA, TWS,
WASH, 409-316-1005, [NSArtists. org](http://NSArtists.org).
Butler/Woodlawn Museums & Studio

Ksenia Annis, figure sketching, digital
art, ksenia@tummyrubb.com
[www. tummyrubb. com](http://www.tummyrubb.com)

Caroline Graham, WAS-H,
713-664-6589, Museum District,
cgrahamart@hotmail.com

Carol Rensink, WAS-H
Figure Drawing & Anatomy
713-299-4136, crensink.att.net

Robin Avery 713-410-1075
NW, Tomball, Champions,
robinaveryartist.com, [Robinavery47@](mailto:Robinavery47@gmail.com)
gmail.com

Janet Hassinger, 409-457-4527,
Galveston www.janethassinger.com

Robert Ruhmann, Watercolor
Landscapes 979-864-0155
raruhmann@gmail.com

Peihong Endris, WAS-H, 713-206-3668
Chinese Brush Painting
Peihong1512@gmail.com

Liz Hill, WAS-H, 713-252-7726,
Mixed Media, lizhill4u@aol.com

Mary Rustay, WAS-H, Watercolor
for Seniors 713-703-1533 [rustay@](mailto:rustay@heritagetexas.com)
heritagetexas.com

Carla Gauthier, NWS, 281-384-2473,
League City, carla.gauthier@yahoo.com

Joanie Hughes, WAS-H. Beginner
Watercolor; 713-426-6767; [joan-](mailto:joan-hughes@comcast.net)
hughes@comcast.net

Mary Wilbanks, NWS, WHS, WAS-H
Workshops & Critiques, 281-370-7879
marywilbanks@gmail.com

Celebrating New WAS-H Members of July 2018

Elnaz Afousi
Patricia Allen
Linda Allison
Ann Broome

Ana Cyrielle Ceron Juarez
Rebekah Cherry Owen

Elizabeth Dean
Xiaohong Dou
Coralanne Hocking
John Holmes
Chris Hooks
Cynthia Kethley

Saranya Lakshmikanthan
Siripoom McKay
Miki Milovanovic
Amy Nasto
Dori Nelson
Martha Philipp

Susan G. Reyes
Laurie Silver
Stacey Summers

Donate to WAS-H

Randall's offers 1% of your purchase with their Good Neighbor Program. Register at the courtesy booth with WAS-H's ID #4553. Every time you use your Randall's Remarkable Card, WAS-H will receive a credit.

Amazon donates \$. 05 to WAS-H for every \$10 you spend! When shopping online, click [https://smile. amazon. com/](https://smile.amazon.com/)

We Offer a 20% DISCOUNT To All WAS-H Members!

art

**SUPPLY
ON MAIN**

**2711 Main St.
Houston, TX
77002**

If you need
more directions
Please call

**ART SUPPLY
(713) 652-5028**

email vikki: artsuply@swbell.net



Become Our Sponsor

We invite WAS-H members, friends, businesses, teachers and organizations the opportunity to offer your talent or service to 800+ WAS-H members. Our newsletter comes out 10 times a year - your ad could be in it with interactive links to your website!

Please contact via email:

washrag@watercolorhouston.org

and

beverlyaderholt@att.net

Sponsorship rates:

Full page - \$75/issue

Half page - \$50/issue

Quarter page - \$25/issue

1/8 page - \$15/issue

Teachers listing \$25/year (due September 1st)

Submit Your Article

Did you go on an interesting trip, see a great exhibition, participate in a workshop or class? Please share your experience with Washrag readers!

Do you have an art related question? Would you like to learn more about a certain technique or material? Your art questions will be answered by WAS-H teachers and signature members.

Submit your letters and articles via email only to
washrag@watercolorhouston.org.

Deadline for members to submit articles for the
upcoming issue of Washrag is
the 15th of the previous month.

Material not received by the deadline will appear in
the next month's Washrag.





From the President

Dear WAS-H Members and Friends,

As I write this note, I am at Newark waiting on a delayed flight to Portland, Maine. From the Portland Airport, I'll be driving up the Maine coast to spend a week at a little B&B, enjoying cool air, ocean views and peaceful settings while adding pages to my journal and sketchbooks in the unique light on that rocky Atlantic coast. I know many of you have been creating your own Memories of Summer in Colorado, the Pacific Northwest, West Coast, Midwest, East Coast and beyond—as well as right here in Houston and the Gulf Coast. I look forward to seeing all of the wonderful art you will enter in our September Exhibit, “Memories of Summer”. The quality of art in our Gallery seems to get better and better with each new monthly exhibit! I just love seeing all of your work!

Louise Bateman, Past President, **Kathleen Church**, Vice President, and I have reviewed both preliminary results of the survey that many of you completed in July as well as a more detailed report. The survey results are fairly consistent with the results of the April 2018 General Meeting exercise that we did, facilitated by member **Cindy Wigglesworth**, with responders being focused primarily on: classes and workshops; visibility and foot traffic at the Gallery; and parking. We are beginning our meetings to discuss how to use these results in future planning efforts for WAS-H.

Our Fall Class lineup is exciting and several of our classes “sold out” within the first few hours or days. If you haven't looked at the schedule, please do. We have a lot of variety to offer. Also, look for our January 2019 workshops with Michael Holter the week of January 14th. We're trying something a little different in response to survey results requesting more workshops from artists outside of Houston. The week will be split into a two-day and a three-day workshop: one will focus on portraits, the other on landscapes. Michael is a wonderful artist and lives in Plano, Texas. You may remember his painting, “Pigeon Roost”, which won an award in the most recent WAS-H IWE. He is a signature member of The National Watercolor Society, The Transparent Watercolor Society of America, The Outdoor Painter Society, the Southwestern Watercolor Society and The Society of Watercolor Artists. He is also a member of the American Watercolor Society, the Portrait Society of America and the American Impressionist Society. **Go to our website** for more information about the workshops and Michael. It will be a fabulous way to start off 2019 in watercolor.

As I mentioned last month, we continue to work on ways to increase visibility of WAS-H in the community and to increase the number of visitors to our gallery. We have a robust advertising plan, including several in the digital arena. You, too, can invite your art loving friends and colleagues to our monthly and major exhibits.

If you have time to volunteer at WAS-H, please consider doing so, even if it is only an hour or two from time to time. In addition to take-ins and receptions, WAS-H volunteers spend untold hours to keep WAS-H running. As just one example, it takes weeks for our Education Director to seek out instructors and class ideas, work on the complex logistics of working out a schedule, follow up with instructors for information and supply lists, enter it all onto our website, write the articles for our newsletter and emails, train the monitors, set up the notices for students who register for the classes, etc. - for just one semester. Many of our directors, officers and other volunteers have responsibilities that are the equivalent of part time jobs or more. Our dues structure is based on just this type of volunteer organization. We have very minimal part-time staff to keep the dues structure as low as it is. Let any of us know if you have time to volunteer at WAS-H and the area for which you feel you are best suited. Many thanks.

I hope to see you at the September General Meeting and Reception on Sunday, the 9th (**note that it is the second Sunday due to Labor Day**). As always, I welcome your thoughts and suggestions when I am at WAS-H or by email at president@watercolorhouston.org.

Best,

Laura McMahon
WAS-H President

2018 Annual Members Exhibit

by Karen Capper, AME director

It's not too early to be thinking about the 49th Annual Member Exhibit (AME) scheduled for October 7th this year. As in years past this will be an exciting, highly anticipated event for our members. And this year's AME will award over \$3000 in cash and merchandise.

Internationally renowned artist Carl Dalio will be the judge for this year's AME. Dalio grew up in NW Houston where he began spending time observing life, depositing forms and colors into his "visual file." A master of bold color and dynamic design, he has abundant experience as a successful artist, illustrator, instructor, and juror. A six-times publication cover artist, he is a signature member of the American Watercolor Society and the National Watercolor Society and has authored numerous published articles and books. With his reputation as a well-known teacher and highly sought-after instructor, we are eagerly looking forward to all he will share with us as our 49th AME juror and presenter.

We hope you are already planning, reading through the Prospectus to review specifications for your work, and painting your entries!

SAVE THE DATES!

Mark your calendars with the following dates for the 49th Annual Members Exhibit:

- Thursday, **October 4 and Friday, October 5**: Entries will be accepted from 10 am-3pm.

Note: There will NOT be a Saturday drop-off for entries. Artists are welcome to follow the early drop-off procedures to submit entries prior to October 5. (Early drop-off procedures are posted in the WAS-H gallery.)

- Sunday, **October 7**: Carl Dalio will give a presentation at the WAS-H Monthly Members Meeting.
- Sunday, **October 7**: The AME Reception and Awards Presentation will immediately follow the Monthly Members Meeting.

• **October 7 - November 2**: The Annual Members Exhibit will be available for viewing in the WAS-H Gallery during regular gallery hours.

If you have questions, contact Karen Capper, AME Director at 832-277-4688 or ame@watercolorhouston.org



Linda Jung "Rust Bucket" (detail)



Mohammad Bhatti "Sunset"



Jan Shrader "Calling Uber"

October Demo

by Kathleen Church, WAS-H Vice President

Carl Dalio, juror for the 49th AME will be the demo artist at the October general meeting on Sunday, **October 7**. In keeping with the theme of 'Painting Outside the Box of Your Photos', Carl will do a watercolor demo from one of his photos stressing composition, drawing, editing, shape simplification, values and color expression. Social begins at **1:30 p. m.**, the meeting starts at **2:00 p. m.**, and Carl will begin the demo at **2:15 p. m.** Carl's presentation will be followed by AME awards presentation and reception at the gallery downstairs. We hope to see you all there!

Sign Up for September Classes!

by Laurie Hammons, Education Director

It is not too late to sign up for a class in September! Beginners are welcome at all these classes!



PORTRAIT DRAWING - Prof. Mohammad Ali Bhatti

Tuesday afternoons, September 4- 25

This class is designed to learn basic drawing study of human head, proportion of eyes, nose, mouth, neck and shoulders. You will learn the basic drawing skills and techniques with a variety of drawing media. This class is very useful for all artists who are interested in painting portraits.

<https://watercolorhouston.org/event-2995118>

AWE-INSPIRING TEXAS LANDSCAPES - Robert Ruhmann

Tuesday evenings, September 4-25

For beginners and intermediate painters. Have you ever wished you could capture the beauty of the Texas countryside? Bring your photographs of favorite landscapes: pastures, barns, rivers, seascapes, hills, rocks, etc. These can be used to plan compositions that will showcase your appreciation for the natural world. (Landscapes from outside Texas also welcomed.)

<https://watercolorhouston.org/event-3006552>



SUNDAY ART JAM: DRAWING AND PAINTING ON IPAD - Ksenia Annis

Sunday, September 16

Put your iPad to work creating beautiful art. Ksenia Annis will be teaching the basics of digital drawing and painting using an iPad and Apple Pencil. She will give an overview of Procreate software and show how various pieces - from quick sketches to finished paintings can be created digitally. All levels. <https://watercolorhouston.org/event-2894687>



CHINESE BRUSH PAINTING - THE PINE TREE - Peihong Endris

Friday, Saturday, and Sunday - September 21- 23

The pine tree is a favorite subject in Chinese landscape painting. In this workshop you will learn the power of brush work to depict the ideas on oriental rice paper. Peihong gives hands-on, step-by-step demonstration for each student's work. All skill levels are welcome.

<https://watercolorhouston.org/event-2996651>

Updated Class Cancellation Policy

- Full payment of registration fee for regular workshops and classes must be made at time of registration for the regular workshop or class.
- Cancellation of registration for any workshop or class must be in writing and sent to admin@watercolorhouston.org.
- Registration fee for a regular workshop or class is eligible for refund if cancellation is made in accordance with this policy three weeks or more prior to first day of workshop or class.

October 2018 Major Workshop with Carl Dalio



There are still just a few openings for Carl Dalio's Major Workshop at WAS-H, October 8 through 12, 2018. Make sure you register before they fill up. Carl Dalio has abundant experience as a successful artist and conducts workshops across the United States and internationally. Go to <https://watercolorhouston.org/event-2854026>.

October Paint-In

by Jan McNeill – Paint-in Coordinator

Nonobjective Abstract Painting & Creativity with Gerry Finch

Saturday October 20, 2018 9:30-3:00

Gerry Finch is a past president of WAS-H and an Elite Signature member. She is also a Signature member of the National Watercolor Society. She has taught watercolor classes and workshops throughout the Houston area for more than 25 years.

For this paint-in Gerry will be teaching creativity and abstract watercolor on Yupo. Bring 4 pieces of 10"×13" of Yupo paper as well as your normal watercolor supplies. If you are unable to obtain Yupo, Gerry will have some available for a small fee. No drawing is required. Just prepare to have fun! To register, go to <https://watercolorhouston.org/event-2905974>



Senior Class: Adventures in Watercolor

WAS-H offers a **Senior Class: Adventures in Watercolor** most Thursday mornings from 9:00 a. m. to 12:00 p. m. as a community outreach program. It is free to seniors 55 and older and is taught by **Mary Glover Rustay**, who started this class in 1986.

Senior Class: Adventures in Watercolor will begin this fall on **Thursday, September 6, 2018**, the first Thursday after Labor Day. Please note the new time this year for Senior Class—9:00 a. m. to 12:00 p. m.! This class is for all levels of experience, and the class welcomes new faces as well as long-time participants. Every effort should be made to be regular in your attendance, as space in the class is coveted. We will send you a list of supplies to purchase and bring to class—the list is also on the WAS-H website. You will learn techniques, design, use of color and values, all of which make a painting successful. We also will talk about how to control your watercolors.

If you are interested in participating, and did not register last spring or over the summer, please register or add your name to the wait list on our website - <https://watercolorhouston.org/event-2968906>. If you have questions or want additional information, you may call Mary at 713-703-1533 (cell) or at her work number: 713-341-1668 (regular business hours).

Condolences

We extend our condolences to the family of WAS-H member **Helena Byler**, who was born December 1, 1938 and passed away June 6, 2018.

We are sending our thoughts and prayers to family and friends of WAS-H member **Jerry Wray**, who passed away June 29, 2018.

Long time WASH member and award winning artist **Mabel Sellers** passed away on August 14, 2018. Let us remember to keep Mabel's family in our thoughts and prayers at this time. Mabel was an extremely creative artist, always wanting to explore new boundaries through innovation, the semi-abstract and collage. And she was one of the first WAS-H Signature Members, attaining Signature Elite status.

Fall Paint-Outs are Just Around the Corner

by Mary Glover Rustay, Paint-Out Director

Hi, all you plein air artist wannabes! Are you excited about returning to the beautiful Texas countryside and small towns and city sights and beautiful architecture, which are all around us inspiring us to create some amazing paintings in and around the Houston area and beyond? If so, you will have to wait a little longer until October, due to the intense sultry weather blanketing the Houston area the next few weeks. However... there is hope!

We usually feel a distinct change once we get into October. Watch for the upcoming October Washrag for the announcement re: the first Paint-Out of the fall. It will take place on **the 3rd Saturday of October - the 20th**. There will be a link provided to register on the WAS-H website.

I am looking for the perfect place to begin our 2018-2019 Paint-Out adventures. We hope to meet monthly and to include both local and out-of-town locations, day trips and some overnight trips! We welcome invitations to our members' and friends' country properties, or scenic little towns no more than an hour and a half drive from Houston. We've gone to Rockport, Chappell Hill, San Antonio, Nacogdoches, Huntsville, Galveston, New Orleans, Waller, Kemah, Bolivar, Surfside, Gulf Prairie, April Sound - just to name a few spots outside of Houston. We've painted at Rice University, Hermann Park, Memorial Park's Arboretum, Allen Parkway, the Houston skyline from the Sabine Street Bridge, the River Oaks Theater's historic marquis, the Airline farmer's market, the bandstand in the Heights, some of the Height's historic homes, Galveston's historic homes and the Galvez Hotel on its 100th anniversary, the Galveston marina, the tall ship Elyssa, the beach at Pirate's Beach, and skyscrapers from the rooftop of another Houston skyscraper. . . and on and on! The pleasure never ends.

Everyone is welcome to join in, mark your calendars now and get ready to paint! Get your gear ready. Throw away your inhibitions and spend a wonderful day of relaxation with your fellow artists. Put your painting cap on and be part of this fun WAS-H activity. Let me know of your interest and to expect you. I will watch for you and give you suggestions on what you need to bring – a chair, an easel or stool / table to paint on or place your palette on, a camera, sunscreen, sunglasses, and insect repellent, an umbrella, water, paint and paper and board with clips, a sketchbook, a rolling basket for your gear, etc. You will learn what works best for you and will forget the rest! I hope you'll come along!

Beginnings

by Robin Avery, WAS-H signature member and teacher

With school starting and the excitement of new friends, new experiences and new challenges, I reflect back on my first days and months of learning to paint in watercolor. How addictive all those colors were! And when would I find that MAGIC brush? An art store was as exciting as a delicious pastry or ice cream shop! But where to start?

I enrolled in a local community center art class, a college community class and the Art League of Houston. After about a year or so I was told about the Watercolor Art Society of Houston. At that time we were in the present location but in a small framed house. I took a leap of faith and visited Was-H. Immediately with Martin's warm greeting I felt at home. I made many friends and was introduced to all styles and approaches to water media painting. We were a small group back then. Just a few tables upstairs and the workshop was full! I took advantage of all the Saturday paint-ins and signed up for various workshops. Each time meeting someone new and learning something different.

So whether you are a newbie or not, September is a new beginning. Sign up for a beginner academy class or workshop. Sign out an art book from our large and amazing library. Come to the Wine Wednesday event. Go out and try painting in a style that will force you out of your comfort zone. We as a city have in our midst a jewel like no other city in the country. Thanks to many past and present members, Watercolor Art Society is a place for wonderful new beginnings and new opportunities to create, to learn and to develop your particular style of painting. See ya soon!

Art on "The Go"

by Shirl Riccetti, WAS-H member
Can It Be Done?



Because of last minute health issues, I packed a fold-up cane in my carry-on for a 17-day family trip to Italy. It was a "just-in-case" decision, which turned into a daily necessity. This trip took over a year of web research, keeping in mind that there were 12 of us (ages 10 to 82 yrs).

I had scheduled wheelchairs at all airports on our 15-hour arrival into Rome. After that long trip, my joints revolted, but two days in a Rome hotel (and my first time ever to order room service), I was wobble-hobble ready. We rented three cars for our adventure. We had a picturesque villa in St. Enea's, outside of Perugia. We toured Perugia, which has escalators, then

took a short cave walk. The surface is fairly flat and there are railings.

Assisi was another true challenge. Even though I had been there twice before, I had forgotten that nothing but the Basilica has a flat surface. Undeterred, I taxied. After absorbing the art and peacefulness of the Basilica, we ate in a three-generation family restaurant, then back to the parking lot to wait for taxi and sketch.

Parma is a walking town. We stayed in the historic center, with easy access to museum, churches, music. The duomo is outstandingly painted in tromp l'oeil. Google's definition: "realistic imagery to create optical illusion". Walls and pillars are breathtaking. Parma gives you a smile, because music is common. There are even pianos on some corners for the passerby who has the urge to sit down to play a few tunes. A sign asks for a donation, but I saw no one actually drop coins in. A large symphonic band played outside near the piazza.

A train ride to Modena added more towns to our full itinerary. Because we had cars, we were able to stop in smaller villages, so there were tales to share each evening since we all didn't go in the same direction. Being lost was a given, even with the latest technologies, Italian road signs are somewhat vague.

Then Venice again! This, at times, turned into a hilarious eye-opener. It was not easy to ascend to a small dock from a speed boat. Family hands held, pushed, pulled and shoved. I kept telling the boatman, "I can do this!" In Venice, we visited Peggy Guggenheim's Palacio, and my eyes opened to the freedom and airiness of abstract art. And, I sat on a duplicate of her white sofa.

The Academia was filled with Venetian art. Oh my, how did those 15 century artists paint so large? Each century the paintings became lighter and less dark. Every time a guard would leave his chair momentarily, I plopped down in it. Momentarily. We walked past art galleries, heavy on the abstracts and mixed media. I passed a shop filled with colored powdered paints, calligraphic papers, nibs, and other art supplies several times before stopping in.

It was my family's urging and strong elbows that allowed me to tackle this adventurous trip. Sitting on benches gave me time to sketch. I brought my usual zip-lock bag of supplies, but only used my pens and sketchbooks. Returned with an almost completely filled sketchbook of pen drawings, notes and food ideas.

An unforgettable moment came when I saw a woman walking down the four steps from the Guggenheim gift shop. She had a cane and braces on her leg and most importantly, a big smile on her face. When she looked at me, cane in hand, she said "We can't give up.... there is too much out there to see".

Carpe Diem
Shirl Riccetti



Frame for Fame

by Tom Kraycirik , IWE co-director

“Art is limitation,” G. K Chesterton wrote about art and creativity. “The essence of every picture is the frame.”

The Annual Members Exhibition will be upon us in a month and the 42nd International Watermedia Exhibition just beyond that. Many of us are just a few brush strokes away from that perfect painting to submit.

Then comes the frustrating chore of scurrying around to find a proper frame and exacting mat and then, cutting Plexiglas to fit.

In our rush to completion, many of us have overlooked a very valuable tool that has been right at our doorstep. One of WAS-H's own members has been offering framing services at very reasonable prices for years. Now that service has been expanded.

Les McDonald has been promoting his framing service for years to WAS-H members at discounted prices. Every Washrag issue features his ad.

As a WAS-H member and very well-respected and award-winning painter, he knows our exhibition requirements and the importance of making a professional presentation.

WAS-H members receive discounts from 20 percent to 40 percent off retail framing, he said, depending on frame selection, size and custom work. On average, routine work is performed at about 30 percent below retail pricing, he said.

This year, he will also be helping international artists in the IWE who wish to cut costs and time by mailing unframed paintings to be framed here. Last year, a firm that had offered to provide the service unexpectedly canceled. This caused some artists to drop the IWE from their list of participation. Les stepped up and has worked out a schedule for those international artists wishing this service.

All the services that Les will be offering can be best explained by visiting Les's website at: <http://lesmcdonald.com>.

At the time of this writing, Les said his website is days away from being updated to include images of moldings and framing prices. If the updated information is not on his website yet, he said he will email the images of materials and prices to those who call or send an email to him. His phone number is 713-977-4729.

He also said he can also negotiate re-framing to custom frames following the competition for those wanting to upgrade from simple exhibition frames.

Les grew up on the Texas Gulf Coast, surrounded by the rich subject matter of wildlife that this great locale has to offer. He received a BS degree in commercial art from Sam Houston State College in Huntsville and began a 19-year career as a commercial artist. In 1986, he became a full-time watercolor fine artist of wildlife, landscapes, seascapes as well as hunting, fishing and a variety of sporting art subjects. He also has conducted workshops at WAS-H on watercolor techniques to achieve realistic effects on a number of subjects.

In his Houston studio at 2623 Stoney Brook Drive, Houston, 77063, he offers full-service framing from simple framing, used for our exhibitions, to elaborate custom framing for office and home.

When not painting, framing or teaching, you will probably find him enjoying some of the greatest fishing opportunities in the country just a few hours away down the Texas Gulf Coast.

Quality Giclee Printing & Custom Framing



Canon iPF6400 Giclee 24" Printer

- ☺ Top quality Arches Paper
- ☺ Color Corrections with CS5 Photoshop
- ☺ No Minimum Order

Full Service Frame Shop

- ☺ Top quality Custom Frames and Mats
- ☺ 20% WAS-H Member Discount
- ☺ No Minimum Order

By Appointment Only - Call

Les McDonald, Jr.

2623 Stoney Brook Drive • Houston, TX 77063

(713) 977-4729

WAS-H Prospectus 49th Annual Members Exhibit 2018

Take-In: **Thursday-Friday, October 4 and 5, 10 a.m. to 3pm**
(Paintings may be brought in BEFORE October 5.

See procedures at WAS-H Gallery)

ENTRY CLOSSES AT 3 PM ON FRIDAY, OCTOBER 5.

Questions: Annual Members Exhibit Director:

Karen Capper, 832-277-4688, kcapper423@gmail.com.

Juror: Carl Dalio

Internationally renowned artist Carl Dalio will be the judge for this year's AME. A master of bold color and dynamic design, he has abundant experience as a successful artist, illustrator, instructor, and juror. A six-times publication cover artist, he is a signature member of the American Watercolor Society and the National Watercolor Society and has authored numerous published articles and books. With his reputation as a well-known teacher and highly sought-after instructor, we are eagerly looking forward to all he will share with us as our 49th AME juror and presenter. Please visit his work at www.carldalio.com.

Eligibility and Requirements:

Artist must be a current WAS-H member.

- Up to three entries per artist.
- Fee of \$25 per entry, or 2 for \$40 or 3 for \$50 (one painting per artist might be exhibited).

Artwork Regulations:

■ *Water soluble media*

At least 80% water media: watercolor, acrylic, gouache, egg tempera, casein, ink. NO water miscible oil.

■ *Completion date*

Artwork must be completed within the last 24 months.

■ *Surfaces*

Paper, Yupo, Claybord or Gessobord (with or without cradle), paper based board (illustration or art board). Canvas is NOT accepted.

■ *Originality*

- Photo references allowed:
 - must be artist's original source material and NOT derived from any published references or from photographs NOT taken by artist
- NOT painted from another's painting
- NOT painted under supervision or from teaching DVD or book
- NOT accepted in any previous AME or IE exhibit,
- NOT repainted from winning image
- Only original artwork (no giclees, copies, etc.)

• *Collage:*

- Allowed as long as water media is the dominant element
- All collage materials MUST be original designs executed on water media paper.

■ *Enhancement Media*

Less than 20% watercolor pencils, pastels, wax accents/resists charcoal, graphite, metallic water based paint, water based iridescent paints.

■ *Pricing*

- Paintings will have sales tax added at time of sale.
- Can be for sale or NFS (not for sale).
- Gallery commission of 20% and 5% charge for credit card sales.
- All sales include frames.
- Pricing can't be changed after submission.

■ *Matting and Framing Regulations*

- Must be framed. Only exception is Claybord or Gessobord wood cradle panels.
- Simple metal or wood frames no wider than 2.0 inches.
- Mat and liner (if used) must be WHITE.
- Frame must be strung with wire for hanging. No other hangers.
- All submissions must be protected by Plexiglas except for Claybord and Gessobord.
- No varnished paintings.
- Size not to exceed 48" in height or width, frame included
- Painting image no less than 10 inches in any direction.
- Works not suitably presented will not be accepted.
- WAS-H reserves the right to hang your painting in the manner and location we see fit.

■ *Unclothed figure*

- Yes.
- WAS-H reserves the right to refuse entries that are obscene, controversial, or in bad taste.

■ *Awards*

- Cash Awards: 1st Place-\$500, 2nd Place-\$300 and 3rd Place-\$200.
- Five Honorable Mentions - \$100
- Merchandise Awards
- Only one award per artist.
- Winners are notified by phone and/or email

■ *Regulation*

- Paintings must remain in the Gallery for the entire length of the show.
- Any artist or designated agent removing their painting prior to the end of the show is subject to a penalty.

■ *Liability*

- WAS-H will not be liable for damage before, during or after the exhibit, yet utmost care will be used in handling.
- Artwork that adheres to these guidelines will be accepted

■ *Abbreviations*

Medium: WC-Watercolor, A-Acrylic, G-Gouache

Surface: P-Paper, YP-Yupo, CB-Claybord, GB-Gessobord.

Artist Workshop at WAS-H

October 8-12: Carl Dalio workshop (waiting list only)

October 7: Carl Dalio demo at 2pm at the General Meeting

49th Annual Members Exhibit Important Dates

Take-In: Thursday-Friday, October 4 & 5, 10 a.m. to 3pm. (Paintings may be brought in BEFORE October 4 during regular gallery hours. See procedures at WAS-H Gallery). **Entry closes at 3 pm on Friday, October 5.**

General meeting and judge Carl Dalio's demo: Sunday, October 7, 2:00 pm – 3:30 pm

Awards reception: **October 7, 3:30 pm – 5:30 pm** | Pick up unaccepted paintings: Tuesday, **October 10**, during regular gallery hours | Last day of exhibit: Thursday, **November 1, 2017**

Pick up exhibited paintings: Fri - Sat, **Nov 2 & 3** during regular gallery hours (late fee \$10/painting if >2 weeks)

Please address all questions to AME Director: Karen Capper, 832-277-4688, ame@watercolorhouston.org.

Name _____

Email _____

Tel. (H) _____ (C) _____

Title #1 -----

Price _____ Medium _____ Surface _____

Title #2 -----

Price _____ Medium _____ Surface _____

Title #3 -----

Price _____ Medium _____ Surface _____

I grant WAS-H permission to reproduce the artwork for publicity, documentary, or educational purposes. I accept the terms of the prospectus and confirm that the artwork meets the stated regulations, INCLUDING ORIGINALITY AND USE OF REFERENCE PHOTOS.

SIGNATURE _____ DATE _____

Attach this label or a facsimile to the back of each painting.

Name _____

Tel. _____ Price _____

Title _____

Framed Size ____ x ____ Medium _____ Surface _____

Name _____

Tel. _____ Price _____

Title _____

Framed Size ____ x ____ Medium _____ Surface _____

Name _____

Tel. _____ Price _____

Title _____

Framed Size ____ x ____ Medium _____ Surface _____