

December 2018/January 2019

November Gallery Show

By Helen Lim, Gallery Director
Photography by Robin Beckwith



1st place - Mint Tea in Morocco
by Cleo Ceeney

The November exhibit brought to our gallery another collection of beautiful artwork. We were very excited to have WAS-H's very own Carla Gauthier judge the November show. Carla awarded first place to Cleo Ceeney for her "Mint Tea in Morocco". Carla said "this painting is both riveting and humorous - the gaze of these two young men as they are posed holding their teacups is so serious, but you can just feel that they are ready to crack up laughing... a true portrait in that you feel like you know more about the sitters than meets the eye." Second place went to "Towards Rollover Pass (B.I.)" by Erik T. Sprohge. Carla thought this painting was striking because of its sense of atmosphere. She said "You can feel that light that is burning off the early morning fog, making that beautiful reflection in the water. The birds are also beautifully painted, the way they are just subtly standing out from the clouds. Nicely done." Carla awarded third place to "Butterfly" by Xylina Wu. She said "It was refreshing that the subject of butterflies was worked into such a well-designed composition. The repetition of patterns and use of values to create depth work together to make a strong painting...small but mighty!" A huge thank you to all the WAS-H artists who participated in this show and to all the volunteers who made this weekend a success. Happy Painting!

First Place: Mint Tea in Morocco by Cleo Ceeney
Second Place: Towards Rollover Pass (B.I.) by Erik T. Sprohge
Third Place: Butterfly by Xylina Wu

Honorable Mentions:
Me Too by Cheryl A. Evans
Sunset Storm by Christine Bunger
Karl's Dream by Kim Granhaug
Weathered Wood by Fontaine Jacobs
Lenitive by Ruby E. Allen
Illiterate by William Tone
Cotton by Sana Shaw
The Bold and Confident by Kyunghee Johnson



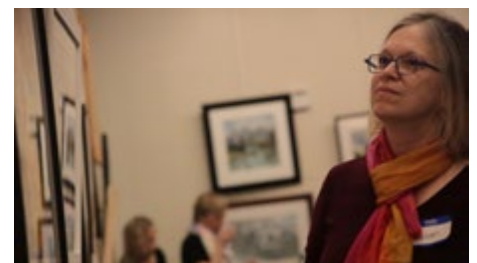
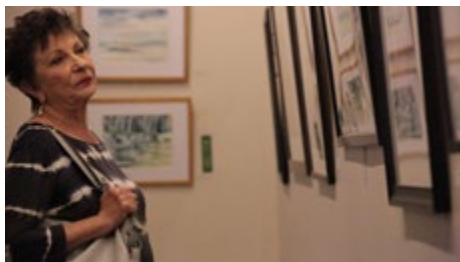
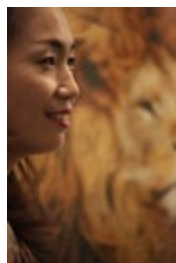
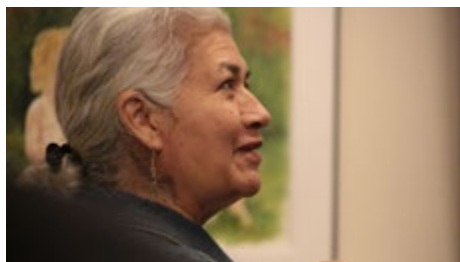
3rd place - Butterfly by Xylina Wu



2nd place - Towards Rollover Pass (B.I.) by Erik T. Sprohge

November Reception

Photography by Robin Beckwith



**Watercolor Art Society -
Houston | location and hours:**

1601 W. Alabama at Mandell
Open Tuesday – Saturday

10:00 am – 3:00 pm

For information, please
contact:

Martin Butler, Administrative
Assistant **713-942-9966**

www. watercolorhouston. org

email: **admin@**

watercolorhouston. org

Submit Your Article

Did you go on an interesting trip, see a great exhibition, participate in a workshop or class? Please share your experience with Washrag readers!

Do you have an art related question? Would you like to learn more about a certain technique or material? Your art questions will be answered by WAS-H teachers and signature members.

Submit your letters and articles via email only to

washrag@watercolorhouston.org.

Deadline for members to submit articles for the upcoming issue of Washrag is

the 15th of the previous month.

Material not received by the deadline will appear in the next month's Washrag.

Member Teachers Listing

Ksenia Annis, figure sketching, digital
art, ksenia@tummyrubb.com
www. tummyrubb.com

Robin Avery 713-410-1075 NW,
Tomball, Champions, robinaveryartist.
com, Robinavery47@gmail.com

Prof. Dr. Mohammad Ali Bhatti, MFA, PhD
Portrait, flower, landscape/cityscape
painting - artistmohdali@yahoo.com

Peihong Endris, WAS-H, 713-206-3668
Chinese Brush Painting
Peihong1512@gmail.com

Liz Hill, WAS-H, 713-252-7726,
Mixed Media, lizhill4u@aol.com

Susan Giannantonio, Katy, TX &
Mayville, NY lucholiz@gmail. com,

Les McDonald, Jr., WAS-H, Houston
watercolor techniques, all levels.
(713) 977-4729 les@lesmcdonald.com

Carol Rensink, WAS-H
Figure Drawing & Anatomy
713-299-4136, crensink.art@att. net

Robert Ruhmann, Watercolor
Landscapes 979-864-0155
raruhmann@gmail.com

Mary Rustay, WAS-H, Watercolor
for Seniors 713-703-1533 rustay@
heritagetexas.com



Wednesday Model Session

The Wednesday Model Session group continues to meet every Wednesday, 12:30 pm – 3:30 pm (unless there is a workshop scheduled) at WAS-H. Please email Carol Rensink at the address below to find out the name of the model each week before the session. Come with your drawing and painting gear and do your own thing for three quiet hours of model time. It is a wonderful opportunity.

Monitor: **Carol Rensink**, 713-299-4136 or **wedwash@gmail. com**

Celebrating New WAS-H Members of October 2018

Stewart Baker
Pamela Beck
Lynda Brown
Rosangela Bufalino
Angela Castro
Leslie Chang

Sandra Cornwell
Liz Czerewaty
Eleana Gordon
Samira Holt
Diana Kazakova
Geri Kennedy

Charlotte Klebanoff
Kay Modi
John O'Black
Denny Scaria
Carol Slobin
Joan Smullen

Rozi Turnbull
Phillipa Vaporciyan
George Vaughn
Nan Wright



Become Our Sponsor

WAS-H members, friends, businesses, teachers and organizations have the opportunity to offer your talent or service to 800+ WAS-H members. Our newsletter comes out 10 times a year - your ad could be in it with interactive links to your website!

Please contact via email:

washrag@watercolorhouston.org

and

beverlyaderholt@att.net

Sponsorship rates:

Full page - \$75/issue

Half page - \$50/issue

Quarter page - \$25/issue

1/8 page - \$15/issue

Teachers listing \$25/year (due September 1st)

Donate to WAS-H

Randall's offers 1% of your purchase with their Good Neighbor Program. Register at the courtesy booth with WAS-H's ID #4553. Every time you use your Randall's Remarkable Card, WAS-H will receive a credit.

Amazon donates \$.05 to WAS-H for every \$10 you spend! When shopping online, click <https://smile.amazon.com/>

**We Offer a 20% DISCOUNT
To All WAS-H Members!**

art
SUPPLY
ON MAIN

2711 Main St.
Houston, TX
77002

If you need
more directions
Please call

ART SUPPLY
(713) 652-5028

email vikki: artsuply@swbell.net



Full Service Frame Shop

**All frames meet
WAS-H specifications**

Top quality custom frames
Plexiglas and acid-free mats

20% WAS-H Member Discount

No Minimum Order

By appointment only – call or email

Les McDonald, Jr.

(713) 977-4729

les@lesmcdonald.com

2623 Stoney Brook Drive

Houston, TX 77063



From the President

Dear WAS-H members and friends,

As we usher in the holiday season this December and January, I wish all of you a wonderful, happy and safe celebration with family and friends, as well as all the best that 2019 has to offer. Our December small painting show and holiday reception is always a delightful get-together. Please stop by if you can, Sunday, December 2nd at 3:30 p.m.

We will have refreshments, and it is a wonderful time to pick up a small painting as a gift for someone special—including yourself! Just a reminder that we do not have a General Meeting or Demo in December.

As I mentioned in last month's note to you, we now are in the midst of our Annual Fund Drive. Please consider donating to WAS-H. Our membership dues do not cover all of our expenses, and we depend on the kind generosity of those of you who are able to donate to WAS-H to keep WAS-H thriving. Our building is now 12 years old, and with those years, maintenance and repair costs have been increasing, many of which need to be done by professionals.

In addition to our Annual Fund, we are raising funds to replace our ceiling camera in the classroom, which we use for demos, classes and workshops. It is losing pixels and struggling to focus. We are very fortunate to have such a wonderful A/V system at WAS-H, and it will cost about \$4,600 to replace and install the camera with one that will fit where the existing camera is located. We do not have this amount in the budget right now. If you are also able to contribute to this fundraiser, please indicate that your donation is for the ceiling camera on your online donation memo, check or with a note that you include. Many thanks in advance.

As part of the process of looking at our building security, we asked the Precinct One Constable's office to send their security expert to WAS-H to assess our building and make suggestions. It is a wonderful free public service that the Constable's office provides. Vice President, Kathleen Church, met with the Deputy Constable at the end of October. The good news is that our building is fairly secure. He did suggest that we consider improving lighting in the parking area on Mandell, as well as replacing existing first floor glass door and windows with a non-breakable tinted glass. His recommendation is that we address these items as a precursor to installing a security system. We are in the process of looking into the cost of each of these items to see what we reasonably can do. The Board will meet again in January to consider next steps.

I hope to see you at the December reception. As always, I welcome your thoughts and suggestions when I am at WAS-H or by email at president@watercolorhouston.org.

Best,

Laura McMahon
WAS-H President

WAS-H Calendar at a Glance

For more information, please visit our website - [https://www.watercolorhouston.org/Calendar of Events](https://www.watercolorhouston.org/Calendar%20of%20Events)

December 2018

Dec 01 Take-In for Monthly Show
Dec 02 Monthly Show Reception
Dec 07, 14 Open Studio for Members
Dec 12 Wine Down Wednesdays
Dec 06, 13 Art for Seniors

Please note there will be no Demo, no Paint-In and no Paint-Out in December.

January 2019

Jan 03, 10, 24, 31 Art for Seniors
Jan 04 Pick Up December Gallery Show Paintings
Jan 04, 11, 24 Open Studio for Members
Jan 05 Take-In for Monthly Show
Jan 06 General Meeting, Demo and Reception
Jan 19 January Monthly Paint-In
Jan 19 Paint-out - Location TBA
Jan 20 Sunday Art Jam
Jan 23 Wine Down Wednesdays

November Demo

by Helen Lim, gallery director and Laura McMahon, president

Photography by Robin Beckwith

Accomplished artist and WAS-H teacher, Carla Gauthier, was our demo artist for November's General Meeting. All of those attending watched and listened intently, trying to absorb every bit of information presented. Carla began by discussing the importance of value in a painting. She introduced the Japanese word "notan," which means "light-dark balance," and discussed the Principle of Notan as it relates to design involving the play and placement of light and dark elements in a composition. She shared with us an app, called Notanizer, which helps break down a photograph by value scales, and demonstrated how it can be used in various ways. She had created three images of her reference photo, one with light tones, one with medium and one with dark. She began her painting demo of a landscape, using wet in wet technique and beginning with the lightest values first, demonstrating how to achieve atmospheric perspective. She went on to show us how to monitor the paint on the paper as it dried to achieve soft edges, while avoiding "blooms".

Moving to her second (mid-tone) reference photo, she painted the trees while being very careful to let some light shine through on the side facing the sun. She also painted the house and then brought some of the mid tones into the foreground. Next, she moved to her third (dark-tone) reference photo and painted the dark values in the tree — adding branches and definition to the tree trunk. She included a car and brought some of the dark tones into the foreground. With a few final touches, Carla completed the painting and was met with "ooh's and ahh's" from the audience. Carla had demonstrated how easy it is to take a simple landscape and transform it into an interesting painting by breaking it down into three value studies.

Thank you Carla for the wonderful demonstration and for gifting your demo fee back to WAS-H!



January Demo

by Kathleen Church, WAS-H vice president



January 6, 2019, Sunday

1:30 p.m. Social; 2:00 p.m. General Meeting; 2:15 p.m.-3:30 p.m.

demo by Janet Hassinger

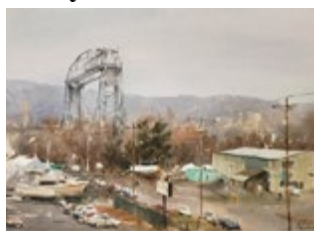
Our demo artist for January is long time WAS-H friend Janet Hassinger. Janet has a BFA in painting from Boston University, an MA in painting from New York University's program in Venice Italy and an MFA from Stephen F. Austin University in studio arts. She has taught watercolor for the Museum of Fine Arts Houston and has taught life drawing, art history and watercolor for the College of the Mainland for more than 20 years. We are delighted to

have Janet back with us again to share her luminous watercolor process with us.

Major Workshops

A PREVIEW OF GOOD THINGS TO COME: MAJOR WORKSHOPS

by Kathleen Church, WAS-H vice president



IWE 2019: Andy Evansen

Registration Open: A few spots left!

Publications: Andy Evansen: Secrets of Painting Watercolor Outdoors
Instructional DVD For Artists



AME 2019: Jean Haines

Jean will teach 2 two-day workshops.

Publications: Paint Yourself Calm, Jean Haines World Of Watercolour, Colour and Light in Water Colour (How to Paint), Atmospheric Watercolours, and many DVD's



IWE 2020: Joyce Hicks, AWS

Publications: Painting Beautiful Watercolor Landscapes

Painting Beautiful Watercolor Landscapes with Joyce Hicks - go to **YouTube**



AME 2020: Judy Morris, AWS

Publications: Watercolor Basics: Light, Tuscan
Textures, Using Salt



IWE 2021: Keiko Tanabe, AWS

Publications: Journey Home Volume 1: My Watercolor Paintings of Japanese Landscapes 2005 - 2015

January Paint-Out

by **Mary Glover Rustay, Paint-out Coordinator**

There will be no Paint-out in December, but there will be a Paint-out on January 19, 2019 from 9 am to 3 pm, and it will be local (place to be announced depending on the weather forecast). We will also be having another paint out on February 16, 2019. We would welcome ideas for Paint-out locations from our members.

In March we are planning an overnight Paint-out in Blanco, Texas near Wimberly, TX. Our Past President Jan Shrader and her husband have invited us to come to their country property for a day of painting away from Houston and its urban sprawl. Their ranch is located in the rolling hill country on the banks of the Blanco River. Please watch for more details with address and directions on how to get there!

We will have our last Paint out of the Spring on May 18, 2019. No summer Paint-outs are planned at this time. Save the dates for 2019:

- January 19 - Paint-out planned in or around Houston—location to be announced, time 9 am-3 pm.
- February 16 - Paint-out location to be announced
- March 16 - Overnight Paint-out in Blanco, TX at a country ranch on the Blanco River near Wimberly, TX.
- April 20 - Paint-out location to be announced
- May 18 - Paint-out location to be announced

Merry Christmas and Happy New Year to our WAS-H Membership! I hope you will join us next year!

If you have questions, please contact Mary Glover Rustay, Paint-out Coordinator at (713)703-1533 –cell (713)965-9393 –home, (713)965-0812, ext. 1668 -work or by email: rustay@heritagetexas.com

Please register for the upcoming paint-outs on our website, go to <https://watercolorhouston.org/page-1075220> and click on the appropriate date.

Tips from the Master



Photo credit: Alice Rogers

Robin Avery sharing humor and ideas to turn a “not ready for prime time” painting into a gallery entry at the November Paint-In

Betty and Me through the Ages

by **Robin Avery, WAS-H elite signature member and teacher**

I was recently asked to teach the Beginners Newbies Class at WAS-H. It was almost as if they asked me to begin again as a young bride or new mother. How one paints after so many years can be daunting to explain. I can compare it to opening the first cookbook I ever had. It was a Betty Crocker spiraled bound book with recipes an inch long. Probably six or seven recipes on a page. I labored through that book! I knew nothing about anything in the kitchen. Plus, on a teacher’s limited paycheck and a husband in law school, I knew my culinary skills would not be too challenged! But even so, I labored to follow those directions and to cook edible meals.

After a few years I even advanced to reading and following Julia Child Volume One. (This was before Julie in that movie Julie and Julia!) So, thinking about my laborious start in the kitchen was like first starting to paint in watercolor. To all you beginners, think of learning to paint in watercolor like learning to cook those first meals! You need to learn the basics: Buy the right tools and the best you can afford. Learn about your pigments--what colors are complementary, which are contrasting and what happens when you mix them

together. Be patient with yourself (and waiting for the paint to dry before applying another layer). Spend lots of time practicing. If you do, that time will pay off and soon you will be creating personal expressive watercolor paintings. Eventually, it will come naturally like cooking in the kitchen. But beware, you may stop cooking altogether and just want to paint!

Spring 2019 Classes

by Laurie Hammond, Education Director

As 2018 draws to a close, it is time for us to make a New Year's resolution to improve our watercolor skills and have some fun learning with our friends at WAS-H. We have classes coming up this spring for all skill levels. (Class start dates are in parentheses.)

Beginners

For Beginners, we have classes dedicated to learning the basics: **Robin Avery** will teach a 2-day Saturday session (1/12/19) as well as a session on four Monday afternoons (2/4/19). **Robert Ruhmann** will have his beginner class on Tuesday evenings (2/19). Our **Beginner Academy** is finishing up its 5-session run, and is planned to start again next summer.

Techniques

For those who want to sharpen their skills, **Fred Kingwill** is offering an evening Intermediate Class (1/7/19). **Carol Rensink** will teach Figure Drawing and Anatomy on Wednesday mornings (1/23/19) and **Liz Hill** will offer Draw and Paint the Model on the weekend of 3/29/19.

Learning lessons from the masters, **Susan Giannantonio** will lead a workshop on Impressionism (3/9/19) and **Caroline Graham** links to the upcoming MFAH exhibit to show us techniques used by Van Gogh (5/11/19). **Carla Gauthier** refines our talents with classes on Composition (1/10/19), Getting to the Finish Line (3/14/19) and Bringing Your Work to the Next Level (4/11/19); she will teach weekend workshops on Using Darks (2/22/19) and Shadows (4/26/19).

Special Interest

We also have some great classes on topics of special interest. **Mohammed Ali Bhatti** will teach classes on Portrait Painting (2/12/19) and Portrait Drawing (5/14/19). **Robin Avery**'s new workshop on cats and dogs (1/13/19) expands upon last winter's popular class. **Peihong Endris** has a unique new class on the Chinese Animal Zodiac, parts 1 & 2 (1/22/19 and 6/4/19).

For Landscape lovers, on Tuesday evenings **Robert Ruhmann** will guide us to paint Awe-Inspiring Texas Landscapes (1/22/19) and Rocks (4/2/19). We have **Peihong Endris**'s latest Chinese brush painting class, Southern China Landscape weekend workshop (4/12/19). **Prof. Bhatti** will teach his Landscape Techniques class beginning 4/16/19.

Combine techno-skills with your artistic ideas in **Ksenia Annis**'s one-day workshops on the iPad and Procreate (2/9/19) and on Photoshop essentials (2/10/19).

The **1-1-3-3 model lab** returns in February and April to offer one model/one pose/three hours/three days. (2/11/19, 4/15/19).

For flower fans, **Susan Giannantonio**'s Botanicals class will show us how to use dried plants and other techniques in our paintings (3/23/19). Then **Prof. Bhatti** will teach Flower Painting (3/19/19), and **Monika Pate** will teach us in her realistic style of Painting Flowers in Transparent Watercolor (5/24/19).

Registration opens on **Saturday, December 1, 2018 at 10:30 a.m.**

December Classes Still Have a Few Openings



Give yourself a holiday gift of serenity: sign up for these December classes.

HOLIDAY CARDS WITH GOLD LEAF - Susan Giannantonio

Sunday, December 2, 10:30am - 3:30pm, \$50

Here's a fun one-day workshop where we will create holiday cards and discover the tricks of gold leaf as you decorate your cards or small paintings. First, we will use our imaginations to create a winter forest collage or painting on a few greeting cards or small watercolor papers. Then we will experiment with gold leaf under

Susan's playful guidance. <https://watercolorhouston.org/event-2998596>

December Classes Still Have a Few Openings



GET THE FIGURE YOU WANT! Capturing proportions fast while sketching - Ksenia Annis

Saturday and Sunday, December 8-9, 9:30 - 3:30, \$100

In this class Ksenia will share her techniques for quickly and effectively capturing proportions while sketching a human figure – no measuring required. Students will work from a live model and most of the time will be dedicated to practical work. <https://watercolorhouston.org/event-3001487>

WATERMEDIAGALLERYDEMONSTRATION-Sell Your Art

Thursday, November 29, 7:00-8:30pm, free

Join Susan Giannantonio for a free demonstration of WaterMediaGallery.com, a website dedicated to artists who wish to sell their work and, for a small monthly membership fee, artists receive 100% of their sale price. <https://watercolorhouston.org/event-3121448>



LANDSCAPE WITH OLD BARN -- Les McDonald

Saturday & Sunday, December 15-16, 9:30am-3:30pm, \$100

This workshop will be an exercise painting a landscape featuring a big red barn with a tree and surrounding details. It may look complicated, but it's NOT. Demos, with step-by-step explanations of the concepts and technique will be provided. You will have the option of working from your own subject matter or from my photo materials. All levels. <https://watercolorhouston.org/event-3055347>

New Year's Resolution: Enter the 42nd IWE

by Tom Kraycirik, IWE Co-Director

Start the New Year off with an investment in yourself. Submit one, two or three of your latest paintings to the 42nd Annual Watermedia Exhibition. Your investment dividend for time and effort will be an opportunity to vie for recognition, professional exposure, cash awards and sale of your works.

With less than a month to go before the January 11, 2019, 11:59 p.m. MST submission deadline, artists here and overseas are finishing up their most current work and combing through recent painting to submit to the 42nd Annual IWE.

For more than 41 years, this premier event of the Watercolor Art Society-Houston has attracted the best national and international artists to compete in this widely lauded and prestigious exhibition for the more than \$7000 in prizes and recognition. This highly anticipated and broadly promoted event attracts art buyers, patrons, collectors as well as the public at large to the Watercolor Art Society-Houston's gallery for the month-long exhibition which runs from March 3, 2019 to April 4, 2019. Works in water media which may include watercolor, acrylic, gouache, ink, casein or egg tempera will be on display in this professional quality, juried competition. Complete listing of rules, regulations, deadlines, fees, etc., outlined in the 42nd annual IWE prospectus, can be found by clicking the appropriate tab at the WAS-H website along with a tab for the Café entry system - <https://watercolorhouston.org/International-Exhibition>

The exhibition will open on Sunday, March 3, 2019 at 3:30 p.m. with an awards ceremony in the WAS-H upstairs workshop during which winners will be announced and prizes awarded. A reception and in the WAS-H gallery will follow with the top 100 works of art on display. Prior to the ceremony, there will be a painting demonstration by this year's IWE juror Andy Evansen, AWS, NWWS, RRWS, PAPA from 2:15-3:30 p.m. Mr. Evansen's paintings have appeared on the cover of many national and international artists magazines and

Enter the 42nd IWE (cont.)

is a much sought-after workshop instructor who paints and teaches internationally. He will also conduct a week long workshop for enrolled participants in the week following the IWE opening and awards ceremony. More on Mr. Evansen can be found at his website: www.evansenartstudio.com

For those who missed the opening ceremonies, an Artists Lovers Reception is planned for the following Thursday, March 7, 2019 at the WAS-H gallery from 5:30 p.m. to 7:30 p.m. Also, the Art Party, a reception for those “new to watercolor” and the younger set will be held Thursday, March 29, 2019 from 6 p.m. to 8 p.m. in the WAS-H gallery.

From Our Members

My Artist Studio by Enrieta C. Azad



When I started, I sometimes wondered what did others find useful in their studio. I may not be a famous artist but I enjoy spending time in mine. Each of us have different styles. I enjoy painting sitting down comfortably indoors, no plein air or standing up for me. In the spirit of sharing, this is how I have set up my studio.

I was lucky that my old table broke in my last move, because I love my new one. It is the Aries Glass Top Drafting Table. I like that I can easily change the tilt of the table and I can tape my reference photo on the underside of the glass so I can see it while it is protected. My chair has lumbar and arm support. I have an outdoor rug to protect the white tile and yoga mats where I am more

likely to drop paint.

I once looked at those artist tabourets in the art supply catalogs, but I chose items from other sources. On my right side, I have a chest of drawers that you can find in office supply stores to which I have attached a large square tray made out of plywood. In the tray, I place my palette, water containers, water bottles, paper towels and brushes that I am using at the moment. In the drawers, I have extra towels and items like acrylic medium.

On the left side, I have a three-level kitchen cart. The beauty of the cart is that you can adjust the spacing between the shelves. I placed my brush collection in the second level where I can easily see and reach them while sitting down. Masking fluid, erasers, sharpeners and various small tools go on the top shelf while the bottom shelf holds painting tubes in boxes.

My paper and painting storage cabinet is custom-made and I love it. It has 8 drawers. The drawer facing does not go all the way to the bottom of the next one so that air can circulate and so that I can see what is in it without having to open it.

So that is my studio in a nutshell. If you have any questions, please email me at ecazad1@gmail.com



Tip #2

I read somewhere that standing a brush upright while it is still wet can damage the ferrule. I use soap savers to lay my wet brushes horizontally while they dry, keeping the brush head in the air.

Here are a couple of artist tips from Enrieta's studio:

Tip #1

I found scalloped-edge containers in an art supply store. I have also seen them in the dollar stores. I am not sure if they are vases or candle-holders. I like that I can set my brush on top while I am painting and it stays in place.



Art on “The Go”

by Shirl Riccetti, WAS-H member

Always ready to chronicle the sights, WAS-H Past President, Louise H. Bateman sent an account of her very busy art visit to France. With many WAS-H artists in the group, they appreciated the scenery and experience in full color (a carpe diem experience). Send me your ideas for travel stories please, my email is sriccetti@comcast.net.

Carpe Diem,
Shirl Riccetti



An Impressionist Journey through Normandy **By Louise H. Bateman, WAS-H Past President**

Several WAS-H members joined Susan Giannantonio and her husband Bruce Winquist, on an unforgettable week-long impressionist journey through Normandy, France, led by our tour guide Ilmothée Faberger from “Out of this World Travel”. WAS-H members on the tour included Jan McNeill and her husband Frank Griffin, Anna Griffith, Nancy Stephenson, Nancy Wills, Kathleen Cooper and Louise Bateman and her husband Roy Bateman.

Some of the places visited included the lovely town of Barbizon, Claude Monet’s House and Gardens in Giverny, Mont Saint Michel, Honfleur, Etretat and Rouen. The group also asked for a special side trip to the D-Day Beaches visiting the US Cemetery as well as the German Cemetery. It was a very emotional experience.

Our guide also “surprised” us with special tours and experiences, such as a visit to a private terraced garden, enjoying cider, cheese and a baguette on our tour bus, and a private lesson with French pastry chefs, making a Normandy apple tart “from scratch”. Key ingredient – calvados! Everything tastes better with calvados. As you can see from the picture, I think our chef hats made us better pastry students!

The weather was almost perfect.....except for the day in Etretat. We had intended to spend time painting the famous cliffs and arches, but Mother Nature intervened with a steady rain and wind that blew the rain “sideways”. We decided to retreat to a café, and enjoy un café, un chocolat, or un thé – a classic French experience.

Each day was filled with beautiful sights, museums and of course croissants, baguettes, Normandy cheeses, wine, hard cider and calvados! Of course..... we did manage to fit in some painting time along the way!

January Prospectus

Take-In: Saturday, January 5, 2019, 10am - 12pm

(Paintings may be brought in BEFORE Saturday during regular gallery hours: from 10:00 am to 3:00 pm Tuesday through Friday)

THEME: General/ No theme

Reception: Sunday, January 6, 2019, 3:30 - 5:00pm

Pick up paintings: Thursday, February 1, 2019

Questions: Helen Lim, gallerdirector@watercolorhouston.org

Juror: Janet Hassinger has a BFA in painting from Boston University, an MA in painting from New York University's program in Venice, Italy and an MFA from Stephen F Austin University in studio arts. She has taught watercolor for the Museum of Fine Arts, Houston, and she has taught life drawing, art history and watercolor for the College of the Mainland for 20 years. Her broad knowledge of contemporary art comes from curating for the COM College Gallery for 15 years. As a teacher she is interested in developing the innate talent many individuals have and enjoy. Currently Janet maintains a studio and home in Galveston.

Eligibility and Requirements:

- Artist must be a current WAS-H member.
- Artwork must be completed within the last 24 months.
- Up to three entries per artist.
- Fee of \$10 per entry.

Artwork Regulations:

• *Water soluble media*

At least 80% water media: watercolor, acrylic, gouache, egg tempera, casein, ink.

• *Surfaces*

Paper, Yupo, Claybord, Gessobord (with or without cradle), paper based board (illustration or art board), Canvas is NOT accepted.

• *Originality*

- Photo references allowed:
 - permission granted photos taken by others
 - photos no longer copyright protected
 - purchased photos
- NOT painted from another's painting
- NOT painted under supervision, or from teaching DVD or book (except Student Exhibit.)
- NOT won in any monthly exhibit or accepted in AME or IWE exhibit,
- NOT repainted from winning image
- Only original artwork (no giclees, copies, etc.)

• *Collage*

Allowed as long as water media is the dominant element, No restrictions on collage source (i.e. Fabric allowed, commercial papers, photos, etc.)

• *Enhancement Media*

Less than 20% watercolor pencils, pastels, wax accents/resists, char coal, graphite, water based iridescent paints

• *Pricing*

- Paintings will have sales tax added at time of sale.
- Can be for sale or NFS (not for sale).
- Donation to gallery of 20% for cash sales and 25% for credit card sales.

• *Matting and Framing Regulations*

- Must be framed. Only exception is Claybord and Gessobord wood cradle panels.
- Simple metal or wood frames no wider than 2.0 inches.
- Mat and liner (if used) must be WHITE.
- Frame must be strung with wire for hanging. No other hangers.
- All submissions must be protected by Plexiglas except for Claybord and Gessobord.
- No varnished paintings.
- Size not to exceed 48" in height or width, frame included

• *Unclothed figure*

- Yes.
- WAS-H reserves the right to refuse entries that are obscene, controversial, or in bad taste.

• *Awards*

- Cash Awards for 1st - \$100, 2nd - \$75 and 3rd - \$50.
- Honorable Mentions awarded a ribbon - no cash.
- Only one award per artist.
- Winners are notified by phone and/or email.

• *Regulation*

- Paintings must remain in the Gallery for the entire length of the show.
- Any artist or designated agent removing their painting prior to the end of the show is subject to a penalty.

• *Liability*

- WAS-H will not be liable for damage before, during or after the exhibit.
- Artwork that adheres to these guidelines will be accepted with the provision that WAS-H reserves the right to reject any entry that is controversial, obscene or in bad taste.

• *Abbreviations*

Medium: WC-Watercolor, A-Acrylic, G-Gouache

Surface: P-Paper, YP-Yupo, CB-Claybord, GB- Gessobord

Registration Form (NOTE: Each painting MUST be titled).

Take-In: Saturday, January 5, 2019, 10am - 12pm

(Paintings may be brought in BEFORE Saturday during regular gallery hours: from 10:00 am to 3:00 pm Tuesday through Friday)

Reception: Sunday, January 6, 2019, 3:30 - 5:00pm

Pick up paintings: Thursday, February 1, 2019

Questions: Helen Lim, gallerdirector@watercolorhouston.org

Name _____

Email _____

Tel. (H) _____ (C) _____

Title #1 -----

Price _____ Medium _____ Surface _____

Title #2 -----

Price _____ Medium _____ Surface _____

Title #3 -----

Price _____ Medium _____ Surface _____

I grant WAS-H permission to reproduce the artwork for publicity, documentary, or educational purposes. I accept the terms of the prospectus and confirm that the artwork meets the stated regulations, INCLUDING ORIGINALITY AND USE OF REFERENCE PHOTOS.

SIGNATURE _____ DATE _____

Attach this label or a facsimile to the back of each painting.

Name _____

Tel. _____ Price _____

Title _____

Framed Size ____x____ Medium _____ Surface _____

Name _____

Tel. _____ Price _____

Title _____

Framed Size ____x____ Medium _____ Surface _____

Name _____

Tel. _____ Price _____

Title _____

Framed Size ____x____ Medium _____ Surface _____

February Prospectus

Take-In: Saturday, February 2, 2019, 10am - 12pm

(Paintings may be brought in BEFORE Saturday during regular gallery hours: from 10:00 am to 3:00 pm Tuesday through Friday)

Juror: Caroline Graham, WAS-H Elite Signature Member, received her MA from the University of Texas. She began her art training in San Antonio at the Witte Museum and continued as a teenager at the McNay Art Institute. Her love of figures and portraits was sparked by Marge Brichler, continued under Jose Perez, and eventually led to study in the Anatomy Lab at the Baylor College of Medicine. She is an award winning artist and maintains a studio in Houston. Her work has been included in numerous exhibitions and collections, and her portraits and commissions can be seen all over Houston. In addition to her weekly watercolor classes at the Art League of Houston, she teaches workshops here and abroad.

Eligibility and Requirements:

- Artist must be a current WAS-H member.
- Artwork must be completed within the last 24 months.
- Up to three entries per artist.
- Fee of \$10 per entry.

Artwork Regulations:

• *Water soluble media*

At least 80% water media: watercolor, acrylic, gouache, egg tempera, casein, ink.

• *Surfaces*

Paper, Yupo, Claybord, Gessobord (with or without cradle), paper based board (illustration or art board), Canvas is NOT accepted.

• *Originality*

- Photo references allowed:
 - permission granted photos taken by others
 - photos no longer copyright protected
 - purchased photos
- NOT painted from another's painting
- NOT painted under supervision, or from teaching DVD or book (except Student Exhibit.)
- NOT won in any monthly exhibit or accepted in AME or IWE exhibit,
- NOT repainted from winning image
- Only original artwork (no giclees, copies, etc.)

• *Collage*

Allowed as long as water media is the dominant element. No restrictions on collage source (i.e. Fabric allowed, commercial papers, photos, etc.)

• *Enhancement Media*

Less than 20% watercolor pencils, pastels, wax accents/resists, char coal, graphite, water based iridescent paints

THEME: Magic and Mystery of the Southwest

Reception: Sunday, February 3, 2019, 3:30 - 5:00pm

Pick up paintings: Thursday, February 28, 2019

Questions: Helen Lim, gallerdirector@watercolorhouston.org

• *Pricing*

- Paintings will have sales tax added at time of sale.
- Can be for sale or NFS (not for sale).
- Donation to gallery of 20% for cash sales and 25% for credit card sales.

• *Matting and Framing Regulations*

- Must be framed. Only exception is Claybord and Gessobord wood cradle panels.
- Simple metal or wood frames no wider than 2.0 inches.
- Mat and liner (if used) must be WHITE.
- Frame must be strung with wire for hanging. No other hangers.
- All submissions must be protected by Plexiglas except for Claybord and Gessobord.
- No varnished paintings.
- Size not to exceed 48" in height or width, frame included

• *Unclothed figure*

- Yes.
- WAS-H reserves the right to refuse entries that are obscene, controversial, or in bad taste.

• *Awards*

- Cash Awards for 1st - \$100, 2nd - \$75 and 3rd - \$50.
- Honorable Mentions awarded a ribbon - no cash.
- Only one award per artist.
- Winners are notified by phone and/or email.

• *Regulation*

- Paintings must remain in the Gallery for the entire length of the show.
- Any artist or designated agent removing their painting prior to the end of the show is subject to a penalty.

• *Liability*

- WAS-H will not be liable for damage before, during or after the exhibit.
- Artwork that adheres to these guidelines will be accepted with the provision that WAS-H reserves the right to reject any entry that is controversial, obscene or in bad taste.

• *Abbreviations*

Medium: WC-Watercolor, A-Acrylic, G-Gouache

Surface: P-Paper, YP-Yupo, CB-Claybord, GB- Gessobord

Registration Form (NOTE: Each painting MUST be titled).

Take-In: Saturday, February 2, 2019, 10am - 12pm
(Paintings may be brought in BEFORE Saturday during regular gallery
hours: from 10:00 am to 3:00 pm Tuesday through Friday)

Reception: Sunday, February 3, 2019, 3:30 - 5:00pm
Pick up paintings: Thursday, February 28, 2019
Questions: Helen Lim, gallerydirector@watercolorhouston.org

Name _____

Email _____

Tel. (H) _____ (C) _____

Title #1 -----

Price _____ Medium _____ Surface _____

Title #2 -----

Price _____ Medium _____ Surface _____

Title #3 -----

Price _____ Medium _____ Surface _____

I grant WAS-H permission to reproduce the artwork for publicity, documentary, or educational purposes. I accept the terms of the prospectus and confirm that the artwork meets the stated regulations, INCLUDING ORIGINALITY AND USE OF REFERENCE PHOTOS.

SIGNATURE _____ DATE _____

Attach this label or a facsimile to the back of each painting.

Name _____

Tel. _____ Price _____

Title _____

Framed Size ____x____ Medium _____ Surface _____

Name _____

Tel. _____ Price _____

Title _____

Framed Size ____x____ Medium _____ Surface _____

Name _____

Tel. _____ Price _____

Title _____

Framed Size ____x____ Medium _____ Surface _____