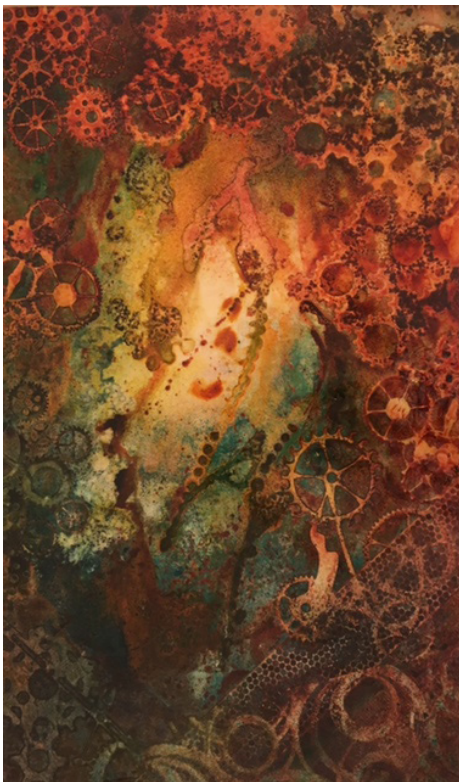


November 2017



48th Annual Members Exhibit Winners

by Karen Capper, AME Director



1st place - Linda Jung "Rust Bucket"

Even with shadow of Hurricane Harvey's devastation, members kept painting and brought more than 150 entries for the 48th Annual Member Show. Those hung included a wide variety of expressions and were amazingly executed. The WAS-H gallery now displays the 94 selected entries chosen for this year's member show, which will be open until November 2nd.

This year's judge was internationally recognized watercolorist, Michael Reardon. Warm and welcoming, he made it enriching to be part of the team which followed him, listening to his comments and watching his facial expressions as he selected the winners. He would point to submissions and make comments like "this is very evocative, which draws me into the work" or "unique point of view" or "strong composition is what first attracts me to this piece," and then he offered observations about the painterly techniques that kept him returning to study an entry more carefully.

First place went to Linda Jung's, "Rust Bucket." Michael pointed to this painting saying it "just grabbed me." An abstract, he found it remarkably unique with rich texture that pulled the viewer towards the bright nebula.

Second place went to Mohammad Bhatti's "Sunset," a portrait of a young African girl. "Who couldn't love this face?" noted Reardon. This amazing portrait is juxtaposed, with atypical orange background.

"Calling Uber" by Jan Shrader was awarded 3rd place. Reardon said the composition was very strong and set up a haunting story which held the viewer, beckoning a deeper look.

The award list included the Director's Award, "Morning Light" by Tommie Wilson which Michael said was "museum quality," while the President's Award was won by Barbara Elmore's "Turtle Man" featuring a delightful facial expression.

The 5 Honorable Mentions went to these entries:

"Dao in the Details" by Alison Hendry

"To Offer" by Thuy Ngayen

"Gladiolas" by Ying Wang

"Creed's Series #14" by Stephanie Williams

"Almost Autumn" by Karen Lindeman

We are thankful for generous gifts from vendors that afforded us 10 Merchandise awards. Top of the list was the gracious prize



2nd place - Mohammad Bhatti "Sunset"

48th Annual Members Exhibit Winners (cont.)

given by Cheap Joe's for the second year in a row. A big thank you goes to our prestigious vendors:

Art Supply on Main
Blick Art Materials
Bradley Art & Frame
Cheap Joe's Art Stuff
HK Holbein
Jack Richeson
Texas Art Supply
Winsor & Newton
Golden Paints
Mission Gold Art
Ampersand



3rd place - Jan Shrader "Calling Uber"



President's Award - "Turtle Man" by Barbara Elmore



Directors Award - "Morning Light" by Tommie Wilson

The Merchandise Awards were spread out to 10 entries.

- #1 "Pueblo Dog" by Liz Hill
- #2 "The Bridge" by Brenda Emery
- #3 "Reverie" by Laurie Hammons
- #4 "The Three Graces" by Cookie Wells
- #5 "Tomorrow's Flowers" by Susenne Telage
- #6 "Daddy's Shoes" by Robbie Fitzpatrick
- #7 "Never Quit" by Duncan Simmons
- #8 "Charlie" by Cleo Ceeney
- #9 "Blow Your Horn, Baby" by Gay Paratore
- #10 "Louette Creek" by Eldon Faries

Honoring Past Presidents



WAS-H past presidents attending the October 2017 Annual Members Exhibit General Meeting were thanked for their years of service and presented with an honorary name badge. From left to right:

- Mary Glover Rustay 1979-1980
- Linda Vanek 2011-2012
- Jan McNeill 2013-2014
- Jan Shrader & Susi Telage 2013-2014
- Beverly Aderholt 2014-2016
- Lynne Woods 2016-2017

AME Reception Photos



From left - Linda Jung, Michael Reardon, Karen Capper



Michael Reardon judging exhibition entries

October General Meeting

FEATURED DEMO ARTIST MICHAEL REARDON

By Laura J. McMahon, Vice President



water. He emphasized the importance of a value sketch, which he paints from to remind him of where his darks should be, rather than the reference photo which he puts away after he has sketched the painting on paper. He told us that if we get our values right, we can use any colors.

A John Singer Sargent exhibit inspired him to get back into watercolors after he had given up on it ten years earlier. He then joined a group of architects to plein air paint once a month and took a couple of workshops with Jean Dobie and Charles Reid and was off and running. Like many of us, he loves the luminosity of watercolor. He paints with the easel raised, somewhere between flat and vertical, and starts with an underpainting that he lets dry before beginning again at the top painting all the way down in one sitting, usually no longer than an hour and a half with a limited palette. He noted that water is defined by reflections, which are usually 10% darker than what they are reflecting. He used negative painting around the water wheel and painted wet-into-wet, letting the watercolor “do its own thing.”

Thank you, Michael Reardon for sharing your technique and beautiful painting with us.

A standing room only crowd at WAS-H saw a wonderful demo by Michael Reardon at the October General Meeting, held in conjunction with the Annual Members Exhibit award ceremony and reception. Michael's demo was of a water wheel in L'Isle-Sur-la-Sorghe in Provence, France, which is essentially surrounded by

WAS-H OFFICE

1601 W. Alabama at Mandell

Open Tuesday – Saturday

10:00am – 3:00pm

For information, please
contact:

Martin Butler, Administrative

Assistant 713-942-9966

www.watercolorhouston.org

email: was-h@sbcglobal.net

Washrag Newsletter INFO:

DEADLINE for copy, photographs, and advertising for the Washrag is 4:00pm, the 5th of each month except June and December. Material not received by the deadline will appear in the next month's Washrag. Please submit items via email or in person at the WAS-H office noted above.

ADVERTISING RATES:

Full page...7.5" by 10" \$75

Half page...7.5" by 4.7" \$50

Quarter page...3.7"x 4.7" \$25

One column...30 words \$15

Area Teachers Listing \$25/

yr.

Column ads should be typed.

All other ads must be print-ready.

Photos must be 300 dpi.

Submit material to:

k_haleybowen@gmail.com

Wednesday Model Session



The Wednesday Model Session group will continue to meet every Wednesday, 12:30pm – 3:30pm (unless there is a workshop scheduled) at WAS-H. Please email me Rensink.art@att.net and I will let you know the model each week before the session. So y'all come with your drawing and painting gear and do your own thing for three quiet hours of model time. It is a wonderful opportunity. Monitor: Carol Rensink, 713-299-4136 or wedwash@gmail.com

November 2017 Events Calendar

November 3 Pick-Up October Paintings **November 12** Demo/General Meeting**November 4** Take-in for monthly exhibit (1:30 p.m. socialize, 2:00 p.m. start)
10:00 a.m. - 12:00 p.m.**November 11** Paint-in 9:30 a.m.-3:30 p.m. **November 12** Reception 3:30 p.m. – 5:30 p.m.**November 28** Paint-out

Donate to WAS-H

Randall's offer 1% of your purchase with their Good Neighbor Program. Register at the courtesy booth with WAS-H's ID #4553. Every time you use your Randall's Remarkable Card, WAS-H will receive a credit.

Amazon donates \$.05 to WAS-H for every \$10 you spend! When shopping online, click SMILEAMAZON.COM

Member Teachers Listing

Sallie Anderson Studio, 409-763-2265
Sallie Anderson Fine Arts.com
Galveston

Diana Brandt, Memorial, Houston
Beginners to Intermediate,
713-560-2324
watercolor70131@yahoo.com

Peihong Endris, WAS-H, 713-206-3668
Chinese Brush Painting
Peihong1512@gmail.com

Carla Gauthier, NWS, 281-384-2473,
League City, Carla.gauthier@yahoo.com

Susan Giannantonio, Katy, TX &
Mayville, NY lucholiz@gmail.com,
www.susangiannantonio.com

Caroline Graham, WAS-H,
713-664-6589, Museum District,
crahamart@hotmail.com

Janet Hassinger, 409-457-4527,
Galveston
www.janethassinger.com

Joanie Hughes, WAS-H
Beginner Watercolor
713-426-6767
joan-hughes@comcast.net

Gay Paratore, BA, MEd, NWS,
NSA, TWS, WAS-H, 409-316-1005,
NSArtists.org
Butler and Woodlawn Museums &
Studio

Carol Rensink, WAS-H
Figure Drawing & Anatomy
713-299-4136, crensink.art@att.net

Mary Rustay, WAS-H, 713-703-1533
Watercolor for Seniors

Mary Wilbanks, NWS, WHS, WAS-H
Workshops & Critiques, 281-370-7879
marywilbanks@gmail.com

SpeedyPrinting
3433 West Alabama, Suite C, Houston, TX 77027
713.877.8466 Facsimile 713.877.8557
craig@speedypainting.net



From the President

Greetings,

November is one of my favorite months, with cooler days, fall colors, and of course all the holiday “comfort foods”. My latest favorite comfort food is Helen Corbitt’s “Texas Corn Muffins”, which Terry Baird instructed me to add some green chilies. Can you say “YUM”!!! And, I also look forward to painting plein air without having to worry that my sweat droplets will cause unwanted “blooms” in my picture.

Last month my husband and I took a trip to Santa Fe, NM and visited Kasha-Katuwe Tent Rocks National Monument, with the goal of painting the “hoodoos”. Hoodoos are cone-shaped tent rock formations, imbedded with pyroclasts that were blasted down slopes in an avalanche called “pyroclastic flows” (can you tell I’ve been married to a geologist for 41 years)! I also can throw around another geologic term, “reverse thrust”... but that’s a story for another day. Anyway, as all of you who have painted plein air know, everyone and anyone will stop and ask you questions. Well, several people asked me to put them in what I was painting. I finally thought up a brilliant, or so I thought, answer. I said, “Of course, but I only paint nudes” – which is mostly true. Well, the expressions on their faces were priceless!

We just finished our very successful Annual Members Exhibition, with 87 artists submitting 153 paintings, of which 87 were accepted into the show. **Michael Reardon**, our juror, demo and major workshop artists was a delight to work with during the week. I’d like to give a “shout out” to **Karen Capper**, AME chair, **Laura McMahon**, VP and “Uber” coordinator for Michael Reardon’s over all schedule, **Fran Franklin**, Membership Co-Chair who hung the show and put together special badges, honoring our past-presidents, **Donna Rybiski** and team who worked on the reception, **Emily Wahl**, workshop coordinator, and **Karen Stopnicki** who graciously offered the use of her home for a board and workshop pot-luck welcoming Michael Reardon.

When you stop by WAS-H, please note our new front door signage, courtesy of **Frank Griffin**, Building and Grounds, and **Laura McMahon**, VP. We also now have new external signage, thanks to **Mark Stewart**, Public Relations. Mark deserves a huge round of applause for navigating the City of Houston’s bureaucracy to obtain permits.

Upcoming is our December “The Spirit of the Season” (Small Paintings) show, a great opportunity to shop for holiday gifts. And now that we have the “thingy” or should I say, a wireless credit card reader, it’s even easier than ever to shop in the Gallery.

And as always, please let me know when we don’t meet your expectations, and when we do.

Best,

Louise H. Bateman, President

Celebrating New WAS-H Members of September ‘17

Melinda Branan
Denise Gilbert
Chloe Huffman
Carin Landeck

Nancy Moody
Mohsina Nawal
Diane Osan
Barbara Pajak

Donna Scrudder
Jean Works

2017 AME Workshop With Michael Reardon

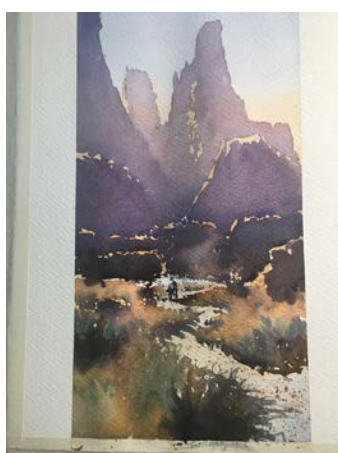
"Following the Bead..."

By Laura McMahon, Vice President

Twenty-four of us had a fabulous week painting with our Major Workshop guest artist, Michael Reardon, as we worked with his limited palette, started our own paintings with an underpainting and then worked on "following the bead" from the top of the paper down as we worked wet-in-wet and tried to finish our paintings in one sitting. Whew!

Michael had a theme for each of the five days: greens, focal point, composition, water and cityscapes. He painted a demo first thing each morning that reflected the theme, working quickly, usually finishing in no more than an hour and a half. He then worked with each of us individually to make suggestions as we chose our own reference photo, cropping or otherwise adjusting it to be useful as subject matter for a painting. Michael was great at moving among the students, giving individual instruction as we painted, tailoring his comments and suggestions to each participant's level of expertise.

Instructor and students had a fantastic time painting, collaborating, learning, supporting others and critiquing each day's work.



A few of Michael's demo pieces



When Beverly Aderholt called out for assistance from Michael, she had three Michaels respond - Mike Doan, Michael Boykin and Michael Reardon!!!



Critique at the end of the day



Michael doing a demo at the workshop

Monthly Gallery Show Themes

November 2017 - General

December 2017 - Small Paintings: In the Spirit of the Season

January 2018 - To Begin Again

February 2018 - The Magic and Mystery of

the Southwest

March 2018 - 41st International Watermedia Exhibition

April 2018 - General

May 2018 - General

November Featured Demo Artist

Painting on Claybord

by Laura J. McMahon, Vice-President

Award winning watercolor artist, **Daniela Werneck**, will be our November WAS-H "Featured Demo Artist" at our next General Meeting on November 12, 2017. Many of you know Daniela's work on Claybord, particularly her beautiful portraits of children. I have a piece of Claybord in my supply closet beckoning me, so I am excited that Daniela will be showing us techniques for painting on this unique surface.



Please join us on November 12, 2017 for our General Meeting. Our social begins at 1:30 p.m., the meeting starts at 2:00, and Daniela will begin the demo at 2:15 p.m. Following the demo, at 3:30 p.m., we will move to the Gallery for the awards presentation and reception for the November Monthly Exhibit.

Art on "The Go"

By Jan McNeill, WAS-H Historian

How does a week of painting in picturesque Maine sound? **Beverly Aderholt** and I can attest it is pretty fine! We were fortunate to be invited by fellow WAS-H member **Kathleen Church** to stay at her charming cabin near Damariscotta Maine.

In addition to painting plein air with each other, we also joined two plein air groups that week. The plein air groups each meet once a week in various beautiful locations. They paint from 9:00 a.m. to 11:30 a.m. and then gather for a group viewing and gentle critique. Each group was fun to meet and very welcoming.

Nothing beats painting on location. The sounds and smells further enhance the scenery that only the human eye can fully capture.

I encourage you to seek out plein air painting! What an enjoyable way to spend a little time.

There is now a "Plein Air" magazine that is full of exciting news (6 issues/yr) of various plein air events and gorgeous inspiring paintings. Plein air tips abound from various artists. It was in this magazine that I learned that "plein air is the new golf!" I have never golfed but I do love painting plein air and you will too!!



Kathleen Church painting plein air in Maine



Plein air painting of Pemaquid Point Lighthouse by Jan McNeill



Beverly Aderholt enjoying fresh lobster in Maine

November 2017 Paint-In

with Ksenia Annis: Fast Figure Sketching

Saturday, November 11, 2017

9:00-9:30 a.m. setup by attendees

9:30 a.m. -3:00 p.m. class – lecture, demo, and painting

3:00-3:30 p.m. cleanup

Contact: Jan McNeill jan.mcneill@att.net or David Muegge 713-645-8711.

Timid about sketching the figure? Come to this Paint-in with Ksenia Annis for tips and practice. Originally from Russia, Ksenia is a very talented, professionally trained artist and WAS-H's website director.

The goal of this session is to teach students to sketch the human figure in 20 minutes or less. The class will start with Ksenia giving a demo sketching a live model. Then participants will try various aspects of her sketching technique. Artists will be encouraged to work quickly and to experiment with various sketching materials and substrates.

The lesson plan will include seeing the whole, seeing relationships, filling in darks, softening and unifying, and refining the drawing and composition. Note: a live model fee of \$5 per participant will be collected

List of materials will be sent in the confirmation email after registration.



November 2017 Paint-Out

GALVESTON PAINTOUT AND EARLY SUPPER ON SATURDAY, NOVEMBER 18TH - YOU WONT WANT TO MISS IT!

By Mary Glover Rustay, Paint-Out Charman

Ahoy, Maties! Grab your hat and sunscreen and put your sea legs on, and take a fall drive down to Galveston's scenic and historic harbor in the historic Strand seaport area. On Wharf Drive near Pier 21 on the north side of the island and the Strand, you will find bait shops, restaurants, the 1877 tall ship Elissa docked next to Fisherman's Wharf Restaurant, shrimp boats, fishing boats for hire and tour boats!

For those who bring a non-painter with them, there are museums (Texas Seaport Museum, Oceanstar Offshore Rig Museum, and the Pier 21 Theater) and all kinds of things to see on the Strand! For painters there are vistas everywhere you look, from the Elissa, to the various boats and ships, seagulls, paintable people, the scenic bait shops, signage everywhere, and the boats coming through the channel. Then there is the Strand, the "mile of smiles" which has old Galveston architecture and horse-drawn carriages and you name it, you'll see it! There is the famous Galvez Hotel, the fishing pier, the beach, and the seawall full of colorful characters! Not to mention the historic homes near Broadway! I'm getting excited already.

If you want to come and join us, plan to meet at Pier 21 between 8:30-9 AM on Saturday, November 18th, and please let me know you are coming and to watch for you (713-703-1533—my cell). We can paint around the shrimp boats near Pier 21 on Harbor Drive during the morning, and grab some lunch, and then paint some more or change locations. Those who want to can meet around 4:00 or 4:30 p.m. for an early supper of some seafood at Fisherman's Wharf or Gaido's! YUM!!! Bring your stool or chair, your easel or cart to place your board and paper on, your paints, and something to put your paint palette and water on. Let's hope for beautiful weather and keeper paintings!!! Don't forget your cameras!!! SOUNDS REFRESHINGLY FUN AND DELICIOUS!!! Parking is available in front of the bait shops, boats, and in front of Pier 21 restaurants. Some is pay parking and some is free. The Strand has parking lots and some street parking here and there.

See you soon!

Enjoyment at the October Paint-In!



by Jan McNeill, WAS-H Historian

The October Paintin, led by Robert Ruhmann, focused on rocks and landscapes. Twenty attendees enjoying learning from Robert and then having a chance to apply their learnings!

Several attendees had homes which flooded during the recent Hurricane Harvey. Thus they especially enjoyed a chance to get back to painting. We were glad to see them.

Robert Ruhmann with (from left) Julie Jensen, Adele Raber, Nancy Moody, Li Ling Chou

Splash

Jan Ledbetter AWS, NWS, WAS-H has been awarded Best Of Show in the Rocky Mountain National Watermedia Exhibition 2017 for her painting The Maya of Chichicastenango # 192. Judge Stephen Quiller.

Congratulations, Jan!



New Sign at WAS-H!



By Laura McMahon, Vice President

We now have exterior signage outside our building at the corner of West Alabama and Mandel. A big thanks to **Mark Stewart** who had the idea and saw it through from beginning to end. The sign can be changed as frequently as desired. Our debut was for the 2017 Annual Members Exhibit.

Condolences

Long time dedicated WAS-H member, **Marjorie Mae Shepherd Brichler**, passed away on October 15, 2017 in Austin Texas. Moving to the greater Houston area in the 1960's, Marjorie taught private art classes and specialized in portraits and other commissions. She displayed her work in galleries, shows and exhibits throughout the country where she won numerous awards. She was at ease painting and teaching in all media and subject matter, including watercolor, oil, charcoal, pastel, acrylic, pencil, pen and ink, and most recently, combining physical art with digital techniques. The light, color and beauty which Margie created in this world will surely shine with her into the next. WAS-H is very fortunate to have one of Marjorie's paintings as part of our permanent collection.

Please join in remembering Margie by visiting her Memorial at www.cookwaldenchapelofthehills.com. Through this site, you can share your thoughts and fond memories with her family. Marjorie's family is suggesting that those who wish to make charitable contributions in her memory consider WAS-H.

Wine Down Wednesdays

Do you want to make art, but don't have the appropriate studio space to create in peace? Join WAS-H on Nov. 15, 2017 and/or Dec. 13, 2017 for a new reoccurring event, Wine Down Wednesday and use our studio space for free, while sipping on wine! This monthly event is free and open to the public.

Once a month on a Wednesday from 6-9pm, the WAS-H upstairs studio will be open for you to make art. Enjoy our three flat-screen TV's, LED lighting, long work tables and chairs, and air condition. Parking is available on site. A working kitchen and wifi are available.

Winter 2017 dates:

Nov 15, 2017 6-9pm

Dec 13, 2017 6-9pm

Bring your art supplies, a bottle of wine, your friends, and make art together! Together we can think creatively, explore artful conversation and ideas, find empowerment through art, and grow a blossoming community.

Save your spot online at www.watercolorhouston.org

Email **Haley Bowen** at khaleybowen@gmail.com for questions and/or more information. Please sign up at <https://watercolorhouston.org/event-2690935>

*Art projects are chosen by the artist. WAS-H does not provide materials or wine. Alcohol limited to wine and beer.

**Materials limited to watermedia such as watercolor, gesso, acrylic, and also, collage, pastels, and drawing materials. We will not provide space for clay, oil paint, any industrial works, or installation work (or any other work that is potentially harmful to our tables, floors, and/or disruptive).

Volunteer of the Month



"Diligent, dependable, intuitive, conscientious" are just some of the commendable adjectives used to describe Outreach Interim Director **Alexandra "Alex" Tyson**.

This month, WAS-H is recognizing Alex as Volunteer of the Month for her dedicated work directing and monitoring weekly watercolor painting sessions with children at Texas Children's Hospital, among other chores. Volunteers provide the children a break from the stressful medical care experience by providing time and materials to paint and enjoy making art with watercolors.

Our honoree is the perfect embodiment of the old saying: "If you want something done, ask a busy person to do it." Alex is a real estate agent with more than 35 years experience. After 18 years in the business, she founded Alex Tyson Properties in 2000, specializing in properties in-side the loop. A Houston native, Alex graduated from Duke University with a degree in art and art history. She was a medical artist for five years before starting a career in real estate.

"She is my rock," present Outreach Director Anna Griffith said. "She can get tasks done almost in the time it takes to say them." WAS-H's outreach programs also include an Art for Seniors paint-in each week and soon a "millennial" painting program, titled "Wine Down Wednesdays." WAS-H also outreaches to high school students through a senior college scholarship award and two awards to junior students of Houston's High School for Visual and Performing Arts. In addition, members judge and volunteer for exhibitions, performance demonstrations and instruction in schools, colleges, hospitals and community centers.

WAS-H applauds Alex for all her work and outstanding example of the volunteer efforts that WAS-H members make for the benefit of Houston.

Volunteer for Beacon

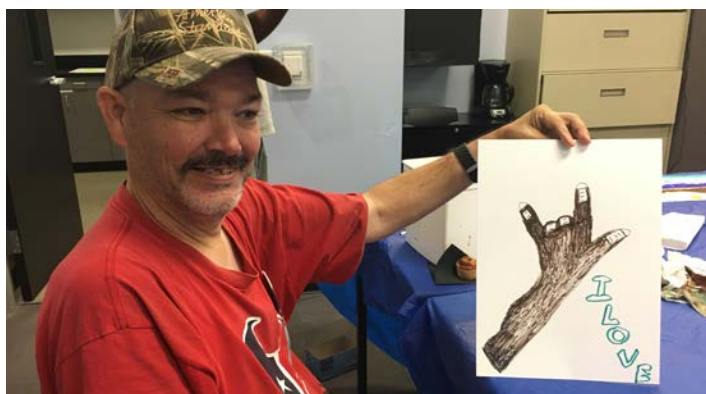
WAS-H's Development Director, **Haley Bowen** has been volunteering with the Beacon for over a year leading their art program. A few times a month, The Beacon's homeless clientele gather for this art class. The Beacon is a homeless services center in Downtown Houston. They offer housing assistance, pro bono law, identity services, showers, foods, laundry and much more to the homeless population of Houston.

At The Beacon on Sundays, clients wait for their services in the morning before 11am lunch. However, lots of this time is spent waiting in line. Haley Bowen has partnered with the Beacon on behalf of WAS-H to provide an art class while the clients wait for their services.

Once the clients are gathered and seated, Haley leads the session with a small historical conversation about the focus for the hour and a half session. Clients are treated to coffee and homemade pastries while they paint.

The painting is very open to the client's imagination, and it is a therapeutic space for the clients to enjoy. Haley is looking for volunteers to help monitor the space, set up, clean up, and offer artful advice to homeless artists.

To participate or for more information, email Haley at khaleybowen@gmail.com



Become a Classroom Monitor

by Laurie Hammon, Education Co-Director



A new benefit for students and teachers was approved by the WAS-H board on October 2. One attendee per class could have a 50% reduction in tuition by serving as the Class Monitor.

This person would need to arrive a little early and stay after class, assisting the teacher with the audio-visual equipment, admitting students to class (if class begins outside of regular gallery hours), assisting as needed during class, and being in charge of the routine set up and cleanup before and after class. This will take a number of tasks from the teachers, who will have more time to concentrate on teaching. However, some teachers like to handle these tasks themselves and so not every class will need a monitor. To become a monitor you will need to attend a short training class to learn to use the AV equipment and be briefed on other duties in order to be added to the list and receive the code used to register for classes at half price. Our first training for monitors will be on **Saturday, December 2**.

Look for this opportunity to begin with the new semester in January.

Painting Through Adversity

By Carla Gauthier, WAS-H teacher

The human existence is one of ebb and flow, joy and sorrow, ease and difficulty, and for an artist, there are often artistic droughts during times of adversity. We can't concentrate, we can't put our art ahead of more pressing concerns, and often, such a trivial pursuit doesn't seem important when there is upheaval in our lives. If we do take time to make art, often the distraction of what weighs so heavy, can make our paintings less interesting, less focused, less successful. The easiest thing is to give up altogether, at least for the time being, until things get back to normal.

Sometimes we get back to it, and sometimes, we let go altogether....

But as artists, art is more than a hobby, a distraction, a way to pass the time. It is a way to express emotion and it is a way to escape and, also, to heal. It is our therapy, where something makes sense in a chaotic world. And it is a way to put something positive out into the world, when there is so much negative.

How to find a way back...

- Start small – a sketchbook, small paper, simple subject matter if you have reservations
- Keep it simple – a few colors, work with ones you know well so that there are few surprises
- Allow colors to flow, mingle, enjoy the paint as it moves, without stressing about how it looks
- Try a subject that is familiar, that is peaceful and soothing
- Take the time to free your mind, and access your creative side, find time to escape your worries
- Consider painting something that symbolizes what is heavy on your mind. Not the actual object, but something that represents the person, the problem, the relationship, the hardship, the weight of the worrisome issue
- This could be a window, a flower, a landscape, a bird, a word, a color, a sky filled with clouds, a key, anything you imagine to be a symbol of your problem
- Turn off all television, music with lyrics, radio, anything with words that will pull your brain back to the left side
- Paint with some abandon – this is not about something replicating a photo, but a memory, or a sense of time or place, or a sense of light, or even nothing in particular
- Meditate on things that are positive – mantras that are uplifting, at least one should apply...
 - o This too shall pass
 - o Keep Calm and Carry On
 - o Make It Work
 - o Don't Cry because it is over, Smile because it happened
 - o Tomorrow is Another Day
 - o I will accept the things I cannot change
- Our creative side comes from the right side of our brain, which deals with feelings, relationships, insight, intuition, beliefs and possibilities, holistic views, the big picture, so many things that our dominant left brains cannot access. When we look at this logically, we need our left brains accessed to see our way through emotional turmoil, to access peace and find answers. It can be a way, especially for artists, to find calm in a world that is anything but.
- Don't judge your finished painting too harshly. You might be working more intuitively, more freely, enjoying the process rather than focusing on the product.

Donation Thank You

A big thank you to **Leslie Wolf** who donated a wood, stand-up easel for our upstairs studio, **Alison Hendry** for an electric kettle and **Jan Shrader** a full size skeleton for use in our figure drawing classes. I will now be able to sip hot tea, at a stand up easel, while learning how to sketch the human figure.....THANK YOU all for your generous donations!

Oh, By the Way....

By Tom Kraycirik, International Watermedia Exhibition Director

The International Watermedia Exhibition (IWE) “call for entry” that opened in September can be an opportunity for an interesting conversation with friends that leads to WAS-H support.

Begin by asking, “Oh, by the way... Do you know the community relations manager for your company?”

Ask the question and say no more. Typically, you will get a “Why do you ask?” response. You can simply say that the Watercolor Art Society - Houston (WAS-H) is preparing for its 41st annual International Watermedia Exhibition and would like to offer your company a sponsorship opportunity.

Finding prospects for IWE sponsorship begins that simply. That simple question and explanation, more often than not, leads to an enjoyable conversation and possibly additional support for WAS-H. Most companies have funds earmarked for charitable and community programs. They are looking for opportunities to use their funds.

Your friend may not know the community relations manager but perhaps can easily find the appropriate name. Contact WAS-H with the manager’s name and the company, large or small, and the sponsorship team will follow up with a presentation.

The IWE call for entry can be found at CaFE’s website: https://www.callforentry.org/festivals_unique_info.php?ID=4708

Access to the entry system is also available through the WAS-H website, “watercolorhouston.org”, under “exhibitions”. Choose “international exhibition” and follow the trail from there.

This year, WAS-H is seeking corporate sponsors to make significant subscriptions to the exhibition. The show offers opportunities for companies to ally themselves with efforts to enrich the Houston community with watermedia art.

Ralph Waldo Emerson wrote, “Every artist was first an amateur.” WAS-H promotes the creation of art by a community of artists ranging from beginning amateurs to professionals and teachers. It is a cross section of watermedia enthusiasts dedicated to perfecting their own art and, also, increasing the pool of those wishing to experience the creation and enjoyment of watermedia art. Unlike many museum collections, our works are created by living artists. WAS-H is an incubator for artists creating works to be found in tomorrow’s museums.

WAS-H has more than 700 members from all over the Houston area. They interact with many of the same companies that are searching for appropriate venues to participate in the arts. They may be large established companies or start-up companies that other arts organizations may have missed.

The goal of the directors of the International Watermedia Exhibition and other WAS-H activities is to introduce WAS-H to these companies and seek their support. The ultimate mission of WAS-H is to enrich the Houston community through the appreciation and creation of art through watermedia materials.

Members can assist in those goals by adding a simple “Oh, by the way...” to their everyday conversations.

IWE Submissions Are Open

We’re live! WAS-H’s 41st Annual International Watermedia Exhibition (IWE) Call for Entry online jurying system is now live, and open for submission. The IWE is one of WAS-H’s largest premier art exhibition and an event that connects artists from all over the world.

Join the community of global watermedia artists and submit your work today!

The online call is open until 11:59:59pm on Friday January 12, 2018 MST.

More information and link to submit portfolio can be found here: https://www.callforentry.org/festivals_unique_info.php?ID=4708

Email khaleybowen@gmail.com for more information.

December Prospectus

Theme: Small Paintings: In the Spirit of the Season

Take-In: Saturday, December 2, 2017, 10 am - 12 pm

*(Paintings may be brought in BEFORE Saturday during regular gallery hours:
from 10:00 am to 3:00 pm Tuesday through Friday)*

Reception/Holiday Party: Sunday, December 3, 3:30 - 5:30 pm

Pick up paintings : Friday, January 5, 2018, 10 am - 3 pm

Questions: Kathleen Church, kechurch@mac.com,
713-702-0018

The December show "In the Spirit of the Season" will jump start us into the holidays and get our creative juices flowing.

Remember, the season is much more than gifts and Santa. It is also about LIGHT FILLING THE DARKNESS, waiting and hoping, and for the Jewish people Hanukkah, the Festival of Lights that is a celebration of joy. Entries will be judged on their creative expression of this special season.

Eligibility and Requirements:

Artist must be a current WAS-H member.

- Up to five entries per artist.
- Fee of \$5 per entry.

Artwork Regulations:

• *Water soluble media*

At least 80% water media: watercolor, acrylic, gouache, egg tempera, casein, ink.

• *Surfaces*

Paper, Yupo, Clayboard or Gessobord (with or without cradle), paper based board (illustration or art board), canvas is NOT accepted (except in Experimental Show).

• *Originality*

- Photo references allowed:
 - permission granted photos taken by others
 - photos no longer copyright protected
 - purchased photos
- NOT painted from another's painting
- NOT painted under supervision or from teaching DVD or book (except Student Exhibit.)
- NOT won in any monthly exhibit or accepted in AME or IWE exhibit
- NOT repainted from winning image
- Only original artwork (no giclees, copies, etc.)

• *Collage*

Allowed as long as water media is the dominant element, No restrictions on collage source (i.e. Fabric allowed, commercial papers, photos, etc.).

• *Enhancement Media*

Less than 20% watercolor pencils, pastels, wax accents/resists, charcoal, graphite, metallic water based paint, water based iridescent paints.

Pricing

- Paintings will have sales tax added at time of sale.
- Can be for sale or NFS (not for sale).
- Gallery commission of 20% and 5% charge for credit card sales.

• *Matting and Framing Regulations*

- Must be framed. Only exception is Claybord or Gessobord wood cradle panels.
- No restrictions on frame style or width of edge.
- Any color mat and liner (if used).
- Frame must be strung with wire for hanging. No other hangers.
- All submissions must be protected by glass or Plexiglas except for Claybord and Gessobord.
- No varnished paintings.
- Size not to exceed 16" in height or width, frame included.

• *Unclothed figure*

- Yes.
- WAS-H reserves the right to refuse entries that are obscene, controversial, or in bad taste.

• *Awards*

- Cash Awards for 1st place -\$100, 2nd-\$75 and 3rd-\$50.
- Honorable Mentions awarded a ribbon - no cash.
- Only one award per artist.
- Winners are notified by phone and/or email.

• *Regulation*

- Paintings sold during exhibit may be taken by purchaser at any time. Other paintings must remain in the gallery for the entire length of exhibit.
- Any artist or designated agent removing unsold paintings prior to the end of the show is subject to a penalty.

• *Liability*

- WAS-H will not be liable for damage before, during or after the exhibit.
- Artwork that adheres to these guidelines will be accepted with the provision that WAS-H reserves the right to reject any entry that is controversial, obscene or in bad taste.

• *Abbreviations*

Medium: WC-Watercolor, A-Acrylic, G-Gouache
Surface: P-Paper, YP-Yupo, CB-Claybord, GB - Gessobord

*Please read the prospectus carefully, as this show's framing regulations
and certain other requirements are atypical*

Registration Form (NOTE: Each painting MUST be titled).

Take-In: Saturday, December 2, 2017, 10 am - 12 pm

(Paintings may be brought in BEFORE Saturday during regular gallery hours:
from 10:00 am to 3:00 pm Tuesday through Friday)

Reception/Holiday Party: Sunday, December 3, 3:30 - 5:30 pm

Pick up paintings : Friday, January 5, 2018, 10 am - 3 pm

Questions: Kathleen Church, kechurch@mac.com,
713-702-0018

Name _____

Email _____

Tel. (H) _____ (C) _____

Title #1 - - - - -

Price _____ Medium _____ Surface _____

Title #2 - - - - -

Price _____ Medium _____ Surface _____

Title #3 - - - - -

Price _____ Medium _____ Surface _____

Title #4 - - - - -

Price _____ Medium _____ Surface _____

Title #5 - - - - -

Price _____ Medium _____ Surface _____

I grant WAS-H permission to reproduce the artwork for publicity, documentary, or educational purposes. I accept the terms of the prospectus and confirm that the artwork meets the stated regulations.

SIGNATURE _____ **DATE** _____

Attach this label or a facsimile to the back of each painting.

Name _____

Tel. _____ Price _____

Title _____

Framed Size ____x____ Medium _____ Surface _____

Name _____

Tel. _____ Price _____

Title _____

Framed Size ____x____ Medium _____ Surface _____



A MONTHLY PUBLICATION OF THE

Watercolor Art Society - Houston

1601 W. Alabama at Mandell, Houston, TX 77006

713-942-9966 - www.watercolorhouston.org

NON PROFIT
ORGANIZATION
U.S.POSTAGE

PAID
HOUSTON, TEXAS
PERMIT NO. 2169

Quality Giclee Printing & Custom Framing



Canon iPF6400 Giclee 24" Printer

- ☺ Top quality Arches Paper
- ☺ Color Corrections with CS5 Photoshop
- ☺ No Minimum Order

Full Service Frame Shop

- ☺ Top quality Custom Frames and Mats
- ☺ 20% WAS-H Member Discount
- ☺ No Minimum Order

By Appointment Only - Call

Les McDonald, Jr.

2623 Stoney Brook Drive • Houston, TX 77063

(713) 977-4729

**We Offer a 20% DISCOUNT
To All WAS-H Members!**



**SUPPLY
ON MAIN**
2711 Main St.
Houston, TX
77002

If you need
more directions
Please call

ART SUPPLY
(713) 652-5028



email vikki: artsupply@swbell.net