

# Washrag

October 2016

N E W S L E T T E R

Watercolor Art Society - Houston

## What is a Paint-In at WAS-H?

Margaret Bock, *Paint-In*  
Co-Coordinator

WAS-H Members have a most wonderful opportunity to experience different approaches and techniques of painting. From September through July every 2nd Saturday, WAS-H hosts teacher led painting sessions with WAS-H members or "WAS-H" persons of interest" leading the class. The leader shares his or her particular "style" to painting with water media.

The leader is chosen according to his or her particular style, be it realism, impressionism, the abstract, experimental, collage, or mixed media. The morning session will have the leader provide a demonstration of his or her technique. WAS-H is blessed to have three magnificent video screens on which the class can view the artist while in the process



of painting. Each participant can actually see every stroke, choice of paint, and design decision.

Following the demonstration is a question and answer time, after which the class may set up their work area or take a lunch break. Most artists bring a lunch to get the most out of the day. A few snacks are provided to munch on during the day. The afternoon offers painting time for the participants to experiment with the new ideas and con-

cepts demonstrated in the morning. Any questions for the leader should be taken up to the front, as the leader cannot make rounds to everyone in the short afternoon period. This way one's question can benefit all present.

The Paint-Ins have proven to be very popular. The charge per Paint-In is \$30.00. Online registration is available as well as advisable. Hope to see you at the next session on September 10, from 9:00 am to 3:30 pm.



### October Events Calendar

**Board Meeting** – Oct. 3, 9:30 am

**AME Show Take-In** – Oct. 6 & 7, 10 am - 3 pm

**General Meeting** – Oct. 9, 1:30 pm

**Presentation** by Mary Whyte

**AME Awards Reception** – Oct. 9, 4-6 pm

**Paint-In** – Oct. 15 9 am - 3:30 pm  
Mohammad Ali Bhatta

**Paint-Out** – Oct. 15, 9:30 am - 3:30 pm

**Wednesday Model Lab** – 12:30 - 3:30 pm, (no lab on Oct. 12)

**Open Studio** – Fridays, 10:00 am - 2:00 pm (when no workshops are scheduled)



## WAS-H OFFICE

1601 West Alabama at Mandell  
Open Tuesday–Saturday  
10:00 am to 3:00 pm.  
For information please contact:  
Martin Butler, Administrative Assistant  
713-942-9966  
[www.watercolorhouston.org](http://www.watercolorhouston.org)  
email: [was-h@sbcglobal.net](mailto:was-h@sbcglobal.net)

## WASHRAG INFORMATION

DEADLINE for copy, photographs and advertising for the *Washrag* is 4:00 pm, the 5th of each month except June and December. Material not received by the deadline will appear in the next month's *Washrag*. Please submit items via email or typed.

## ADVERTISING RATES

Effective September 2001

Full page (7.5" by 10") \$75

Half page (7.5" by 4.7") \$50

Quarter page (3.7" by 4.7") \$25

One column (30 words) \$15

Area Teachers Listing \$25 (per year)

Payments for *Washrag* ads must be received no later than the 10th. Please mail check to WAS-H.

Column ads should be typed. All other ads must be print-ready. Photos must be 300 dpi. Submit material to:

WAS-H 713-942-9966

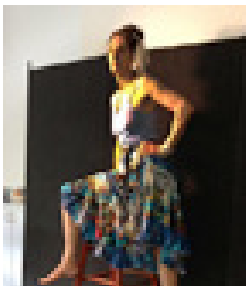
1601 West Alabama, Houston, TX 77006, or via email to Rosalie Ramsden, [ramsdendesign@earthlink.net](mailto:ramsdendesign@earthlink.net). Please put WAS-H in subject line of your email.

## Wednesday Model Session

The Wednesday Model Session group will continue to meet every Wednesday, 12:30-3:30 (unless there is a workshop scheduled) at WAS-H.

Please email me [crensink.art@att.net](mailto:crensink.art@att.net), and I will let you know the model each week before the session.

So y'all come with your drawing and painting gear and do your own thing for three quiet hours of model time. It is a wonderful opportunity. Carol Rensink, 713-299-4136



Recent model for Wednesday model lab group



2 October 2016

## Next General Meeting Oct. 9 Social 1:30, Meeting 2:00 Presentation by Mary Whyte

## Mary Whyte – October Featured Artist

by Louise H. Bateman, Vice-President

Our October General Meeting Featured Artist is Mary Whyte. Whyte is a teacher and author whose figurative watercolor paintings have earned international recognition. A resident of Johns Island, South Carolina, Whyte garners much of her inspiration from the Gullah descendants of coastal Carolina slaves who number among her most prominent subjects. In 2003, Whyte's paintings of her Gullah friends culminated in a museum exhibition and book called *Alfreda's World*. In 2011, Whyte's groundbreaking exhibition, *Working South*, opened with 50 works at the Greenville County Museum of Art in South Carolina. Four additional museums signed on to exhibit the large-scale, sensitively rendered watercolors depicting blue-collar workers in industries vanishing throughout the south. Whyte's unrivaled mastery of the watercolor medium, along with this exhibition, was featured on CBS Sunday Morning. Her book, *Working South*, reverences each painting and sketch with background stories of the southern people and places beautifully portrayed within the exhibition.

*Down Bohicket Road*, released November 2012, is her comprehensive book of paintings completed over a 20-year period on Johns Island. It is a rich, visual tribute to friendship that crosses cultural and racial borders and reaches straight to the heart.

Whyte was one of 10 watercolor artists of the world invited to the China and Foreign Countries International Watercolour Summit at the Nanning Art Gallery in Nanning China, October 2013. Simultaneously, The Butler Institute of American Art showcased 20 of Whyte's major works in a solo exhibition named after her recently released biography titled *More Than A Likeness, The Enduring Art of Mary Whyte*, written by Martha R. Severens and published by University of South Carolina Press.

In November 2013 Whyte was featured in a solo exhibition at the National Arts Club in New York City. This exhibition was extended due to the overwhelming positive public response. Her overseas exhibition included The World Watermedia Exposition in Thailand, 2014. Most recently, Whyte's solo exhibition of 20 paintings, *A Portrait of Us*, toured the Mennello Museum of American Art in Orlando, Florida, and also the ArtCenter Manatee, Bradenton. Florida, November 2015 through February 2016.

*Beginner*, and *An Artist's Way of Seeing*. She continues to teach watercolor nationwide and in Europe.

Please mark your calendars to join us for this Lecture/Slide Show on Sunday, October 9, from 2:00 to 3:30 pm.



## From the President

by Lynne Woods, President

Dear WAS-H Members,

I just came in from plein air painting the banana tree in my backyard.

Every winter my banana tree dies back to the ground, its ragged brown tattered leaves rustling in the wind. In early spring I begin scouting for banana tree “pups,” the little green and maroon shoots that signal new life.

If I'm very lucky, by mid-summer one of those shoots may produce a pendulous rose-purple banana bud. The petals curl back slowly, one by one, each revealing a row of tiny yellow blossoms. If the bees find these blossoms, if the weather stays warm, if there is enough rain, by September I will have a long stalk of tiny green bananas.

You cannot imagine how much this tenuous process of life thrills me. And I don't even eat bananas!

For several years now, I have been saying to myself, “I really want to start to paint en plein air,” but something has always held me back — too hot in Texas, too many mosquitoes, not enough time, not the right equipment.

Then in August I went to a fabulous nine-day workshop with Stephen Quiller in Creede, Colorado. We spent three whole days sitting in the mountain meadows painting en plein air.

So beautiful. So peaceful. So calming. Like prayer.

Today back at home was my first day to paint. I grabbed my palette and a chair, opened the back door, took 10 steps, and sat down in front of a pendulous pink and purple, maroon and magenta, orange and opal, green and glowing, shimmering and shining beautiful banana blossom. And I painted.

Peace and joy,

Lynne

P.S. Just a reminder that Stephen Quiller will be the juror for our International Exhibition next March. Registration for his 5-day workshop will open both online and in person at WAS-H on Saturday, October 15, at 10:30 am.

## The Beauty of Figure Drawing

by Louise H. Bateman, Vice-President

Carol Rensink, WAS-H's figure drawing instructor, was the Featured Demo Artist at the September 11, 2016 General Meeting. Over 50 attendees were treated to a demonstration of Carol sketching several beautiful figures in less than 15 minutes per pose. The session was enhanced by having a live model “Catherine,” who was able to strike the

(continued on page 7



## Member Teachers Listing

### Sallie Anderson Studio

Galveston, 409-763-2265

**Diana Brandt**, Memorial, Houston  
Beginners to Intermediate, 713-560-2324  
[watercolor70131@yahoo.com](mailto:watercolor70131@yahoo.com)

### Barbara Jeffery Clay, AWS

116 Huckleberry Dr.  
Lake Jackson, TX 77566, 979-292-8058

**Susan Giannantonio**, Katy, TX, and  
Mayville, NY, [lucholiz@gmail.com](mailto:lucholiz@gmail.com),  
[www.susangiannantonio.com](http://www.susangiannantonio.com)

### Caroline Graham, WAS-H

Museum District  
713-664-6589, [cgrahamart@hotmail.com](mailto:cgrahamart@hotmail.com)

### Janet Hassinger, 409-457-4527

<http://www.janethassinger.com/>  
3526 Ave. S 1/2, Galveston, TX 77550

**Joanie Hughes**, WAS-H, Beginner  
Watercolor, 713-426-6767,  
[joan-hughes@comcast.net](mailto:joan-hughes@comcast.net)

**Gay Paratore, BA, MEd, NWS, NSA, TWS, WAS-H**, classes Tues. - Butler Longhorn Museum, Wed. - Santa Fe Studio, Aug. Acadia Workshop Center, 409-316-1005, [www.nsaltists.org](http://www.nsaltists.org)

### Carol Rensink, WAS-H

Figure Drawing & Anatomy  
713-299-4136, [crensink.art@att.net](mailto:crensink.art@att.net)

**Mary Rustay**, Cell 713-703-1533 Watercolor for seniors at WAS-H, no charge.

**A.J. Schexnayder, AWS, NWS, WAS-H**  
N.W. Houston, 281-444-7524  
[aj-schexnayder@att.net](mailto:aj-schexnayder@att.net)

**Shirley Sterling, NWS, TWS, WFS, WAS-H**  
Clear Lake, 281-474-4214



3433 West Alabama, Suite C, Houston, TX 77027  
713.877.8466 Facsimile 713.877.8557  
[craig@speedypainting.net](mailto:craig@speedypainting.net)

3 October 2016



# Saturday Paint-In

Margaret Bock and David Muegge, *Paint-In Co-Coordiators*

Thank you,  
Mark Stewart

# WAS-H Future Major Workshop Artists & Dates

# 47th Annual Members Exhibit for Current Members Only October 6 - November 3, 2016

# News About the WAS-H Website

by Karen Stopnicki, *Website Director*



Have fun creating an illustration of a portrait of three-dlimensional qualities with light and shade. Bring your own supplies brushes, paint and 140# water color paper.

## New Members

Janette Elbertson	Hiep Nguyen
Theresa Fraga	Joel Parkman
Ellen Garvin	Liz Reese
Dick Kantenberger	Joseph Synan
Lark Kaskie	Andrew Thomsen
Robin Krause	Susan Walrath
Wallis Larocque	Lu'Ana Whitmarsh
Terry Matthews	Jay Williams

## Splash

Jackie Liddell's painting *Barnacle Bill*, has been selected for publication in *Art Journey Animals: A Collection of Inspiring Contemporary Masterwork*. *Art Journey Animals* will showcase the best animal artwork. The book will be available in early January.



Opening the Paint-In season was Landscape artist Mark Stewart. Comraderie among attendees was high, and everyone was eager to experience the creation of a magical landscape under the tutiledge of Mark.

Images of the subject of the day were passed out and everyone was encouraged to create a sketch and to lay in an underpainting of items to be more fully developed later ... ie layering. Mark demonstrated his approach, then turned it over to the attendees to do their thing.

At the end of the day every was pleased to be going home with new, or revived, concepts of how to create a beautiful realist image Impressionistically painted.

Aside from having a happy painting experience, friendly relationships and exchanges were the order of the day. Thank you Mark for sharing your talent and friendship

— Margaret Bock, Paint-In Co Chair

**Mary Whyte**  
<http://www.marywhyte.com>  
October 10-12, 2016  
**Stephen Quiller**  
March 13-17 2017  
[www.quillergallery.com](http://www.quillergallery.com)  
**Michael Reardon**  
[www.mreardon.com](http://www.mreardon.com)  
October 9-13, 2017  
**Iain Stewart**  
<http://iainstew.fineartstudioonline.com>  
March 5-9, 2018

## Paint-In Calendar

October 15*	Mohammad Ali Bhatta
November 12	TBA
December	No Paint In
January 14	Nancy Stephensen
February 11	Mary Wilbanks
March 18	Janet Hastings
April 8	Eric Sprohge
May 1	Shirl Riccetti
June 16	TBA
July 8	TBA

\* *Third Saturday*

## Monthly Gallery Show Themes

### 2016

- October - Annual Members Exhibit
- November - General/No Theme
- December - Small Paintings

#### QUESTIONS:

- Chris Bunger, Gallery Co-Director  
• [ccbung@gmail.com](mailto:ccbung@gmail.com)  
• 713-501-8089  
Or  
• Diana Burke, Gallery Co-Director  
• [vdburke@gmail.com](mailto:vdburke@gmail.com)  
• 936-828-6453, 832-932-5603

by Denise Gowan, *Annual Members Exhibit Director*

We are excited for the 47th Annual Members Exhibit (AME) which will be held October 6 - November 3. We are hoping you will be submitting an entry, as well as, joining us for the AME artist presentation and awards reception.

The AME Prospectus has been included in this issue of the *Washrag*. As in past years, we will have over \$3000 in cash and merchandise prizes.

Our juror, Mary Whyte, is a teacher and author whose figurative paintings have earned national recognition. She is the author of many books, including *Painting Portraits & Figures in Watercolor* and *Watercolor for the Serious Beginner*. We are looking forward to the inspiration and knowledge Ms. Whyte will share with us as our juror and presenter.

**Mark your calendars with the following dates for the 47th Annual Members Exhibit:**

- Entries will be accepted from 10 am to 3 pm on Thursday, October 6, and Friday, October 7.

- Note: there will NOT be a Saturday drop-off for entries. Artists are welcome to follow the early drop-off procedures to submit entries prior to October 6. (Early drop-off procedures are posted in the WAS-H gallery.)

- Mary Whyte will give a presentation at the WAS-H Monthly Members Meeting on Sunday, October 9 at 2 pm.

- The AME Reception and Awards Presentation will immediately follow the Monthly Members Meeting from 4-6 pm on Sunday, October 9.

- The Annual Members Exhibit will be available for viewing in the WAS-H Gallery from October 9th through November 4th.

If you have any questions, please contact Denise Gowan at 713-392-1213 or at [denise.gowan13@gmail.com](mailto:denise.gowan13@gmail.com).

(continued from page 3)

beautiful poses, and not move a muscle “literally” while Carol captured the “essence and mood” of the moment.

Carol stated that drawing from models remains an essential part of her creative process. She feels that each drawing is an opportunity to capture the dynamic expression of that person at that moment in time. In her studio practice she currently prefers drawing and painting from her imagination, exploring her accumulated memories and sensibilities to create scenes that tell a story, describe a feeling, or emulate an experience. Her goal is to create a loaded moment in time with entwined meanings, which the viewer can then explore.

Carol also treated us to a slide show

of her various works. She stated that one of her favorite drawing tools is soft charcoal, but she also works with a Tombow brush pen and graphite crayons, to name a few others. Sometimes she will tone her paper with charcoal and “lift out” areas to be highlighted with a kneaded eraser or add highlights with a white Conte Crayon. Adding a “splash” of watercolor to some sketches further enhances her artwork.

## Condolences

We send our condolences to members Jan McNeill and Margaret McNeill, on the death of their father and husband George McNeill on August 20, 2016.

The WAS-H website ([www.watercolorhouston.org](http://www.watercolorhouston.org)) has so much to offer. You can view our full calendar of events, get information on special programs, renew your membership and enroll in classes. Our digital age makes all this easy access.

If you have not set up your log-in, see the instructions at the end of this article. It is important to note, that you can't use two different email addresses in our system. You must log-in with the email address we have on file for you. And then if you would like to change it, you can edit your profile. If you need help with this, feel free to email me at [kstopnicki@gmail.com](mailto:kstopnicki@gmail.com).

There are many benefits to logging in. You can renew your membership, easily register for classes and access the online member directory.

Check out our online calendar with all events. If you look at the Calendar of Events page under About Us, you can click on specific events for more information. A neat trick is that when you do this, you will see the words “Add to My Calendar” on the upper right. Click on that to download a file that will add the event to your Google, Yahoo or other online calendar.

### Instructions to set up log-in:

1. At the very top of the web page [www.watercolorhouston.org](http://www.watercolorhouston.org), find the Login button. It's above the logo on the right-hand side.
2. Click it and select “Forgot Password” in the next screen. Since we did not set default passwords, you will need to do this to set a password.
3. Enter the email address you provided WAS-H. This will send an email with a link to that email address.
4. Go to your email account, find the

(continued on page 6)



# Art on the Go

by shirl riccetti

## IT'S GETTING THERE

All traveling artists know the joy of arriving at an anticipated destination: What if getting there is part of the Art? This part may add to the creative experience.

Of course, arriving at a destination by airplane is, in theory, the fastest and most efficient way.

Artist Michael Mistic enjoys the lure and mystic of Train Travel. He has journeyed around the U.S. and Canada this way. Some of his trips have been “organized excursions,” but many have been due to his own research and detailed planning. With train stops that are overnight, or afford him many free hours, Michael researches the museums and galleries in the town.

The train trip itself gives Michael the relaxation and the continuous visual input of the moving and changing scenery. There have been trips when he combined different rail excursions and different trains.

Naomi Rosborough also enjoys the lure of train travel. Her train travels have taken her through European trips.

Cookie Wells has traveled enjoyably on packaged tours, but her preference is in visiting and sightseeing by car.

To intensify the adventure, many years ago, Nancy Fleagle had her RV shipped to Europe. Her dramatic times included parking and visiting many museums.

Some artists enjoy the luxury of the large ship cruises. Time aboard offers opportunities to paint, take classes, have sketch time, or to gear down and relax.

Personally, I have been on two river cruises. Initially, I was hesitant of the structure of the days. However, both times I filled almost an entire medium-sized sketch book. This was because I spent my “away time” on the top ship's

deck, as the boat ever so slowly glided the waters on this 123-passenger boat.

There are also the popular bus tours ... offering any type of trip, for any length.

The joy of walking, either around the neighborhood or tackling a major hike, is usually the most affordable mode of travel. It captures all of the senses, with emphasis on intake.

Whatever artists decide, each trip is a sensory gift or gifts. Each moment must be seized ... and be open to sneak a peak at another kind of new trip, something that hasn't been tackled before.

Any travel stories?

carpe diem

Shirl Riccetti      sriccetti@comcast.net

## New Members

Janette Elbertson  
Theresa Fraga  
Ellen Garvin  
Dick Kantenberg  
Lark Kaskie  
Robin Krause  
Wallis Larocque  
Terry Matthews  
Hiep Nguyen  
Joel Parkman  
Liz Reese  
Joseph Synan  
Andrew Thomsen  
Susan Walrath  
Lu'Ana Whitmarsh  
Jay Williams

## News About the WAS-H Website (continued)

(continued from page 5)

email that was sent and click on the link to set a new password.

5. The link will take you to a page on our website to set a new password.

6. Enter your new password.

7. Now log in with your email address and new password.

The WAS-H website (www.watercolorhouston.org) has so much to offer. You can view our full calendar of events, get information on special programs, renew your membership and enroll in classes. Our digital age makes all this easy access.

If you have not set up your log-in, see the instructions at the end of this arti-

(continued on page 6)

## News About the WAS-H Website (continued)

(continued from page 6)

cle. It is important to note, that you can't use two different email addresses in our system. You must log-in with the email address we have on file for you. And then if you would like to change it, you can edit your profile. If you need help with this, feel free to email me at kstopnicki@gmail.com.

There are many benefits to logging in. You can renew your membership, easily register for classes and access the online member directory.

Check out our online calendar with all events. If you look at the Calendar of Events page under About Us, you can click on specific events for more information. A neat trick is that when you do this, you will see the words “Add to My Calendar” on the upper right. Click on that to download a file that will add the event to your Google, Yahoo or other online calendar.

### Instructions to set up log-in:

1. At the very top of the web page www.watercolorhouston.org, find the Log-in button. It's above the logo on the right-hand side.
2. Click it and select, “Forgot Password” in the next screen. Since we did not set default passwords, you will need to do this to set a password.
3. Enter the email address you provided WAS-H. This will send an email with a link to that email address.
4. Go to your email account, find the email that was sent and click on the link to set a new password.
5. The link will take you to a page on our website to set a new password.
6. Enter your new password.
7. Now log in with your email address and new password.

## WAS-H Gallery Show Prospectus Explanation: “Not (be) Painted Under Supervision or In Class”

by Louise H. Bateman, Vice-President

As a former WAS-H Gallery Co-Director, many times I was presented with the challenge of interpreting the monthly prospectus guidelines as it pertained to a specific painting. Some of the time the answer was straightforward, objective and quantifiable, for example, does the dimensions of the frame meet the prospectus guidelines. Other times, the guideline may not be so clear-cut.

The WAS-H Prospectus governing intake of paintings for the WAS-H gallery shows states that an entry, “Not (be) painted under supervision or in class.” While this may seem straightforward, questions of clarifications have been raised. The following Q & A was reviewed and approved at the September 2016 Board Meeting and will hopefully provide some clarification.

1. What if a student completed a class assignment while in class OR completed a class assignment begun in class at home?

**Answer:** If a student is taking a class and begins a painting in class under the supervision of a teacher, that painting is only eligible to be entered into the WAS-H student show.

2. What if a student completes a homework assignment that was not begun in class?

**Answer:** If a student completes a class homework assignment entirely independently (not in a class or under the supervision of the teacher) that painting may be entered into the monthly WAS-H themed shows.

3. What if the artist is enrolled in an advanced critique group, where the coordinator does not give instruction or specific assignments, but the coordinator and the peer-artists provide feedback on the paintings that each artist submits for critique?

**Answer:** A critique group is not considered a class. Therefore, paintings discussed in a critique group would be eligible to be entered in an appropriately themed shows.

4. What if the artist is studying privately with a teacher and brings in an independently produced work (not assigned by the teacher) for critique?

**Answer:** Since the work was independently produced, it is eligible for all appropriately themed shows.

5. What if the artist solicits feedback on a painting from fellow artists (not teachers/supervisors and not in a class)?

**Answer:** Such a painting would be eligible to enter into any appropriately themed WAS-H gallery show, whether or not the artist makes changes to the painting based on peer feedback.

6. Is it permissible to submit a painting that was not done in a class, but uses a technique learned in a class, such as “wet on wet”, collage, salt, mono-printing, etc?

**Answer:** Any technique that was learned in class, and then used in subsequent paintings is acceptable to enter in any appropriately themed gallery show.

If you are considering entering a WAS-H Monthly show and have any questions regarding the Prospectus guidelines, please contact one of our Gallery Co-Director, Chris Bunker, ccbung@gmail.com, 713-501-8089 or Diana Burke, vdburke@gmail.com, 936-828-6453

## Brushes By the Beach®

### PLEIN AIR CONTEST ON GALVESTON ISLAND, TEXAS

Open to any artist using the Plein Air Technique  
Early Bird Entry Deadline: November 5, 2016  
Plein Air Contest Period: November 12 - 19, 2016

Cash prizes to first, second and third winners  
To enter, and for more information:

[gleegallery.net/Brushes-By-The-Beach-PleinAir](http://gleegallery.net/Brushes-By-The-Beach-PleinAir)  
or call  
**409 370-7350**





## Informative Notes about an Exceptional Artist

# Diggin' Degas

by Robin Avery

Edgar Degas was born in 1832 in Paris, France. He was born into a rich and cultivated upper middle-class family with acceptance into the Parisian social elite.



But oddly, his outlook on life was not slanted or prejudiced by his privileges. He came to accept the principles of Realism: truth to the visible world. "He could see the world with his own eyes, not the eyes of others." Like the artists of today, he painted the world he knew: portraits of well-to-do family and friends, scenes of their work and recreation. But his privileged status also gave him access to the lower-class life: to the back stages of ballet dancers, to the brothels, and to the vulgar cafe concerts. Degas was nonjudgmental in his subject matter and painted with a curious detachment.

"Detachment" is a good word to describe Degas. After his mother died when he was thirteen, he found relationships with others difficult. People described him as touchy and obstinate with a malicious wit. Degas could be fierce when crossed, but as a friend, he was loyal, tenacious and capable of disconcerting displays of affection. He was able to keep some lifelong friends such as Paul Gauguin and Mary Cassatt. He

8 October 2016

never married and has been accused of being a misogynist. He did, however, have a few women friends.

### Thoughts to ponder:

Few of his paintings contain both men and women together and they tend to be isolated from one another.

Except for paintings of parents and children, few of his figures touch or even look at one another in an intimate way. The expressive use of empty space between males and females was to



become a characteristic of his art.

It is noted that he did not, like Renoir, mold them into desirable shapes of erotic fantasy, but painted them as plain, active, and sometimes ugly women.

As his eyesight began to fail him, he worked more and more with charcoal, monotypes and pastels. He could feel such media with his hands. He relied on memory. He also began molding figures in wax. Renoir was quoted as saying, "Degas painted his best things when he could see no longer."

His last solo exhibition was of landscape monotypes in 1891. At that time,

he changed and broaden his style due to his worsening eyesight. In 1912 he was totally blind and ceased all his work. September 17, 1917, he died.

Museum of Fine Arts Houston will host the Exhibition Degas: A New Vision October 16-January 8.

Many of the quotes and facts were obtained from the book *Degas Life and Works* by Virginia Spate.

This article is to encourage to encourage you to read further about Degas and to share your knowledge in the upcoming *Washrags*.

## Recent Gallery Visitors



## Get Ready, Get Set, Enter

by Dawna Hasara, 2017 International Exhibition Director

The 2017 International Exhibition in March 2017 will be the 40th anniversary of this prestigious and important exhibition for our organization! Last year's exhibition was a special and beautiful show with a record number of entries and submissions by artists, 120 of whom were WAS-H members.

I would love to see even more of our over 600 WAS-H members be involved and support the exhibition with their entries, so I'm conducting two "How to Enter the IE" workshops this fall/winter: Monday, November 21, from 10:00 am to 2:00 pm or Saturday, December 10, from 10:00 am to 2:00 pm. The workshops will cover the following topics:

- A detailed review of the International Exhibition Prospectus to clarify eligibility, media, framing, and delivery requirements
- A step by step review of the call for entry process via CaFÉ™
- An overview of the entry and jurying schedule including a review of the juror's background and comments regarding artist entries
- Question-and-answer session

Let's have a great turnout this year of WAS-H member entries for our juror, Stephen Quiller, to choose from and to honor WAS-H's 40th anniversary! Sign up for one of the workshops by visiting the WAS-H website or by calling the gallery.

### 40th Annual International Exhibition Calendar

Tuesday, September 20, 2016  
Monday, November 21, 2016  
Saturday, December 10, 2016  
Friday, January 20, 2017, 11:59 pm MST  
Thursday, March 9, 2017

Sunday, March 12, 2017

Tuesday, March 14, 2017  
Thursday, April 6, 2017  
Friday, April 7, 2017

First day for entry submission using CaFÉ  
"How to Enter the IE" Workshop\* 10 am-2 pm  
"How to Enter the IE" Workshop\* 10 am-2 pm

Deadline for entry submission to CaFÉ  
Accepted entries must be received at the WAS-H gallery by 3 pm CST  
Stephen Quiller demo / Opening reception and awards ceremony  
Opening of Exhibition to the public  
Final day of Exhibition  
Exhibition is closed and paintings are prepared for return to artists; no artwork can be picked up or shipped prior to 10 am, Friday, April 7, 2017,

\*Register for one of the IE Workshops online or by calling the gallery.

The Prospectus and links to CaFÉ and CaFÉ tutorials are now available on the WAS-H website. Questions regarding the exhibition submission process can be sent to [intlwatercolorexhibit@gmail.com](mailto:intlwatercolorexhibit@gmail.com) or by calling the gallery and leaving a message for Dawna Hasara (2017 International Exhibition Director).

## Recent Gallery Visitors



9 October 2016



# September Monthly Gallery Show

by Diana Burke and Chris Bunger, Gallery Co-Directors



1st Place: Karen Lindeman, *No Turning Back*



2nd Place: Jackie Liddell, *Art Alley*



3rd Place: Brenda Emery, *California Coast*

10 October 2016

The theme of the September 2016 WAS-H monthly gallery show was “Cityscapes, Landscapes, Seascapes.” Blue skies, oceans, seabirds, boats, downtown buildings, trees, street scenes and more filled the 72 paintings entered for this month’s show. From traditional to abstract to photorealistic the submissions made the gallery walls bright and welcoming.

Les McDonald, Jr., was the juror for this show. Watercolor is his media of choice and his passion. Les admits that, as a watercolor artist, his paintings express his obsession with painting nature. Although he paints a variety of subjects he primarily concentrates on wildlife, birds, landscapes, seascapes and sporting art. A great admirer of birds he paints many species, mainly from the Texas Gulf Coast. His artwork captures their color, actions and moods but also

their subtle mannerisms. Les is a frequent instructor with WAS-H.

During his judging Les made many of the same comments about those paintings he chose for awards: GOOD DESIGN! GOOD DESIGN! GOOD DESIGN! Clean and fresh colors with no mud. Good texture. He particularly enjoyed the “swash” of movement in the first place painting of *No Turning Back* by Karen Lindeman. Thank you, Les, for being this month’s juror.

**Honoable Mentions were given to:**

- Francisco Carrion - *Pasadena Freeway* - Houston
- M. T. Crump - *Sailing Off Santorini*
- Ruby Allen - *A Better View*
- Becky Brocato - *Into the Storm, Venice*
- Robin Avery - *Nature’s Quilt*
- Mary Glover Rustay - *Beach Party for Four Chairs*
- Richard Linden - *Country Road*

Congratulations to the winners and a great big “Thank you” to all those artists who entered their paintings. You have truly made the WAS-H Gallery look beautiful.

This show could not have happened without the volunteers who helped at Take-In and then stayed to hang paintings. We applaud your commitment for making this such a successful show at the WAS-H Gallery.

# November Prospectus Theme: General/No Theme

Take-In: Saturday, November 5, 10 am - 12 pm  
(Paintings can be brought in before Saturday.)

Reception: Sunday, November 13, 4 pm - 6 pm  
Pick up paintings: Friday, December 2, 10 am - 3 pm

Questions: Chris Bunger, ccbung@gmail.com, 713-501-8089 or Diana Burke, vdburke@gmail.com, 936-828-6453

**Juror: Mary Wilbanks**

Mary Wilbanks is a painter, teacher and juror. She is a Signature Member of the National Watercolor Society, the Watercolor Honor Society U.S.A, as well as a longtime Signature Elite Member of WAS-H. Although she is an abstract acrylic painter now, Mary began her career as a portrait painter. Among the well known people who have commissioned her art are a famous golf pro and a former Miss Texas.

**Eligibility and Requirements:**

- Artist must be a current WAS-H member.
- Up to 3 entries per artist.
- Fee of \$10 per entry.
- Artwork Regulations:
  - Only original artwork accepted. May not be a likeness of another’s work, (i.e., painting, drawing, photograph-digital image or print).
  - Completed in the last 24 months.
  - Not painted under supervision or in a class.
  - At least 80% watermedia.
  - Surfaces: paper, Claybord, or Yupo only.
  - Has not won a WAS-H award or been in International or Annual Member’s Exhibits.
- Framing Regulations:
  - Artwork must be framed (only exception is Clayboard wooden cradle panels).
  - Frames must be plain, simple grooves only.
  - White or off-white mats and liners.
  - Frame width must not exceed 2”.
  - Must be strung with wire for hanging.
  - Plexiglas, if glass is needed.
  - Paintings not to exceed 48” in height or width, frame included.

**Awards**

- Cash Awards for 1st - \$100 / 2nd - \$75 / 3rd - \$50.
- Honorable Mentions awarded a ribbon – no cash.
- Only one award per artist.
- Winners are notified by phone.

**Sales**

- WAS-H accepts a 20% donation for sale of artwork.
- Artwork must remain in gallery for duration of the show.
- Price does not include sales tax, which will be added at time of sale.
- A 5% fee is taken out of credit card sales.
- All sales include frames.

**Liability**

WAS-H will not be liable for damage before, during, or after the exhibit. Artwork must: adhere to these guidelines, be appropriate for a family venue, and be acceptable to the juror.

**Abbreviations**

Medium: WC-Watercolor, A-Acrylic, G-Gouache  
Surface: P-Paper, YP-Yupo, CB-Claybord

Registration Form (NOTE: Each painting MUST be titled).

Name_____	
Email _____	
Tel. (H)_____ (C)_____	
Title #1 _____	
Price _____ Medium _____ Surface_____	
Title #2 _____	
Price _____ Medium _____ Surface_____	
Title #3 _____	
Price _____ Medium _____ Surface_____	
<i>I grant WAS-H permission to reproduce the artwork for publicity, documentary, or educational purposes. I accept the terms of the prospectus and confirm that the artwork meets the stated regulations.</i>	
Signature _____	Date _____

Attach this label or a facsimile to the back of each painting.

Name _____
Tel. _____ Price_____
Title _____
Framed Size____x____ Medium_____ Surface_____

Name _____
Tel. _____ Price_____
Title _____
Framed Size____x____ Medium_____ Surface_____

Name _____
Tel. _____ Price_____
Title _____
Framed Size____x____ Medium_____ Surface_____

11 October 2016



*A monthly publication of the*

**Watercolor Art Society - Houston**

1601 W. Alabama at Mandell, Houston, TX 77006

713•942•9966 • [www.watercolorhouston.org](http://www.watercolorhouston.org)

NON PROFIT  
ORGANIZATION  
U. S. POSTAGE  
**PAID**  
HOUSTON, TEXAS  
PERMIT NO. 2169

## Quality Giclee Printing & Custom Framing



**Canon iPF6400 Giclee 24" Printer**

- ☺ Top quality Arches Paper
- ☺ Color Corrections with CS5 Photoshop
- ☺ No Minimum Order

## Full Service Frame Shop

- ☺ Top quality Custom Frames and Mats
- ☺ 20% WAS-H Member Discount
- ☺ No Minimum Order

**By Appointment Only - Call**

**Les McDonald, Jr.**

2623 Stoney Brook Drive • Houston, TX 77063

(713) 977-4729

**We Offer a 20% DISCOUNT  
To All WAS-H Members!**

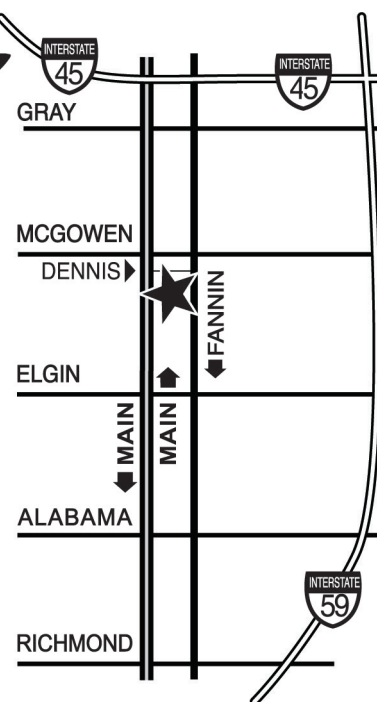


**SUPPLY  
ON MAIN**

**2711 Main St.  
Houston, TX  
77002**

If you need  
more directions  
Please call

**ART SUPPLY  
(713) 652-5028**



**email vikki: [artsupply@swbell.net](mailto:artsupply@swbell.net)**