



March 2016

Washrag
N E W S L E T T E R
Watercolor Art Society - Houston

The Outreach Programs at WAS-H

by Pam Knox *Outreach Director*

Since its inception, WAS-H has been involved in outreach programs designed to interact with the community at large. We strive to be and have been, a positive and beneficial force in Houston. One of the ways to further the interest in watercolor is to involve the community in all things watercolor. Here are just some of the outreach programs having a very positive impact in our neighborhood.

Texas Children's Hospital

For over seventeen (yes, that's 17!) years, WAS-H has been actively involved in the Arts in Medicine program at the Texas Children's Cancer and Hematology Center. The AIM program strives to pro-

vide enjoyable, educational, and meaningful artistic opportunities to patients, siblings, and parents. The program includes activities designed to provide opportunities for self-expression, empowerment, and development of coping skills. Each Tuesday, volunteers from WAS-H go to the clinical care center of the Texas Children's Hospital where there is a small area set up for us to paint with children waiting for their treatments. We allow the children, as well as their siblings, friends, and sometimes even parents, to paint anything they want and as much as they want.

Since this is an opportunity for the children to express themselves in their paintings, no instruction or teaching is involved. We have had, from time to time, volunteers who sketch or paint portraits of the children. While there are other organizations that support the AIM program, none have been involved as long or as consistently as WAS-H.

Carol Herron, the Arts in Medicine

Program Coordinator, and our contact there, says, "Through the dedicated work of the WAS-H volunteers, the patients and their siblings are able to have fun and create within an environment that provides a much-needed distraction

from the stress and difficulties of medical treatment." The children truly enjoy their time painting, and it is an enriching and rewarding experience for the volunteers. Valet parking at the center is free for WAS-H volunteers, and all supplies are there at the clinic, so there's nothing to bring but yourself.

High School for the Performing and Visual Arts

The High School for the Performing and Visual Arts (HSPVA) was the first public high school in the nation to correlate an academic program with concentrated training in the arts. Also, it was one of only three public schools in the nation to offer programs in both the visual and performing arts, and the first such institution in the Southwest. WAS-H became involved eight years ago by offering an annual scholarship to a graduating senior. This program has been so suc-

(continued on page 4)



March Events Calendar

Board Meeting – Feb. 29, 9:30 am
Accepted Entries for International Exhibition delivered by Mar. 3, 3 pm
Gallery closed – Mar. 4 & 5
Paint-Out – Mar. 5, 9:30 am - 3:30 pm
General Meeting & International Exhibition Reception/Awards – Mar. 6, 1:30 - 3:45 pm, Reception: 4 - 6 pm
Demo: Ann Abgott
International Exhibition – Mar. 8 – Mar. 31
Art Lovers Reception – Mar. 8, 5:30 - 7:30 pm
Paint-In – Mar. 12, 9:00 am - 3:30 pm
Erik Sprohge
Art Fair – Mar. 19, 11 am - 6 pm
Wed. Model Session– 12:30 - 3:30 pm, (except on March 9th)
Open Studio – Fridays, 10:30 am - 2:30 pm March 4, 18, and 25

WAS-H OFFICE

1601 West Alabama at Mandell
Open Tuesday–Saturday
10:00 am to 3:00 pm.
For information please contact:
Martin Butler, Administrative Assistant
713-942-9966
www.watercolorhouston.org
email: was-h@sbcglobal.net

WASHRAG INFORMATION

DEADLINE for copy, photographs and advertising for the *Washrag* is 4:00 pm, the 5th of each month except June and December. Material not received by the deadline will appear in the next month's *Washrag*. Please submit items via email or typed.

ADVERTISING RATES

Effective September 2001

Full page (7.5" by 10") \$75

Half page (7.5" by 4.7") \$50

Quarter page (3.7" by 4.7") \$25

One column (30 words) \$15

Area Teachers Listing \$25 (per year)

Payments for *Washrag* ads must be received no later than the 10th. Please mail check to WAS-H.

Column ads should be typed. All other ads must be print-ready. Photos must be 300 dpi. Submit material to:

WAS-H 713-942-9966

1601 West Alabama, Houston, TX 77006,
or via email to Rosalie Ramsden, ramsdende-sign@earthlink.net. Please put WAS-H in subject line of your email.

Wednesday Model Session

The Wednesday Model Session group will continue to meet every Wednesday, 12:30-3:30 (unless there is a workshop scheduled) at WAS-H.

Please email me crensink.art@att.net, and I will let you know the model each week before the session.

So y'all come with your drawing and painting gear and do your own thing for three quiet hours of model time. It is a wonderful opportunity. Carol Rensink, 713-299-4136



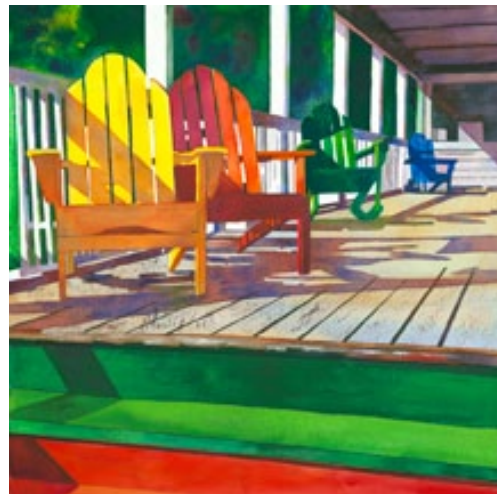
Recent model for Wednesday model lab group



General Meeting/ Opening IE Reception/Awards - March 6

Social 1:30, Meeting 2:00, Rec./Awards, 4:00

Meet Anne Abgott, Juror 39th International Exhibit & Demo



Pawlys Island by Anne Abgott

Originally from Canada, now residing in the United States, Anne maintains studios in Cortez, Florida, and Linville, North Carolina. She is the author of the #1 best selling book, *Daring Color*, published by North Light Books, and past President of the Florida Watercolor Society and the Florida Suncoast Watercolor Society.

Come meet Anne at her Demo and Members Reception on Sunday, March 6, or at the Art Lovers' Reception on Tuesday, March 8, from 5:30 to 7:30 pm at WAS-H.

February Demo Hilary Page

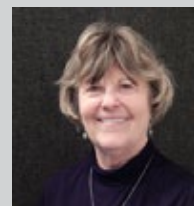
Long-time WAS-H member Hilary Page provided the demonstration at the February meeting. Born in England, she has painted in watercolor for 40 years and has published books and DVDs on colors, paints, painting, shadows, and figures. Her presentation focused on using visual complements, and how they differ from mixing complements.

Mixing complements are the colors opposite each other on the color wheel, and mixing these pairs produces a neutral gray.

When they are applied next to each other on your paper, however, they always darken or mute each other. If you have painted red flowers with green foliage and have been disappointed, this may be why. But red flowers in a turquoise vase just pop! Why? Because red and turquoise are visual complements.

Visual complements (Hilary's term, now widely used) used next to each other increase the vibrancy of each color. Sometimes these color pairs are referred to as

(continued on page 7)



From the President

by Beverly Aderholt, President

Dear WAS-H Members,

We have our annual election of officers at the General Meeting on April 10. Your attendance at the meeting and demo by well-known Texas painter of expressive horse paintings, Leslie Humphrey, is extremely important. We need a quorum of 35 to conduct this important WAS-H business, so I hope to see you there. The Board is nominating the following for your approval:



Lynne Woods
President



Louise Bateman
Vice President



Betty Westbrook
Treasurer



Alice Rogers
Secretary

Lynne Woods, our President Elect, has served on the Board of Directors for 2½ years. As Outreach Director she expanded our outreach at the Houston High School for the Performing and Visual Arts by inviting two students to each of our Paint-Ins and by increasing the \$1000 scholarship we offer with two \$500 scholarships to junior students for summer programs, which increases their chances for admission to colleges. She has served as Vice-President during 2015-16 in charge of all major workshops and demos. She also attended a workshop for Strategic Planning for nonprofits, and then headed a WAS-H committee to put what she learned into practice. The work of this committee has increased our volunteerism, made our building safer, and gotten our important records online. Last year Lynne applied for and received a \$10,000 grant to support our most important show, the International Exhibition. We are so fortunate to have her leadership in this exciting time of change and opportunity in the arts.

Our new Vice-President, Louise Bateman, joined the WAS-H Board a year ago as gallery co-director and has done a seamless job taking paintings in and hanging the shows. She has also worked very hard taking photos for the *Washrag*. She retired from a 29-year career as a Family Nurse Practitioner to pursue her love of fiber art and interest in watercolor. She started volunteering at WAS-H monthly take-ins, and when she discovered her passion for figure drawing, she started attending the weekly figure labs. Last fall she was on the Strategic Planning Committee in charge of security issues and the safety of our building.

Louise and her husband, Roy, live in the Spring Branch area, where they gutted and renovated a 1950s ranch home on two acres. Louise, plays the piano and loves to cook. She has done a lot of backpacking and spelunking in national parks in her younger days, and she still loves to canoe in local bayous. We will all profit from her energy and expertise.

Betty has served as Treasurer of WAS-H for the past three years. She managed a marketing consulting business for over 30 years, specializing in customer satisfaction, market research, and customer analytics. Her special talent is a thorough knowledge of financial management, identifying areas to best optimize expenditures that result in improving the services we provide to our members.

Alice has consistently helped out at WAS-H at receptions and Take-Ins for many years. She has served as Secretary of WAS-H for the past two years and provides the Board with meticulous minutes every month submitted perfectly and on time.

Lynne has filled most of the necessary Board positions for next year with very well qualified people who will be announced at the April meeting.

Warm regards to all,
Beverly

Member Teachers Listing

Sallie Anderson Studio

Galveston, 409-763-2265

Diana Brandt, Memorial, Houston
Beginners to Intermediate, 713-560-2324
watercolor70131@yahoo.com

Barbara Jeffery Clay, AWS

116 Huckleberry Dr.
Lake Jackson, TX 77566, 979-292-8058

Susan Giannantonio, Katy, TX, and
Mayville, NY, lucholiz@gmail.com,
www.susangiannantonio.com

Caroline Graham, WAS-H

Museum District
713-664-6589, cgrahamart@hotmail.com

Joanie Hughes

For Beginners (inside 610), 713-426-6767,
joan-hughes@comcast.net

Gay Paratore, BA, MEd, NWS, NSA, TWS, WAS-H, classes Tues. - Butler Longhorn Museum, Wed. - Santa Fe Studio, Aug. Acadia Workshop Center, 409-316-1005, www.nsartists.org

Carol Rensink, WAS-H

Figure Drawing & Anatomy
713-299-4136, crensink.art@att.net

Mary Rustay, Cell 713-703-1533 Watercolor for seniors at WAS-H, no charge.

A.J. Schexnayder, AWS, NWS, WAS-H
N.W. Houston, 281-444-7524
aj-schexnayder@att.net

Shirley Sterling, NWS, TWS, WFS, WAS-H
Clear Lake, 281-474-4214

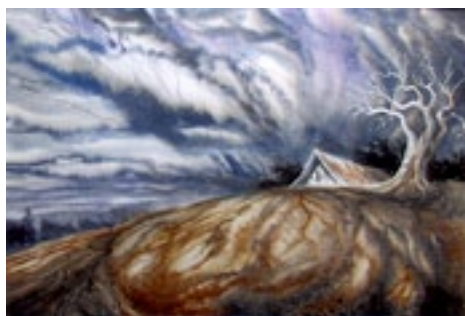
Mary Wilbanks, NWS, WHS, WAS-H,
Workshops and critiques. 281-370-7879,
marywilbanks@gmail.com

SpeedyPrinting
3433 West Alabama, Suite C, Houston, TX 77027
713.877.8466 Facsimile 713.877.8557
craig@speedypainting.net

Saturday Paint-In

Margaret Bock and David
Muegge, *Paint-In Co-Coordinators*

“Move It”
Erik Sprohge
Sat., March 12, 9:30 am - 3:30 pm
(setup at 9:00-9:30)



Sky and Earth Dance by Erik Sprohge

While to me, the mood of a painting is the most important aspect, there are infinite approaches in achieving this. One is movement: calm, wild, whatever, but leading the eye around and doing it in an interesting way. That's what we'll be exploring. Please bring a photo that YOU took or an idea sketch. Keep it simple. Or follow along what I'm doing.

Supply List

Paper: 1 sheet 300# Arches cold press, cut in half.

Board: 1 20" x 30" (or larger) gator board.

Paints: tube watercolors (include browns, blues, titanium opaque white.

Palette

Brushes: 1 large, 1 medium (like 30 black gold), 1 smaller, 1 tiny (2/0). Include old large and small cut off brushes and an old toothbrush.

Pencils: #2 or F and H mechanical

Also: sketch tracing paper, kneaded eraser, rag or paper towels and a water container.

Paint-Out Calendar

2016

March 5, - Galveston at Shery Feldman's beach house

April 16, Iola, Texas

Paint-In Calendar

2016

April 9, **Robin Avery**, Shapes

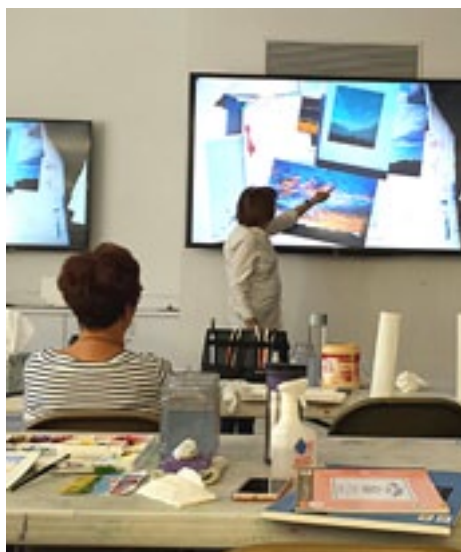
May 14, **Les McDonald**, Realism

June 11, **Gerry Finch**, Yupo

July 16*, **Kim Roots**, Collage

*Third week instead of second.

Thank you,
Caroline Graham



Caroline Graham gave an interesting and challenging Paint-In featuring how to paint clouds. She started by showing examples of all kinds of clouds and how her favorite artists painted them ... fluffy white, stormy, buttermilk, etc. and how they related to the subject matter.

One example Caroline taught was how to make fair-weather clouds by using damp Kleenex to roll out white clouds from blue painted background (blue cobalt to cerulean at horizon line) then using thirsty brush to soften edges of clouds.

It was a busy, challenging, interesting day. Caroline toured the room giving help to everyone.

The Outreach Programs at WAS-H (continued)

(continued from page 1)

cessful that, last year, we voted to give two senior scholarships to outstanding young artists. To further support and encourage these young artists, WAS-H also instituted a program last year to award two summer scholarships to HSPVA juniors.



In addition to the scholarships, WAS-H invites two students from HSPVA to attend our monthly Paint-Ins. As Eileen Montgomery, the chair of the Visual Arts Department, puts it: "How great for these kids to be able to learn from you all. I cannot thank you enough. It is a lesson in art and in life. Invaluable!"

Poe Elementary School

The goal of Edgar Allan Poe Elementary School ("Where Everyone's an Artist!") is "to develop creative thinkers and performers in the arts".

As part of our effort to help in that regard, last year WAS-H invited the school to participate in our first Intergenerational Art Exhibit (see the article in this newsletter for all the details about this new program). Not only was the program a hit with WAS-H members, but we also got an incredible response from Poe so we're doing it again this year. Also, we're seeking vol-

(continued on page 6)

WAS-H Future Major Workshop Artists & Dates

Anne Abgott

<http://www.anneabgott.com>

March 7-11, 2016

Mary Whyte

<http://www.marywhyte.com>

October 10-12, 2016

Stephen Quiller

March 13-17 2017

www.quillergallery.com

Michael Reardon

www.mreardon.com

October 9-13, 2017

Iain Stewart

<http://iainstew.fineartstudioonline.com>

March 5-9, 2018

Monthly Gallery Show Themes

2016

- March - International
- April - General/No Theme
- May - Intergenerational - Animals Real or Imaginary
- June - General/No Theme
- July - Student and Teacher Teacher Appreciation Show
- August - Experimental
- September - City, Landscapes, Seascapes
- October - Members
- November - General/No Theme
- December - Small Paintings

QUESTIONS:

- Louise H. Bateman, Gallery Co-Director
 - Louisehbateman54@gmail.com
 - 713-703-6889
- Or
- Terry Baird, Gallery Co-Director
 - 713-523-9008

2016 International Exhibition News

by Dawna Hasara, *International Exhibition Director*

The entries have been submitted, and 106 exceptional paintings have been chosen by our Juror, Ms. Anne Abgott! It's going to be a great display of colorful and skillfully crafted paintings from many different regions, representing many different artist styles and subjects. I'm excited to see the works in person and to be involved in sharing this beautiful exhibit with our members and Houston art lovers.

With that in mind, I have a couple of exciting changes to announce regarding the receptions and award ceremony for this year's show. To allow as many members to participate in the opening reception as possible, and to take advantage of the interest many of you will have in attending Ms. Abgott's Sunday demo, the formal Opening Reception and Awards Ceremony will be moved from Friday evening to Sunday, March 6, immediately following the afternoon demo.

A second "Art Lovers" reception has been added to allow a broader audience of Houston's art appreciation community, invited guests of our members, and those unable to attend on Sunday to enjoy a reception event. It will be held on Tuesday, March 8, from 5:30 to 7:30 pm in the WAS-H gallery.

Please go to the International Exhibition page on the WAS-H website for more details about the exhibition and reception events. We are offering valet parking on Sunday so be sure to plan to attend both the demo and reception!

Thursday, March 3, 2016

Friday/Saturday, March 4 & 5, 2016

Sunday, March 6, 2016

Tuesday, March 8, 2016

Thursday, March 31, 2016

Friday, April 1, 2016

Accepted entries must be received at the WAS-H gallery by 3 pm CST.

Gallery will be closed – uncrating/judging/hanging.

Juror Demo and Opening Reception/Awards.

Art Lovers' Reception.

Final day of Exhibition.

Exhibition is closed and paintings are prepared for return to artists; **no artwork can be picked up or shipped prior to 10 am, Friday, April 1, 2016.**

Splash

Gay Paratore, BA, M.Ed., NWS, NSA, TWS, WAS-H, was accepted to the Signature American Watermedia Exhibition. To enter an artist must be a signature Member of a National water-media society; Gay is a signature member of the National Watercolor Society. 289 paintings were submitted to the show and the juror, John Salminen, AWS-DF, NWS, selected 90 works. The show is at the Fallbrook Art Center in

California: February 6 to March 20. You may view the show on line at: Fallbrook Art Center, 7th annual Signature American Watermedia Exhibition. Gay Paratore will be teaching a weeklong workshop on reflections in metal, glass, and mirrors at the Acadia Workshop Center in August 2016. The workshop is on Mount Dessert Island in Acadia National Park, Maine. Gay is planning to spend 5 months in Maine this year. It is the first workshop center listed in Cheap Joe's workshop list. To see the web page go to Acadia Workshop Center.

Art on the Go

by shirl riccetti

COLORFUL ADVENTURE

Liz Hill, with Sylvia Cameron and Martha Carson, signed up for Darla Bostick's annual trip to Ghost Ranch, New Mexico. They traveled by van, with another van full of artists.

This is Liz's enthusiastic report: "As we all traveled by van, you actually had a chance to see the landscape, which was really fun.

"Ghost Ranch is where Georgia O'Keeffe painted for 20 years. Wherever you looked, the vista changed in front of you. And, everywhere, you saw O'Keeffe paintings. I always thought that she had abstracted everything she painted, but, in fact, I learned that the colors are actually as bright as she painted them.

"A highlight of the trip was a landscape tour. The stories of the ranch are



wonderful, right down to the hanging tree. We all took so many pictures that I have material for years of landscapes.

"We went for an Art Workshop, but spent most of the time just doing our own thing. We would hike and take pictures and then come back in the after-

6 March 2016

The Outreach Programs at WAS-H (continued)

(continued from page 4)



unteers to participate on March 11 at Poe for their All Art Day featuring the work of Matisse (there's also an article in this newsletter all about it). Mr. Fletcher Stafford, the visual arts teacher at Poe, has also asked whether any of our members might be interested in coming to Poe one day to teach one of his art classes. Much more information on this opportunity will be coming soon.

As you can see, there are great opportunities for you to be involved in one or more of our outreach programs. For more information, or to volunteer, please contact me at pamknox@sbc-global.net or 713-858-6624.

Seeds of Watercolor

A donation was made in honor of Margaret Scott Bock from Linda Tibolla.

WAS-H Art Fair March 19

by Theresa Wilson, Art Fair Chair

The WAS-H Art Fair returns on March 19! Our parking lot will be full of WAS-H members offering original paintings, prints, and cards for sale. Inside the gallery, several of our members will be doing painting demonstrations throughout the day. Combined with the beautiful International Exhibition currently on view, this is a wonderful opportunity to bring friends and family members out to see what WAS-H is all about. Come on out, grab a snack at our food truck, and enjoy this fun day of art and camaraderie at WAS-H. The Fair runs from 11 am 'til 6 pm.

February Demo Hilary Page (continued)

(continued from page 2)

"light complements" or "contrast colors," and you don't mix them to get vibrant colors, you place them next to each other on the paper. On a side note, Hilary warns everyone to stop using Aureolin yellow, as all brands turn brown with time.

Hilary then completed an entire painting with bright yellow lemons and blue vases (color complements), and flowers and pots in color-complement pairs. The end result was beautiful and vibrant. Hilary is a wonderful instructor and everyone learned so much as she explained her thinking as she painted.

Combining visual complements will still produce a neutral grey as do mixing

complements. Hilary underpainted the shading on the lemons with a grey from her blue and rose, toned down with yellow. When the paint was dry, she painted over with yellow and the lemons were gorgeous. We would all love to learn more from Ms. Page. You can order her books and DVD's online, and you can get the handout listing the visual complement pairs, titled *Visual & Mixing Complements: They Are Not the Same!* from her website, www.hilarypage.com.

— Beth Graham

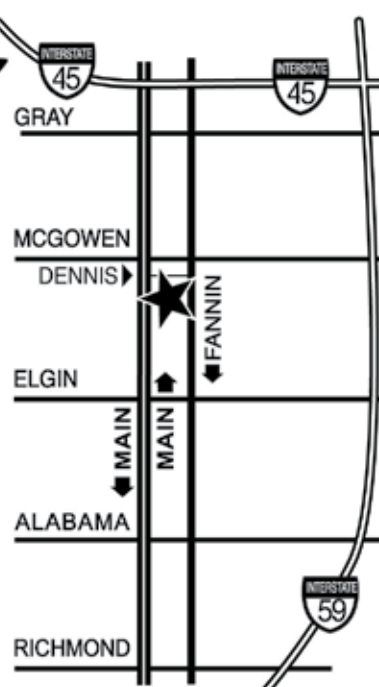
We Offer a 20% DISCOUNT To All WAS-H Members!

ART
SUPPLY
ON MAIN
2711 Main St.
Houston, TX
77002

If you need
more directions
Please call

ART SUPPLY
(713) 652-5028

email vikki: artsuply@swbell.net



Quality Giclee Printing & Custom Framing



Canon iPF6400 Giclee 24" Printer

- ☺ Top quality Arches Paper
- ☺ Color Corrections with CS5 Photoshop
- ☺ No Minimum Order

Full Service Frame Shop

- ☺ Top quality Custom Frames and Mats
- ☺ 20% WAS-H Member Discount
- ☺ No Minimum Order

By Appointment Only - Call

Les McDonald, Jr.

2623 Stoney Brook Drive • Houston, TX 77063

(713) 977-4729

7 March 2016

February Gallery Show “TEXAS”-

by Louise H. Bateman and Terry Baird, Gallery Co-Directors

The February 2016 “TEXAS”-themed WAS-H Gallery Show attracted 35 artists who submitted 54 paintings. This was a 21% increase in entries over January 2015! The paintings beautifully expressed different aspects of Texas and captured the spirit of the Lone Star State. Our juror was Mary Glover Rustay, a native and lifelong Texan. Mary holds a BS degree in Fine Arts from Austin College and is a charter member of WAS-H. She has served on the WAS-H Board of dDirectors in many capacities, including President 1979-1980. Since 1986 she has taught the Senior Class, which is so popular it has a waiting list. Many of her paintings are in private collections across the United States and abroad, as well as being accepted into the WAS-H International and Membership shows. She is also a full-time realtor, and loves to spend time with her family, especially her four grandchildren.

After much contemplation and consideration, she finally narrowed her selection down to the following paintings.



3rd Place: **Debbie Hagemeyer** – *Catching Up*



1st Place: **Erik T. Sprohge** – *Flat Country*

2nd Place:

Anne Treadwell

– *Texas My Texas*



Honorable Mentions

Ruby E. Allen: *Rodeo Rally*
Brenda Emery: *Big Bend Country*
Dawna Hasara: *Waco*
Robert Ruhmann: *Texas Deer*
Fred A. Kingwill: *Texas Teal*
Daniela Werneck: *Lolly Puppy*

Congratulations to all the artists who entered the show. And as always, a big THANK YOU to all the volunteers who assisted hanging the show and assisted with the gallery reception.

WAS-H April 2016 Gallery Exhibit Theme - General

Take-In: Saturday, April 2, 10:00 am – 12:00 pm
(Paintings can be brought in before Saturday
Questions: Louise Bateman, louisehbateman54@gmail.com or 713 703 6889; or Terry Baird at 713-289-9662.

Gallery Reception: Friday, April 8, 2016, 6 - 8 pm
Painting Pick up: Friday, May 6 , 2016, 10 am to 3 pm

Juror: Trudy Askew received a BFA degree from the University of Texas in Austin, and a MFA degree in drawing and painting from the University of Illinois in Champaign-Urbana. She also studied in the Skowhegan School of Painting and Sculpture in Maine; University of California, Santa Barbara; Universidad de Valencia, Spain; and Universidad de Artes Plasticas in Guadalajara, Mexico. She has taught art for 25 years in a variety of locations: University of Houston, Houston Baptist University, University of Illinois, Alief Independent School District, Art League of Houston, Grace School, and the Jewish Community Center. She is a figurative painter and is represented by Archway Gallery.

Eligibility and Requirements:

- Artist must be a current WAS-H member.
- Up to 3 entries per artist.
- Fee of \$10 per entry.
- Artwork Regulations:
 - Only original artwork accepted. May not be a likeness of another's work, (i.e. painting, drawing, photograph-digital image or print).
 - Completed in the last 24 months.
 - Not painted under supervision or in a class.
 - At least 80% watermedia.
 - Surfaces: paper,Clayboard, or Yupo only.
 - Has not won a WAS-H award or been in International or Annual Member's Exhibits.
- Framing Regulations:
 - Artwork must be framed (only exception is Clayboard wooden cradle panels).
 - Frames must be plain, simple grooves only.
 - White or off-white mats and liners.
 - Frame width must not exceed 2".
 - Must be strung with wire for hanging.
 - Plexiglas, if glass is needed.
 - Paintings not to exceed 48" in height or width, frame included.

Awards

- Cash Awards for 1st - \$100 / 2nd - \$75 / 3rd - \$50.
- Honorable Mentions awarded a ribbon – no cash.
- Only one award per artist.
- Winners are notified by phone.

Sales

- WAS-H accepts a 20% donation for sale of artwork.
- Artwork must remain in gallery for duration of the show.
- Price does not include sales tax, which will be added at time of sale.
- A 5% fee is taken out of credit card sales.
- All sales include frames.

Liability

WAS-H will not be liable for damage before, during, or after the exhibit. Artwork must: adhere to these guidelines, be appropriate for a family venue, and be acceptable to the juror.

Abbreviations

Medium: WC-Watercolor, A-Acrylic, G-Gouache
Surface: P-Paper, YP-Yupo, CB-Clayboard

Registration Form (NOTE: Each painting MUST be titled).

Name_____	
Email _____	
Tel. (H)_____(C)_____	
Title #1 _____	
Price _____ Medium _____ Surface_____	
Title #2 _____	
Price _____ Medium _____ Surface_____	
Title #3 _____	
Price _____ Medium _____ Surface_____	
<i>I grant WAS-H permission to reproduce the artwork for publicity, documentary, or educational purposes. I accept the terms of the prospectus and confirm that the artwork meets the stated regulations.</i>	
Signature _____	Date _____

Attach this label or a facsimile to the back of each painting..

Name _____
Tel. _____ Price_____
Title _____
Framed Size____x____ Medium_____ Surface_____

Name _____
Tel. _____ Price_____
Title _____
Framed Size____x____ Medium_____ Surface_____

Name _____
Tel. _____ Price_____
Title _____
Framed Size____x____ Medium_____ Surface_____



A monthly publication of the

Watercolor Art Society - Houston

1601 W. Alabama at Mandell, Houston, TX 77006

713•942•9966 • www.watercolorhouston.org

NON PROFIT
ORGANIZATION
U. S. POSTAGE
PAID
HOUSTON, TEXAS
PERMIT NO. 2169

Our March 5th Paint-Out location will be at Pirate's Beach West at the second home of Sherry and Bernie Feldman.

Their address is 14410 Spy Glass Circle, Galveston, Texas 77554. Take I-45 to Galveston. Cross bridge to the island. Turn right on 61st. Turn Right on the Sea Wall. Continue to follow FM 3005 to Pirates Beach West. Look left. There is a fountain and sign to the community, Pirates Beach West. Turn left onto Swash buckle. The very first street to the right is Spy Glass Circle. They are the second house on the right. Pirates Beach West is just before the state park. Sherry's cell is 832-863-7319.

Bernie's cell is 832-863-7314. They are looking forward to hosting this fun day.

Mary Rustay, our Paint-Out Chairman, asks that you let her know if you plan to come! **(713-703-1533)**. Please bring your own food and drinks and chair, easel, art supplies, camera, sun screen, umbrella for shade, etc. See you on Saturday, March 5th!

Mary Rustay

