



# Washrag

N E W S L E T T E R

Watercolor Art Society - Houston

June/July 2016

## Voices of New Board Members

by Lynne Woods, *President*



**Kathy Bell,**  
**Membership**  
**Co-Director:**

I'm a retired art teacher who loves kids and just

can't get enough of art. I'm always up at WAS-H participating in Senior Class and Friday Open Studio or volunteering at the Gallery Take-In each month and attending the Demos. I also substitute for Martin when he takes a vacation, and welcome members to the General Meeting. I think art should be fun and reveal the kid in us. I hope you can see that in my paintings.

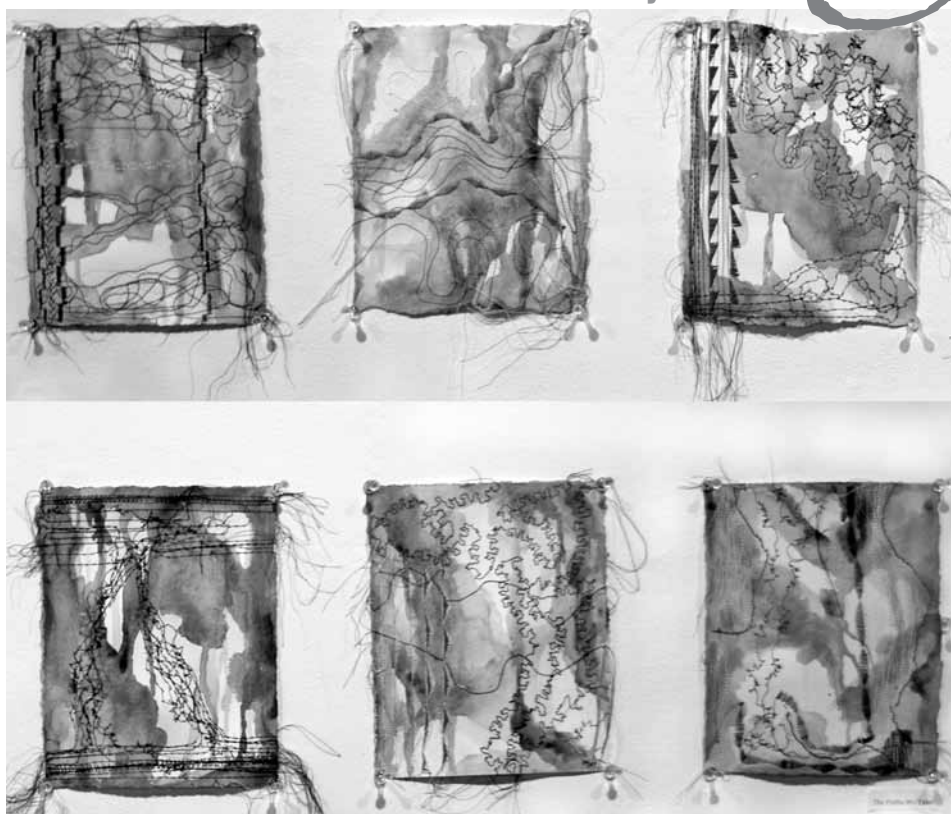


**Chris Bunger,**  
**Gallery**  
**Co-Director:**

I heard about WAS-H from a neighbor and have been there

about every week since I joined in 2014. I love the Thursday class, Wednesday figure drawing, and the new Friday Video Open Studio. I also take as many of the monthly classes offered from various artists as I can fit in my schedule. I have learned so much, and the people are fun and creative and generous in sharing their talents. I wanted to help with the gallery as part of that learning experience and to be of service to this great organization.

(continued on page 5)



The Paths We Take by Eleanor Annie Morris-Swank

## Ninth Annual WAS-H Scholarship Awarded to HSPVA Senior

by Pam Knox *Outreach Director*

WAS-H has awarded its annual scholarship to Eleanor Annie Morris-Swank, a senior at the High School for the Performing and Visual Arts (HSPVA). Eleanor plans to attend Platt Institute, where she will study fashion design. About her work, Eleanor says, "Since I

(continued on page 8)

### June/July Events Calendar

#### June

**Take-In** – June 4, 10 am - 12

**Board Meeting** – June 6, 9:30 am

**Paint-In** – June 11, 9:00 am - 3:30 pm

Gerry Finch

**June Gallery Reception** - June 12, 4-6 pm

**No General Meeting, Paint-Out, Open Studio**

**Wed. Model Lab** – 12:30 - 3:30 pm

#### July

**Take-In** – July 9, 10 am - 12

**Paint-In** – June 16, 9:00 am - 3:30 pm

Kim Rootes

**July Gallery Reception** - July 17, 4-6 pm

**No Board Meeting, General Meeting, Paint-Out**

**Wed. Model Lab** – 12:30 - 3:30 pm

**Open Studio – Fridays**, 10:00 am - 2:00 pm, May 13, 20, 2

## WAS-H OFFICE

1601 West Alabama at Mandell  
Open Tuesday–Saturday  
10:00 am to 3:00 pm.  
For information please contact:  
Martin Butler, Administrative Assistant  
713-942-9966  
[www.watercolorhouston.org](http://www.watercolorhouston.org)  
email: [was-h@sbcglobal.net](mailto:was-h@sbcglobal.net)

## WASHRAG INFORMATION

DEADLINE for copy, photographs and advertising for the *Washrag* is 4:00 pm, the 5th of each month except June and December. Material not received by the deadline will appear in the next month's *Washrag*. Please submit items via email or typed.

## ADVERTISING RATES

Effective September 2001

Full page (7.5" by 10") \$75

Half page (7.5" by 4.7") \$50

Quarter page (3.7" by 4.7") \$25

One column (30 words) \$15

Area Teachers Listing \$25 (per year)

Payments for *Washrag* ads must be received no later than the 10th. Please mail check to WAS-H.

Column ads should be typed. All other ads must be print-ready. Photos must be 300 dpi. Submit material to:

WAS-H 713-942-9966

1601 West Alabama, Houston, TX 77006,  
or via email to Rosalie Ramsden, [ramsdendesign@earthlink.net](mailto:ramsdendesign@earthlink.net). Please put WAS-H in subject line of your email.

## Wednesday Model Session

The Wednesday Model Session group will continue to meet every Wednesday, 12:30-3:30 (unless there is a workshop scheduled) at WAS-H.

Please email me [crensink.art@att.net](mailto:crensink.art@att.net), and I will let you know the model each week before the session.

So y'all come with your drawing and painting gear and do your own thing for three quiet hours of model time. It is a wonderful opportunity. Carol Rensink, 713-299-4136



Recent model for Wednesday model lab group



2 June/July 2016

## Next General Meeting September Social 1:30, Meeting 2:00 Demo: Carol Rensink

## May Demo Carol Slobin

by Beth Graham, *Education Director*



Carol Slobin, Elite Signature WAS-H member, is a native Houstonian who received her BFA from the University of Texas, and who currently lives and teaches in Sugar Land. Carol provided a demonstration on painting a figure. She showed how she moves from a pencil drawing from a model to creating figures with clean colors, luminous washes, and controlled edges. Her palette consists of non-staining pigments, and she stressed the importance of a clean palette mixing area and clear water to achieve the glowing washes. Working primarily with flat brushes, Carol demonstrated the first washes of warm colors applied to predominantly dry paper. She pulled edges from the figure into the background and from background into the figure to unify the picture. Her paintings of figures are often in a vignette style, with simple backgrounds just hinting at what lies nearby. As she developed the shadows on the figure and the clothing she applied "just a few strategic lost and found edges." As Carol worked the room was silent, with participants entranced by the transformation of a blank piece of paper to a life-like but painterly person. Her brushstrokes were beautiful and it was clear that Carol allows the paint to continue to work after application. Members of the figure drawing class were excited to see how to bring color to their drawings of models while still letting the drawing be a main focus. The finished work was beautiful and we all hope to learn more from Carol in future workshops at WAS-H.



## From the President

by Lynne Woods, *President*

Dear WAS-H members,

First of all, thank you to all of you who have put your trust in me as your new President. I am honored and will do everything in my power to carry our society forward.

Next, I wish to express my deep appreciation and admiration to my friend, Beverly Aderholt, our Past President. Over the last two years, her gracious leadership has inspired and sustained us as we worked together to improve our building, our classes, our exhibits, and our technology. Thank you, Beverly.

Thanks also to our departing Board members, each of whom has contributed greatly to our ongoing vitality:

Terry Baird, Gallery Co-Director

Irene Crutchley, Activities Director

Mojan Filsoofi, Annual Members Exhibit Director

Pam Knox, Outreach Director

Karen Lindeman, Membership Co-Director

Jan McNeill, Education Director

David Muegge, Building Director

Ann Sanders, Membership Director

Mary Treanor, Administration Director

Please join me in extending our thanks to these dedicated WAS-H volunteers for their service.

Finally, I would like to introduce and welcome our new-to-the-Board members. You can learn a bit about them in the article, "Voices of New Board Members."

Kathy Bell, Membership Co-Director

Chris Bunger, Gallery Co-Director

Diana Burke, Gallery Co-Director

Denise Gowan, Annual Members Exhibit Director

Beth Graham, Education Director

Anne Gregory, International Exhibition Co-Director

Frank Griffin, Building Director

Diane Petersen, Membership Co-Director

Alex Tyson, Outreach Director

A complete list of the 2016/2017 WAS-H Board Members, Chairs, and Staff can be found on our website at [watercolorhouston.org/About Us/Board of Directors](http://watercolorhouston.org/About%20Us/Board%20of%20Directors).

In other news, we have decided to move our monthly Gallery Opening Reception from Friday nights to Sunday afternoons from 4 to 6 pm. The upcoming reception will be held on Sunday, June 12, 4 to 6 pm. We hope this change will save our members an extra trip downtown during months with a General Meeting Demo, and make parking easier during Sunday daylight hours.

Remember that July is our fun student show with the back wall reserved for our wonderful teachers' art. Hope to see you at the Opening Reception on Sunday, July 17, from 4 to 6 pm.

Warm regards to all,

Lynne

## Member Teachers Listing

### Sallie Anderson Studio

Galveston, 409-763-2265

### Diana Brandt, Memorial, Houston

Beginners to Intermediate, 713-560-2324  
[watercolor70131@yahoo.com](mailto:watercolor70131@yahoo.com)

### Barbara Jeffery Clay, AWS

116 Huckleberry Dr.  
Lake Jackson, TX 77566, 979-292-8058

### Susan Giannantonio, Katy, TX, and

Mayville, NY, [lucholiz@gmail.com](mailto:lucholiz@gmail.com),  
[www.susangiannantonio.com](http://www.susangiannantonio.com)

### Caroline Graham, WAS-H

Museum District  
713-664-6589, [cgrahamart@hotmail.com](mailto:cgrahamart@hotmail.com)

### Joanie Hughes

For Beginners (inside 610), 713-426-6767,  
[joan-hughes@comcast.net](mailto:joan-hughes@comcast.net)

### Gay Paratore, BA, MEd, NWS, NSA,

**TWS, WAS-H**, classes Tues. - Butler  
Longhorn Museum, Wed. - Santa Fe Studio,  
Aug. Acadia Workshop Center, 409-316-  
1005, [www.nsartists.org](http://www.nsartists.org)

### Carol Rensink, WAS-H

Figure Drawing & Anatomy  
713-299-4136, [crensink.art@att.net](mailto:crensink.art@att.net)

### Mary Rustay, Cell 713-703-1533 Water-

color for seniors at WAS-H, no charge.

### A.J. Schexnayder, AWS, NWS, WAS-H

N.W. Houston, 281-444-7524  
[aj-schexnayder@att.net](mailto:aj-schexnayder@att.net)

### Shirley Sterling, NWS, TWS, WFS, WAS-H

Clear Lake, 281-474-4214

### Mary Wilbanks, NWS, WHS, WAS-H,

Workshops and critiques. 281-370-7879,  
[marywilbanks@gmail.com](mailto:marywilbanks@gmail.com)

 **SpeedyPrinting**  
3433 West Alabama, Suite C, Houston, TX 77027  
713.877.8466 Facsimile 713.877.8557  
[craig@speedyprinting.net](mailto:craig@speedyprinting.net)

3 June/July 2016



## Saturday Paint-In

Margaret Bock and David Muegge, *Paint-In Co-Coordinators*

### Yupo

**Gerry Finch, WAS-H, NWS**  
**Sat., June 11, 9:30 am - 3:30 pm**  
**(setup 9:00-9:30 am)**



Nothing helps to tap into your creativity and loosen up quite like Yupo! We will be painting birds nests in the morning and non- objective abstracts in the afternoon. You will not need any drawings on your paper.

### Supplies:

Bring four pieces of Yupo 10" by 13".(I will have some available if needed) Bring your usual watercolor supplies and gouache, if you have it. Be ready to have fun!

## HSPVA Students at April Paint-In



Sophie Rodriguez, Adom Sterling and Alexis Rojas

4 June/July 2016

### Collage with Found Papers and Objects

**Kim Rootes**  
**Sat., July 16, 9:30 am - 3:30 pm**  
**(setup 9:00-9:30 am)**



In depth, this workshop will offer collaging on paper with techniques that offer different slants on collaging. These collages can be exhibiting at WASH as they will contain paint on paper. Students will prepare and paint papers ; work with gluing down papers and found objects; see how found objects can enhance a work either singly or grouped; discover tearing techniques along with other ways to use paper; explore the different kinds of paper to be used and how to use paint with them.

There will be individual instruction, demos and technique presentations, class discussion and history of collage. As well, there will be a few examples on display of completed collages. There will be opportunity to work on and finish several collages.

## Thank you, Les McDonald

Thank you Les MacDonald for a great paint-in. Students experimented with

## WAS-H Future Major Workshop Artists & Dates

### Mary Whyte

<http://www.marywhyte.com>

October 10-12, 2016

### Stephen Quiller

March 13-17 2017

[www.quillergallery.com](http://www.quillergallery.com)

### Michael Reardon

[www.mreardon.com](http://www.mreardon.com)

October 9-13, 2017

### Iain Stewart

<http://iainstew.fineartstudioonline.com>

March 5-9, 2018

## Monthly Gallery Show Themes

### 2016

- June - General/No Theme
- July - Student and Teacher Teacher Appreciation Show
- August - Experimental
- September - City, Landscapes, Seascapes
- October - Members
- November - General/No Theme
- December - Small Paintings

### QUESTIONS:

Chris Bunger, Gallery Co-Director

• [ccbung@gmail.com](mailto:ccbung@gmail.com)

• 713-501-8089

Or

• Diana Burke, Gallery Co-Director

• [vdburke@gmail.com](mailto:vdburke@gmail.com)

• 936-828-6453, 832-932-5603

technique of using masking for ocean waves and seagulls on a beach. Several students brought in paintings for critique and were encouraged by Les with helpful hints for improvement of their paintings.

— Ann Sanders

## New Board Members 2016-2017



From left to right: Chris Bunger, Anne Gregory, Diana Burke, Alex Tyson, Denise Gowan, Frank Griffin, Kathy Bell, and Beth Graham.

## Our Thanks to Departing Board Members



From left to right: Terry Baird, Ann Sanders, Jan McNeill, Pam Knox and David Muegge.

## Splash

**Toni M. Elkins** has won the Daniel Smith Award in The Missouri Watercolor National. She was also one of 400 artists selected out of 1200 entries for Artfields 2016: Lake City, SC.

**Les McDonald's** painting *Alaska Crab Traps* will be included in *Splash 17* coming out in June or July.

**Gay Paratore** has been accepted into three super shows: The Fallbrook Watercolor Signature Membership Show in CA; the Western Federation Show (entering through the San Diego Watercolor Society; and the Adirondack Exhibition of American Watercolors in Old Forge, NY.

She just learned that her watercolor from a previous Adirondack Show was purchased by a gentleman from Bilbao, Spain, and she now has one in China, too. Gay entered a book cover competition for a book about the stories of burn victims at the University of Texas Medical Branch in Galveston; she won the contest

with a watercolor monoprint called *The Spirit of Hope*. A giclee of the print will be on display at the adult burn unit at UTMB; it will also be used as a letterhead and on greeting cards.

May 7th, the National Society of Artists held their annual membership show at the San Luis Hotel in Galveston and Gay Paratore won Best of Show with her *Drain 'Em Off; Count 'Em Out* watercolor of three lobstermen at work. Gay will be spending the summer in Maine, where she will be teaching a workshop on reflections in metal, glass, and mirrors at the Acadia Workshop Center in August. (Please see their website for more information.) The workshop is in the town of Benard near "The Seawall" in Acadia National Park.

**Robbie Fitzpatrick's** watercolor painting *Foot of the Bed* has been selected for publication in North Light Books' *Splash 18- The Best of Watercolor: Value/Light + Dark*, edited by Rachel Rubin Wolf. Robbie has also been accepted into the *Women Artists of the West* and the *International Guild of Realism*.

(continued from page 1)



### Diana Burke, Gallery Co-Director:

I retired in 2009 after 20 years with American General Life Insurance

Company as a senior programmer/analyst. I had served as president and various other positions with the Conroe Art League before moving to League City in 2010. From 2012 to 2013 I served as president of the Lone Star Art Guild, which at that time was comprised of 18 art leagues and approximately 1500 members in a 200-mile radius of Houston. I am pleased to be a member of WAS-H and to join with other people who share my love of art. I am pleased to be nominated as a co-director of the WAS-H gallery because I believe it is important for all members to help maintain and grow an organization.

(continued on page 6)

5 June/July 2016



# Art on the Go

by shirl riccetti

“WE ARE WHAT WE REPEATEDLY DO.”

Aristotle

Accordingly, Linda Flowers is an artist at heart. These are her enthusiastic words:



“I began my artist journey when our family was transferred to Rio de Janeiro, Brazil. I met Claudio, a most patient and wonderful artist who agreed to give my private art classes.

I also joined a group of about 15 art enthusiasts, and although in the beginning the language barrier was a bit challenging, I soon picked up Portuguese, making communicating a lot easier.

We also took a trip to Buenos Aires, and found Argentina captivating. I usually take tons of photos, and one that comes to mind, is the famous 160-ft.-tall, Gomero tree, planted in 1781.

In 2012, we traveled to Singapore, and I was immediately taken by its botanical gardens and the Marina Bay Skypark. I have an array of photos from this magical city, begging to be painted.

The following year found us walking the boulevards of Madrid and Barcelona. The architecture gave way to many photos and outdoor sketches. It was always fun to sit at a cafe, enjoying a coffee or wine, and drawing quick sketches of people doing their thing.

We ventured to Montreal, Quebec, just as the leaves were turning color. What a feast for my eyes and camera. As usual, I pulled out my sketchpad and pencils.

Last year, we travelled to Lima, Peru, walking the city to take in all of its vibrant city life. My camera captured Spanish colonial balconies built in the 17th and 18th centuries, as well as people selling flowers and wares on the streets of Lima. I have photos of this fascinating place, waiting to be brushed onto a canvas.

In Mexico, we have also visited Guanajuato, a UNESCO World Heritage Site, and San Miguel De Allende, a well known artist colony. I have already painted two pieces from this trip, which highlight the beautiful people and colors of these cities.

As you can imagine, whenever I travel, the first thing I pack is a big purse so that I can carry my sketchbook, Faber-Castell artist brush pens, and watercolor pencils.

I am looking forward to our upcoming trip to Reykjavik, Iceland, and you can be sure that I will be taking photos and sketching.

Linda Flowers.

\*\*\*\*\*

Thank you, Linda. She truly lives Aristotle’s words. It’s apparent that Linda loves her trips, is organized and is open to capturing all of the vibes and colors of each place.

Do you have an art trip, an art workshop, or art travel tips that you would like to share? Please contact: [sriccetti@comcast.net](mailto:sriccetti@comcast.net).

carpe diem  
Shirl Riccetti

[sriccetti@comcast.net](mailto:sriccetti@comcast.net)

## Voices of New Board Members continued

(continued from page 5)



**Denise Gowan, Annual Members Exhibit Director:**

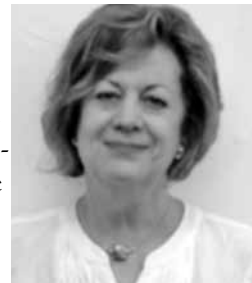
My professional experience has been with nonprofit organizations, so I’m looking forward to being on the Board and supporting WAS-H in its continued growth. In addition to watercolor, I like to garden with native plants in my butterfly garden, play the ukulele, and travel.

**Beth Graham, Education Director:**

What I love about WAS-H is the people I meet and the amazing workshop opportunities. I love the wide variety of offerings that accommodate our many styles of painting. I got into art when my grandmother painted with me using watercolor pencils when I was eight, and I started painting full time when I retired almost two years ago. In my free time, I paint, read, play cards, quilt, cook for my friends, and travel. I’d like to see WAS-H continue the excellent offerings our past Board has established. My background is as an elementary principal, teacher, and technology specialist.

**Anne Gregory, International Exhibit Co-Director:**

What I love about WAS-H is the professionalism of the instructors and



(continued on page 8)

## Limitless: A Closer Look at Artist Sara Jane Parsons

by Haley Bowen



Sara in front of her piece at the IE show

I spent the weekend of April 16th with Sara Jane Parsons, an Austin-based watercolor artist from Minnesota, at her home in Austin. Her home was open, colorful, warm, and charming. The old wooden floors glowed with a history of footsteps and stories, and the walls were covered with figure drawings, paintings she created, paintings from friends, and other eclectic ornamentation.

I met Sara at WAS-H’s recent 39th International Exhibition. Before I met her at the Take-In, her painting struck a chord with me. As a neo-expressionist figurative artist myself, I appreciate the broken-down form, an emphasis on mark making, and a bold composition. I watched as Sara’s portrait of a young child was unpacked and quietly hung on

the wall for the masses to view opening night.

At the opening night of the IE show, a woman came in in a wheelchair, surrounded by a varied crowd of young adults. She wheeled herself over to the foot of the portrait I had admired so much at the Take-In and hanging by moving a toggle by the bottom of her chin. When her group began to take pictures of her in front of her work, I grew curious whether or not she was the artist, as it didn’t seem that she could move any other part of her body than her head. Before she could leave I approached her. “Are you the artist of this piece?” Sara glowed. “Yes, that’s mine! It’s my niece.” The answer of how she painted it floated in between us, and as if she had anticipated what I was wondering, she said, “I painted her with my mouth.”

After meeting her and my weekend stay with her, I had to share her story. A “child of the ’70s,” Sara Jane Parsons has been making things her whole life. In her youth, she made crafts of her time:



Sara, her niece, her caretaker, and me on S. Congress Avenue in Austin.

Batik, tie-dye, and macramé. A car accident in her 20s broke her neck, smashed her spinal chord, and left her paralyzed from the collarbones down.

As Sara told me her story over a phone interview, I didn’t feel sadness

from her voice. I didn’t feel anger or disgust. I felt truth, openness knowing everything happens exactly as it should, and endurance.

She said she had a positive attitude after the accident and that she wanted to “get going in life,” regardless of her circumstance. After some occupational therapy and rehab, Sara figured out how to utilize her mouth in ways not imagined before. She started to write and paint little things such as cards, and found a peace knowing she could make things like when she was a child. Watercolor, fluid and lightweight, was a medium Sara could manipulate easily against acrylic or oil.

I asked Sara who helped her and where she was in her recovery period. After the accident, she moved back home to stay with her mother, a blessing of a caretaker. However, Sara’s powerful drive lulled her into an independent lifestyle, and at 26 years old, she moved to California to attend Berkeley Law School, independent from her family. She hired her own help, graduated from Berkeley, and grew into a successful law career for people in crisis, managing about 80 clients in her young adult years.

Amidst her corporate career, Sara continued painting and stemmed into figure drawing. “Figure drawing opened up a whole new world for me,” Sara stated in our interview. “I took two to three classes a week and saw progress, was challenged, and felt adrenaline like I did when I was involved in sports in my youth. It was my new sport.”

A caretaker of Sara’s grew very fond of her figure drawings and paintings, and Sara remembered this caretaker telling Sara to pay attention to her art. After many hours working with her clients and all the while creating more works of art,



## Limitless: A Closer Look at Artist Sara Jane Parsons continued

Sara needed to find balance. She decided to quit her job; move to Austin, Texas, and get serious about her painting.

At dinner one night in Austin, a waiter approached Sara and asked if she knew Jared Duncan of the International Mouth and Foot Painter's Society. "It was a Godsend. I wanted to join something, get somewhere, and do something with my blessing. This saved me," Sara said about this encounter.

She applied to and was accepted into the International Mouth and Foot Painter's Association (IMFPA), where she is still sponsored to create works of art. Through this society, Sara has been awarded schol-



Sara, her husband Jimmy, and me at the IE show.

arships, attended workshops, and been involved in many exhibitions with other artists who have disabilities.

Sara's painting technique has become stronger over the years. At 52 years old, she has been creating art as a way to come to terms with the accident. "It's interesting how society treats you before and after an accident [like mine]. I've realized that we are different from our bodies.... I believe that the body is a vessel where the soul is contained. I am still me, no matter what state my body is in. Figure drawing put me back into my body, and now I appreciate any shape of the human form."

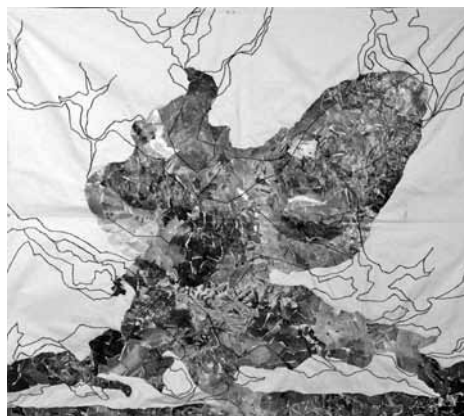
8 June/July 2016

Sara's works of art speak for themselves. She focuses today on transparent watercolors and layering with rich colors. She aims to follow patterns of the Neo-Expressionism movement, embellishing mark making and the creative process. "I want to keep things alive, as art has kept me alive."

Sara has served as an example of the strength residing within all of us to continue on, no matter what our circumstance is, what it may have been, or what it might become. As an artist, I admire her work and aspire to create in similar ways. As the figure has taught Sara about her soul, Sara's soul has taught me about myself and the world around me.

I hope you all find inspiration in her story as artists and human beings. To see her artwork, visit her website at <http://www.sarajaneparsons.com>. You can also email her at [janoparsons@gmail.com](mailto:janoparsons@gmail.com) for more information.

(continued from page 1)



by Eleanor Annie Morris-Swank Galveston Bay by

was little I used to gather my easel, colors, and drawing pad and begin to paint. Traveling has been a large part of my life, and I began to use places I've been

(continued on page 12)

## Voices of New Board Members continued

(continued from page 6)

the gallery, and the fresh, "come on in" attitude of members and participants. As a newbie artist I feel very welcomed and encouraged. While I have a degree in graphic design, my background spans 30 years in marketing, corporate communications, and investor relations at ad agencies, health care companies, and real estate firms. I formed and headed the Mark-Comm department for the nation's largest publicly held Medicare homeware agency. The highlight of my corporate career was when I stood next to the CEO when we rang the bell at the NYSE upon bringing the company public. In my free time, I take care of my 92-year-old parents who live with my amazing hubby of 33 years and me. I also have some products I developed — "The Lucky Wedding Penny" and "Baby's First Penny," and I just launched my website! Yahoo! [www.agregoryart.com](http://www.agregoryart.com)

**Frank Griffin, Building Director:**

I am a retired Chemical Engineer, and my retirement hobby is woodworking. I especially love working on exotic wood, and am primarily self-taught. My wife, Jan McNeill, is of course quite active in WAS-H, so I have been an active behind-the-scenes supporter of WAS-H for a long time. Jan enjoys commissioning me to create exotic wood frames for her watercolors.



**Diane Petersen, Membership Co-Director:**

I started doing watercolors as a

(continued on page 12)

## Volunteer of the Month, Diane Petersen

by Jan McNeill, Education Director



Diane Petersen is a newer member of WAS-H who is fond of helping out. As a member of the WAS-H Senior Class, she comes early to help in any way, such as setting up tables and chairs, getting the coffee going, bringing extra food, etc. She has also helped with Take-Ins, gives rides to Paint-Outs, has helped with the photography of WAS-H events, and helped in the WAS-H library. Diane is one of those people who sees a need and "just does it."

Doing watercolor at WAS-H has been beneficial to Diane's life in many ways. Making friends, learning new techniques, borrowing books from a members' only library, lots of available advice, or just watching a demo. From involving herself with taking pictures for the Washrag, to sign-ins, set ups, and even cleanups, she enjoys it all.

Diane Petersen was born and raised in Seattle, WA, and lived in the foothills just south of Seattle, with a view of Mount Rainer in her back yard! She has two grown boys, five grandkids, a great granddaughter, and another on the way. Through the Internet, she keeps in touch with all of them as much as possible. She flies out at least once a year to see them all. She moved to Houston in 2012.

She began painting in 1994 as a

hobby, while recovering from cancer.

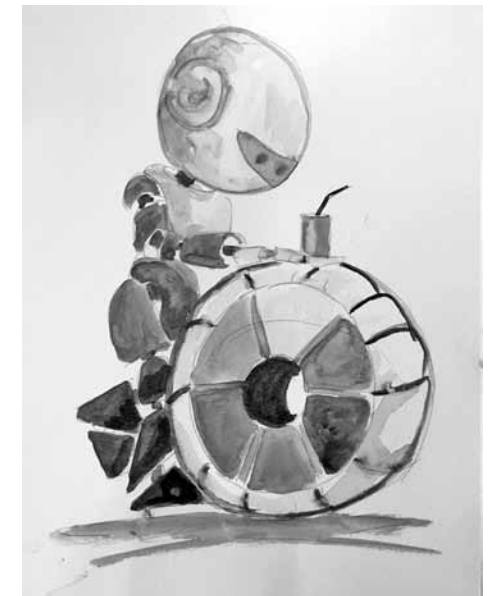
"When you are part of a very active team, always on the go, photography, remodeling houses, hunting, camping, raising two wild teenage boys, it feels like your world has been shattered. Sitting at a window one morning, watching a spider respin his web, yet again, I realized life was still good. I was still alive, and right then I promised myself to smile every day, no matter what."

Watching TV one morning, Diane came across PBS's Bob Ross presenting a painting demo. We all know Bob Ross, his familiar "Happy trees, mountains, lakes and hills, and his pet squirrel." This was her new adventure. Using acrylics, not oils, she began painting. Self-taught, she bought books and going from page to page, she would draw and paint. After doing two of Bob Ross's books, she tried a watercolor class and was hooked. "Although I do an acrylic now and then, watercolor is my favorite medium. Learning is an adventure for me. If I can learn just one trick, if it's help with technique, planning, or just getting the right shade in the right place - that's learning. Most recently I learned to do a black and white value sketch from a Ken Hosmer DVD. Here I had been painting for so many years, not knowing what I was missing, and just this one little idea exploded in my mind! (I wanted to jump up and yell "I GOT IT!") Now I have to put it to good use. I know it's not a rule for every painting, but it really does help."

"My goal in life is to make everyone happy, if only for a minute or two. My painting and drawings are what make me happy. When I am at my worktable, I am lost in another world. By the way, that spider web was one of my first paintings."

## Reaching Out to U of H Graduate Students!

by Jan McNeill, Education Director



Combining Computer Science with Watercolor

Requests for classes can come in all shapes. WAS-H recently responded to a request from the U of H Computer Science Department. One of our WAS-H members, Guilia Toti, who is a student at the U of H, wanted a different end-of-the-year event, namely a beginners class in watercolor. Luckily, our WAS-H teacher Joanie Hughes was able to provide a wonderful beginners class for the students. They had great fun painting a robot pushing a color wheel as well as an image of a cougar, the U of H mascot.

## New Members

Chaitanya Alli	Linda MacDonald
Charles Browne	Ghina Machkhas
Lind Butler	Pat Pease
Jann Cobler	Susan Pinkerton
Danielle Frost	Christine Shenkman
Jeannette	Ahlene Shong
Golubovic	June Spencer
Jhershiera Jelsma	Lee Ann Stiles
Diane Landon	Colleen Williams

9 June/July 2016



# May Gallery Show

5 – 8 Year Old Category

by Louise H. Bateman and Terry Baird, Gallery Co-Directors

## 1st Place, Cornel

**Caleb**, Rainbow

“Lizard,”

Amazing! Great composition, choice of colors, technique.



## 2nd Place, Gabby

**Kitagawa**, “Longhorn

Field,” Love the watercolor washes in the sky and the use of shadows on the animal.



## 3rd Place, Tad Hruska,

“Kraken,” Love the use of humor along with the sense of drama! Good job with the watercolor washes.



10 June/July 2016

# May Gallery Show

9 – 12 Year Old Category

by Louise H. Bateman and Terry Baird, Gallery Co-Directors

Christie was impressed with the level of the student’s artistic abilities and/or the use of creativity to enhance the composition, or to simply add an element of humor.

After much deliberation, the awards were as follows, with Christie’s comments

**HM. Mia Harrington**, “Funny Bunny” - Love the use of watercolor washes and the “complementary” color scheme! The “wet-into-wet” technique gives bunny a “soft” look... Love it!

**HM. Lily Capper**, “Wading Game,” Great composition; beautiful use of watercolor washes.... Love this painting!

**HM. Shivansh Velmurugan**, “Feeding Frenzy,” Love the thought process involved with this composition! Love the background washes and techniques used.



## 1st Place, Shriya

**Alli**, “Feathers in Blue,” Beautifully done; excellent use of “value” in the bird’s head and neck; a wonderful work of art!

## 3rd Place, Malu Brito Schmidt,

“Violet Cat,” Wonderful composition; great job in drawing and painting the cat; not sure if it was intentional, but I love the use of purple for the cat!



## 2nd Place, Cami Crump,

“Psychodelephant,” Excellent use of color; love the watercolor technique used; fabulous drawing of the



11 June/July 2016



Voices of New Board Members  
continued

Scholarship  
Awarded to HSPVA  
Senior continued

August Prospectus Theme: Experimental

Take-In: Sat., Saturday, August 6, 10 am to 12 pm  
(Paintings can be brought in before Saturday.)

Reception: Sunday, August 14, 4 to 6 pm  
Pick up paintings: September 9, 10 am. - 3 pm

Questions: Chris Bunger, ccbung@gmail.com, 713-501-8089 or Diana Burke, vdburke@gmail.com, 936-828-6453

(continued on page 8)  
recovery from cancer. I needed to do something. I am always looking to stay busy. I have volunteered for many projects. (Care giving, home remodeling, and many other subjects.) I like helping out where ever I can. Belonging to WAS-H gives me the chance now to be with others and make friends.



Alex Tyson,  
Outreach  
Director:

I'm a native Houstonian, and a 1972 Duke graduate with a degree

in Art History. Right after graduation I worked as a medical artist at M.D.

Anderson, and then taught art to children in an after-school program and at the Contemporary Art Museum. I took evening classes at Glassell in the '70s, and I have been working in real estate for over 33 years. I've been married for 42 years to George Tyson and have three children Hart, Kimball and Elizabeth, as well as two grandkids, Aidan and Ayla. I started dabbling in watercolors four years ago while studying with Arthur Turner. There I met Lynne Woods, who got me involved with volunteering at Texas Children's Hospital Cancer Clinic, and then I joined WAS-H. The rest is history. I'm excited about working with all the members of WAS-H and contributing to our outreach program.

(continued from page 8)

as inspiration to my art. Using materials I enjoy, I soon created a cohesive body of work based on place, maps, fabrics, and design."

Congratulations to you, Eleanor, and we at WAS-H wish you all the best in college and your future career.

Shopping online? Click

SMILE.AMAZON.COM  
\$.05 to WAS-H  
for every \$10 you spend  
It adds up!

**Juror: Cookie Wells** received her B.S. degree from Lamar University and has studied at the Glassell School of Art. Her work has been exhibited at The Houston Art League, The Cloister Gallery and Archway Gallery.

She states that, "Two quotes sum up the whole of who I am as an artist. Henri Matisse said, "Color was not given to us to imitate nature. It was given to us to express our emotions.." And Henry Miller said, "Paint what you like and you will be happy." Always seeking ways of using color and texture to express emotion, movement and action is my own personal expression."

**Eligibility and Requirements:**

- Artist must be a current WAS-H member.
- Up to 3 entries per artist.
- Fee of \$10 per entry.
- Artwork Regulations:
  - Only original artwork accepted. May not be a likeness of another's work, (i.e., painting, drawing, photograph-digital image or print).
  - Completed in the last 24 months.
  - Not painted under supervision or in a class.
  - At least 80% watermedia.
  - Surfaces: paper, Claybord, or Yupo only.
  - Has not won a WAS-H award or been in International or Annual Member's Exhibits.
- Framing Regulations:
  - No restrictions on frame style or width.
  - Any color of mats and liners
  - Frame width must not exceed 2".
  - Must be strung with wire for hanging.
  - Plexiglas, if glass is needed.
  - Paintings not to exceed 48" in height or width, frame included.

**Awards**

- Cash Awards for 1st - \$100 / 2nd - \$75 / 3rd - \$50.
- Honorable Mentions awarded a ribbon – no cash.
- Only one award per artist.
- Winners are notified by phone.

**Sales**

- WAS-H accepts a 20% donation for sale of artwork.
- Artwork must remain in gallery for duration of the show.
- Price does not include sales tax, which will be added at time of sale.
- A 5% fee is taken out of credit card sales.
- All sales include frames.

**Liability**

WAS-H will not be liable for damage before, during, or after the exhibit. Artwork must: adhere to these guidelines, be appropriate for a family venue, and be acceptable to the juror.

**Abbreviations**

Medium: WC-Watercolor, A-Acrylic, G-Gouache

Surface: P-Paper, YP-Yupo, CB-Claybord

Registration Form (NOTE: Each painting MUST be titled).

Name \_\_\_\_\_

Email \_\_\_\_\_

Tel. (H) \_\_\_\_\_ (C) \_\_\_\_\_

Title #1 \_\_\_\_\_

Price \_\_\_\_\_ Medium \_\_\_\_\_ Surface \_\_\_\_\_

Title #2 \_\_\_\_\_

Price \_\_\_\_\_ Medium \_\_\_\_\_ Surface \_\_\_\_\_

Title #3 \_\_\_\_\_

Price \_\_\_\_\_ Medium \_\_\_\_\_ Surface \_\_\_\_\_

I grant WAS-H permission to reproduce the artwork for publicity, documentary, or educational purposes. I accept the terms of the prospectus and confirm that the artwork meets the stated regulations.

Signature \_\_\_\_\_ Date \_\_\_\_\_

Attach this label or a facsimile to the back of each painting.

Name \_\_\_\_\_

Tel. \_\_\_\_\_ Price \_\_\_\_\_

Title \_\_\_\_\_

Framed Size \_\_\_\_\_x\_\_\_\_\_ Medium \_\_\_\_\_ Surface \_\_\_\_\_

Name \_\_\_\_\_

Tel. \_\_\_\_\_ Price \_\_\_\_\_

Title \_\_\_\_\_

Framed Size \_\_\_\_\_x\_\_\_\_\_ Medium \_\_\_\_\_ Surface \_\_\_\_\_

Name \_\_\_\_\_

Tel. \_\_\_\_\_ Price \_\_\_\_\_

Title \_\_\_\_\_

Framed Size \_\_\_\_\_x\_\_\_\_\_ Medium \_\_\_\_\_ Surface \_\_\_\_\_

THE LARGEST ART MATERIALS & INSTRUCTIONAL EVENT IN THE WORLD

*Artisan Materials*  
**EXPO**  
2016  
CREATIVE ASCENSION  
SANTA FE, NEW MEXICO

Sept 30-Oct 2, 2016  
Buffalo Thunder Resort

Sept 29 - Oct 2  
**ART WORKSHOPS!**  
Choose from 118+ Art Workshops  
And 60+ Incredible Instructors  
REGISTER NOW!

Sept 30 - Oct 2  
**ART SUPPLY SALE!**  
Free Admission to Vendor Floor  
Featuring 72 Booths of  
Heavily Discounted Art Materials

We would like to welcome  
ENCAUSTIC ART INSTITUTE &  
INTERNATIONAL ENCAUSTIC ARTISTS RETREAT

artisan  
the Artist's  
magazine

REGISTER NOW AT EXPOARTISAN.COM

**IN-N-OUT SHIPPING**

**Wanted: Local Artists to fill "Art Wall"**

In-N-Out Shipping is a retail postal store in West Houston. We have dedicated a space for an "Art Wall" with the goal of providing exposure to local artists, while enhancing the culture of this growing and diverse neighborhood in the Westchase District.

We are looking for artists willing to show their work for four to six weeks. Perspective buyers are referred to the artist, who receives all profits from sales. Our space is 10 X 10 feet, and is equipped with a cable system for easy and secure hanging. Our store is located in the Royal Oaks Village Center, at 11807 Westheimer at Kirkwood, 77077.

The store is owned by Rich and Carol Wetterauer. Carol is a member of WASH.

If interested, please contact us:  
innoutshipping@gmail.com



*A monthly publication of the*

**Watercolor Art Society - Houston**

1601 W. Alabama at Mandell, Houston, TX 77006

713•942•9966 • [www.watercolorhouston.org](http://www.watercolorhouston.org)

NON PROFIT  
ORGANIZATION  
U. S. POSTAGE  
**PAID**  
HOUSTON, TEXAS  
PERMIT NO. 2169

## Quality Giclee Printing & Custom Framing



**Canon iPF6400 Giclee 24" Printer**

- ☺ Top quality Arches Paper
- ☺ Color Corrections with CS5 Photoshop
- ☺ No Minimum Order

## Full Service Frame Shop

- ☺ Top quality Custom Frames and Mats
- ☺ 20% WAS-H Member Discount
- ☺ No Minimum Order

**By Appointment Only - Call**

**Les McDonald, Jr.**

2623 Stoney Brook Drive • Houston, TX 77063

(713) 977-4729

**We Offer a 20% DISCOUNT  
To All WAS-H Members!**



**SUPPLY  
ON MAIN**  
**2711 Main St.**  
**Houston, TX**  
**77002**

If you need  
more directions  
Please call

**ART SUPPLY**  
**(713) 652-5028**



**email vikki: [artsupply@swbell.net](mailto:artsupply@swbell.net)**