



April 2016

Washrag  
N E W S L E T T E R  
Watercolor Art Society - Houston

## 2016 International Exhibition Opens to Glowing Reviews

by Dawna Hasara,  
International Exhibition Director

**Powerful...Creative...Sophisticated...**

**Competitive ... Overwhelming!** Those are just a few of the adjectives our Juror and attendees used to describe this year's exhibition. Anyone who has had the opportunity to visit our gallery during the 39th International Exhibition will echo those thoughts as they recall the wonderful display of color, composition, and originality expressed across the board in all the works shown.

Sunday, March 6, started off with a buzz as guests began arriving at the gallery to view Anne Abgott's afternoon demo. By the time she started, at 2:00 pm, the standing-room only crowd was ready for an instructive demo, and they weren't disappointed. Anne's painting style and ability to convey techniques, tips, and instruction were all soaked up by the listeners as she walked us through her methods for mingling colors and creating "pop" in her paintings.

At the conclusion of the demo, the next stop for our guests was the grand opening of the gallery, where they were dazzled by 97 gorgeous works of art on display. Our members, visiting artists, and guests enjoyed the refreshments while I was able to meet many of the artists whom I had been conversing with leading up to the exhibit.

What a great honor to WAS-H that artists and guests from Russia; Canada; Philadelphia; Baton Rouge; and Kenosha, WI, to name but a few, traveled to the



*1st Place: Irish Spring by Karen Lindeman, Katy TX*

gallery to participate in our event. WAS-H award winning artists Karen Lindeman, Lynda Jung, Susi Telage and Daniela Werneck were present along with new Elite Signature Members Sam Caldwell and Nancy Grob. I was so pleased to be able to visit with artist Sujit Sudhi who with his wife flew in from Kenosha WI; artist Cheryl Coniglio who traveled from Philadelphia, and artist Carol Creel from Baton Rouge. Other artists in attendance, from Austin and Georgetown, TX, and the Greater Houston area, who came out to support the exhibition with their presence meant so much to me personally and to the entire

WAS-H organization. Thank you!

At the conclusion of the judging on Saturday, Juror Anne Abgott stated: "I am overwhelmed by all entries and am delighted to be here and see first-hand the talent and creativity. It is so much better in person! Every entry in this show deserves an award. As juror, I try to balance the show and create a "wow" factor. A strong showing of landscapes, figurative, and abstract pieces in this exhibition resulted in heightened competition, making it a

*(continued on page 5)*

### April Events Calendar

**Monthly Show Take-In – Apr. 2, 10 am - 12 pm**

**Board Meeting – Apr. 4, 9:30 am**

**Monthly Show Reception – Apr. 8, 6 - 8 pm**

**Paint-In – Apr. 9, 9:00 am - 3:30 pm**

**Robin Avery**

**General Meeting/Annual Election of Officers – Apr. 10, 1:30 pm**

**Demo: Lesley Hymphrey**

**Paint-Out – Apr. 16, 9:30 am - 3:30 pm**  
**Iola, Texas**

**Wed. Model Lab – 12:30 - 3:30 pm,**

**Open Studio – Fridays, 10:30 am - 2:30 pm (when no workshops are scheduled)**

## WAS-H OFFICE

1601 West Alabama at Mandell  
Open Tuesday–Saturday  
10:00 am to 3:00 pm.  
For information please contact:  
Martin Butler, Administrative Assistant  
713-942-9966  
[www.watercolorhouston.org](http://www.watercolorhouston.org)  
email: [was-h@sbcglobal.net](mailto:was-h@sbcglobal.net)

## WASHRAG INFORMATION

DEADLINE for copy, photographs and advertising for the *Washrag* is 4:00 pm, the 5th of each month except June and December. Material not received by the deadline will appear in the next month's *Washrag*. Please submit items via email or typed.

## ADVERTISING RATES

Effective September 2001

Full page (7.5" by 10") \$75

Half page (7.5" by 4.7") \$50

Quarter page (3.7" by 4.7") \$25

One column (30 words) \$15

Area Teachers Listing \$25 (per year)

Payments for *Washrag* ads must be received no later than the 10th. Please mail check to WAS-H.

Column ads should be typed. All other ads must be print-ready. Photos must be 300 dpi. Submit material to:

WAS-H 713-942-9966

1601 West Alabama, Houston, TX 77006,  
or via email to Rosalie Ramsden, [ramsdendesign@earthlink.net](mailto:ramsdendesign@earthlink.net). Please put WAS-H in subject line of your email.

## Wednesday Model Session

The Wednesday Model Session group will continue to meet every Wednesday, 12:30-3:30 (unless there is a workshop scheduled) at WAS-H.

Please email me [crensink.art@att.net](mailto:crensink.art@att.net), and I will let you know the model each week before the session.

So y'all come with your drawing and painting gear and do your own thing for three quiet hours of model time. It is a wonderful opportunity. Carol Rensink, 713-299-4136



Recent model for Wednesday model lab group



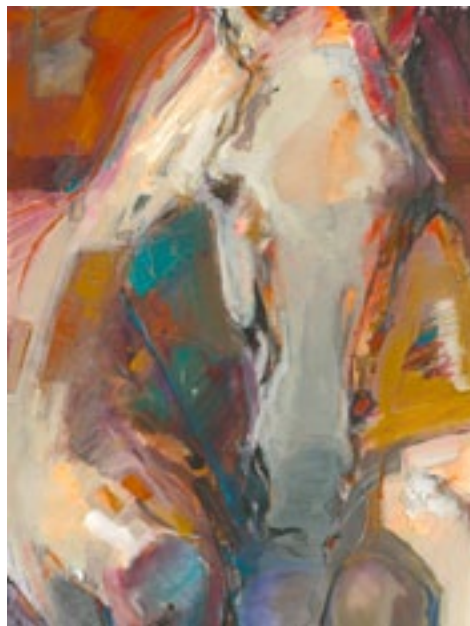
2 April 2016

# General Meeting/Annual Election of Officers ~ April 10

## Social 1:30, Meeting 2:00

## April 10th Demo Artist: Lesley Humphrey

She says, "I consider that the most important aspect of my work is not about my ability to render a beautiful image, but for my truth and passion to 'show up' on the paper, and by virtue of my demos, encourage you to do the same. My WAS-H demonstration will be about expressive watercolour techniques, as I create a dynamic, bold, equestrian-themed subject using my '12 Lights' approach. I will paint a horse in watercolor, gouache or acrylic without use of any external reference — pulling the image and idea from "internal content," which is only possible with a strong understanding of the 12 lights." (See [www.http://lesleyhumphrey.net/lessons/lesson-1-the-12-lights/](http://www.http://lesleyhumphrey.net/lessons/lesson-1-the-12-lights/)).



Gang of 6 by Lesley Humphrey

## March Demo Anne Abgott by Beth Graham

At the March 6 WAS-H meeting, International Exhibit jurist Anne Abgott gave a demonstration that provided a peek into the upcoming five-day workshop she presented March 7-11. Anne is a Signature Member of both the AWS and the NWS and past president of the Florida Watercolor Society, and has won over 100 awards in competitive shows. She has presented over 100 major workshops in Canada and the U.S., is the author of the book *Daring Color*, and has several DVDs available. Anne encouraged everyone to continue to master new tools, and she explained how she utilizes Photoshop, Mobile Monet, and Waterlogue programs/apps.



Ms. Abgott prefers to "mingle" colors on her paper, rather than mixing colors on her palette, and so selects paint colors

(continued on page 3)



## From the President

by Beverly Aderholt, President

Dear WAS-H Members,

As Lynne prepares to introduce the new 2016-2017 Board to you at the General Meeting in May, I want to share stories about ways the present Board has worked above and beyond their stated duties to make WAS-H thrive.

Besides managing programs, Lynne has worked to finalize strategic plans for future years and increase funds with grant money. Alice has written get well and sympathy cards to all distressed members. Betty, in addition to keeping us on track financially, has organized our Members Directory and helped with the new website. Karen Stopnicki, after setting up the new website, sends out eblasts almost weekly and has an active kindergarten son. Mark has increased publicity with quarter-and-half-page ads in most local papers and an interview on NPR.

Rosalie just keeps on putting together a beautiful newsletter in spite of problems with vision. Ann and Karen Lindeman welcome each new member (now over 600) Terry and Louise change themes for shows to constantly increase entries. Jan serves as our unofficial historian, adds night classes and new offerings, and fills up almost every class. Irene has worked with Mary Treanor to clean up and organize our library and is now planning new carpet and paint for our interior, besides providing refreshments for all gatherings. David has set up and monitors all annual check-ups, and had five trees removed, plants fed, and sprinkler system repaired. Mojan and Dawna and Patty have produced two spectacular exhibitions. Theresa is ready for a bigger-than-ever art fair. Pam manages our outreach and is working on a second annual Intergenerational show. Sally funnels volunteers to the rest of us and works at the computer for many shows. Mary, besides managing the library, has labeled all of the paintings on our walls. I don't have space to add last year's Board, but will say that Peggy, no longer on the board, still comes to prune and water our plants. Genevieve, living in England, has maintained a complete and stunning presence for WAS-H on Facebook. Our past presidents, Jan Shrader and Susi Tellage, stay involved as they can and provide constant support with our programs.

And you, our members, have "shown up." Patty Armstrong told me that every member she asked to help with the International Exhibition responded with

"I'll be glad to."

Just wanted you to know!

Warm regards to all,

Beverly

(continued from page 2)

and brands according to how the paints interact with other paints (list provided to workshop attendees). She reminded everyone that shadows must reflect both the color of the casting object and the color of the receiving surface. In the demonstration painting, Anne showed how she mingles multiple colors in shadows, using bright, beautiful hues. She explained how a wet 36 round brush, loaded with paint from a puddle, is used for the colorful mingling on wet 300# paper. An angled or squared flat is used with paint straight from the well to add pure pigment to darken areas in the painting. One of her favorite darks is mingled indigo and brown madder (or quinacridone burnt scarlet). Anne is a big advocate for 300# paper, but shared that if you're painting on 140# paper, using hot water will extend the time the paper

(continued on page 9)

## Member Teachers Listing

### Sallie Anderson Studio

Galveston, 409-763-2265

### Diana Brandt, Memorial, Houston

Beginners to Intermediate, 713-560-2324  
[watercolor70131@yahoo.com](mailto:watercolor70131@yahoo.com)

### Barbara Jeffery Clay, AWS

116 Huckleberry Dr.  
Lake Jackson, TX 77566, 979-292-8058

### Susan Giannantonio, Katy, TX, and

Mayville, NY, [lucholiz@gmail.com](mailto:lucholiz@gmail.com),  
[www.susangiannantonio.com](http://www.susangiannantonio.com)

### Caroline Graham, WAS-H

Museum District  
713-664-6589, [cgrahamart@hotmail.com](mailto:cgrahamart@hotmail.com)

### Joanie Hughes

For Beginners (inside 610), 713-426-6767,  
[joan-hughes@comcast.net](mailto:joan-hughes@comcast.net)

### Gay Paratore, BA, MEd, NWS, NSA,

TWS, WAS-H, classes Tues. - Butler  
Longhorn Museum, Wed. - Santa Fe Studio,  
Aug. Acadia Workshop Center, 409-316-  
1005, [www.nsartists.org](http://www.nsartists.org)

### Carol Rensink, WAS-H

Figure Drawing & Anatomy  
713-299-4136, [crensink.art@att.net](mailto:crensink.art@att.net)

### Mary Rustay, Cell 713-703-1533 Water-

color for seniors at WAS-H, no charge.

### A.J. Schexnayder, AWS, NWS, WAS-H

N.W. Houston, 281-444-7524  
[aj-schexnayder@att.net](mailto:aj-schexnayder@att.net)

### Shirley Sterling, NWS, TWS, WFS, WAS-H

Clear Lake, 281-474-4214

### Mary Wilbanks, NWS, WHS, WAS-H,

Workshops and critiques. 281-370-7879,  
[marywilbanks@gmail.com](mailto:marywilbanks@gmail.com)



3433 West Alabama, Suite C, Houston, TX 77027  
713.877.8466 Facsimile 713.877.8557  
[craig@speedypainting.net](mailto:craig@speedypainting.net)

3 April 2016



## Saturday Paint-In

Margaret Bock and David Muegge, *Paint-In Co-Coordinators*

**Shapes**  
**Robin Avery**  
**Sat., April 9, 9:30 am - 3:30 pm**  
**(setup at 9:00-9:30)**



*Listen to This* by Robin Avery

We are going to take a look at some great paintings and examine the shapes within each one ... talk about shapes... experiment with painting several little paintings and change the design by changing the size location and repetition of shapes...Doing several paintings

### Supplies

- Scissors
- Black Sharpie
- Tracing paper 8x10 is fine
- 4 1/8 sheets of Watercolor Paper
- > 4 8x11 sheets of white bristol board or tag or sketch paper( anything a bit heavier than typing paper)
- Rubber cement..
- If you have sheets of gray and black construction paper ... (I will bring some)
- Regular Watercolor Paints/brushes.....
- 6-10 small items with interesting shapes and edges ... look in your kitchen or toolbox ...

- sack lunch ....

## Paint-Out Calendar

### 2016

April 16, Iola, Texas      May 21, TBA

4 April 2016

## Paint-In Calendar

Margaret Bock and David Muegge, *Paint-In Co-Coordinators*

### 2016

May 14, **Les McDonald**, Realism  
June 11, **Gerry Finch**, Yupo  
July 16\*, **Kim Roots**, Collage  
\*Third week instead of second.

## Thank you, Carla Gauthier

Carla demonstrated ways to use values to enhance a painting. She was tireless in helping participants utilize her techniques. I believe she did not stop talking during the day except when she was made to take a break for lunch. Interest was high and a pleasant and fruitful day ensued. Thanks Carla!

## Thank you, Erik Sprohge

Erik Sprohge began his Paint-In by starting a painting with which he introduced his theme for the day. His theme was leading the eye through a painting with line, color, and value. Participants followed his lead, and a show-and-tell with everyone's paintings concluded the day.

It is always great to see the individual interpretations to the same subject. It was a happy, interesting day.

## Splash

Pat Dispenziere's watercolor painting *Old Winery Wall* was selected by Tom Francesconi to be in the Western Colorado Watercolor Society 24th Annual National Exhibition 2016 in the Art Center of Grand Junction, CO, March 1 - April 2, 2016.

## WAS-H Future Major Workshop Artists & Dates

### Mary Whyte

<http://www.marywhyte.com>

October 10-12, 2016

### Stephen Quiller

March 13-17 2017

[www.quillergallery.com](http://www.quillergallery.com)

### Michael Reardon

[www.mreardon.com](http://www.mreardon.com)

October 9-13, 2017

### Iain Stewart

<http://iainstew.fineartstudioonline.com>

March 5-9, 2018

## Monthly Gallery Show Themes

### 2016

- April - General/No Theme
- May - Intergenerational - Animals Real or Imaginary
- June - General/No Theme
- July - Student and Teacher Teacher Appreciation Show
- August - Experimental
- September - City, Landscapes, Seascapes
- October - Members
- November - General/No Theme
- December - Small Paintings

### QUESTIONS:

- Louise H. Bateman, Gallery Co-Director
  - [Louisehbateman54@gmail.com](mailto:Louisehbateman54@gmail.com)
  - 713-703-6889
- Or
- Terry Baird, Gallery Co-Director
  - 713-523-9008

*Shopping online? Click*

**SMILE.AMAZON.COM**  
**\$ .05 to WAS-H**  
**for every \$10 you spend**  
**It adds up!**

## NEW! Avante Garde Workshop with Carol Carter, Artist

by Haley Bowen

### June 3-5, 2016



*Breathe* by Carol Carter

Come learn new and free ways to express yourself in watercolor and acrylic with internationally recognized artist Carol Carter. Carol will conduct a new avant-garde workshop at WAS-H, Friday-Sunday, June 3-5. Register online at [www.watercolorhouston.org](http://www.watercolorhouston.org).

Carol says, "Having grown up in Florida, my strongest visual impression of an environment for human activity is water. In much of my work, water provides the setting for anonymous figures. For me, the watercolors and acrylics of nudity and landscape hold a special place in gallery work. Each aspect of my work is mysterious, seductive, intense, and inviting.

"The nude swimmer — in an evocative and sensual painting — is a signature theme."

Carol will demonstrate her technique of wet, loose watercolor and will illustrate the use of saturated color with wet

*continued on page 9)*

## 2016 International Exhibition Opens to Glowing Reviews (continued)

*(continued from page 1)*



*2nd Place Tattoo Guy* by Mark McDermott, Anchorage Alaska

challenge to choose just a few award winners. My advice for all artists is to never give up and to keep entering works into as many shows as possible."

The winners are listed below. Congratulations to everyone involved for a successful 39th International Exhibition! Show catalogs are available for purchase at the WAS-H gallery.

★ First Place: Karen Lindeman, Katy TX

★ Second Place: Mark McDermott, Anchorage Alaska  
★ Third Place: Denise Athanas, Mt. Pleasant, SC

Lloyd Albers Memorial Award: Brenda Cretney, Brockport NY  
Jack Bowen Award: Kristi Grussendorf, North Logan, UT  
Board of Directors Award: Judy Bush, Austin, TX



*3rd Place: Within Bounds III* by Denise Athanas, Mt. Pleasant, SC

### Merit

### Awards:

Lynda Jung, Porter, TX;  
Tamara Kontrimas, Sugar Land, TX;  
Dongfeng Li, Morehead, KY; Susenne Telage, Weston Lakes, TX;  
Daniela Werneck,

Katy, TX

**Honorable Mentions:** Mohammad Ali Bhatti, Houston, TX; Ken Call, Northbrook, IL; Carol Creel, Baton Rouge, LA; Tom Francesconi, Homewood, IL; Dawna Hasara, Spring, TX; Ashish Irap, Thane, India; Teresa Kirk, Pembroke Pines, FL

**New Signature Status Members:** Karen Lindeman, Tamara Kontrimas

**New Elite Signature Status Members:** Sam Caldwell, Sy Ellens, Nancy Grob and Carol Staub.

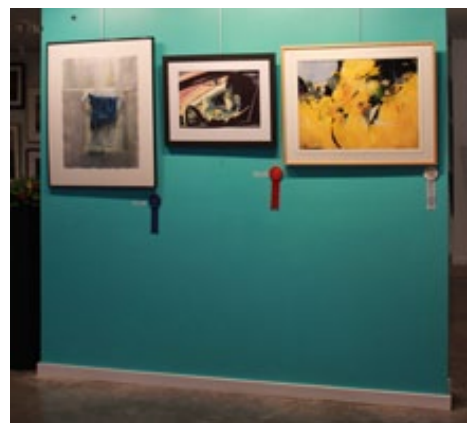
5 April 2016



# 2016 International Exhibition Awards



Artist Sara Parsons with her painting Gracie.



Winner's Wall



Artist Andrew Thompsen from Austin, TX and his mom re-enacting the pose from his painting Judy and Andrew.



Dawna Hasara congratulating Board of Director Award winner Judy Bush, Austin TX for First Light.



Awards Wall



Dawna Hasara and 1st place winner Karen Lindeman with Irish Spring.



Dawna Hasara presenting Daniela Werneck her Merit Award for The Imaginary Rainbow Rain.



Dawna Hasara presenting Lynda Jung her Merit Award for The Eye of the Spider.



Karen Lindeman receiving her Signature Status Certificate



Dawna and co-chair Patty Armstrong



Dawna presenting Nancy Grob with her Elite Signature Status Certificate



Dawna Hasara presenting Susi Telage her Merit Award for Art & Wine.



Dawna presenting Sam Caldwell with his Elite Signature Status Certificate



# Guests at 2016 International Exhibition



Karen Lindeman, Beverly Aderholt, Dawna Hasara and Anne Abgott



Esteemed artist Arthur Turner, Anne Abgott and Judy Bush



WAS-H members working at the hanging of the International Exhibition



## March Demo Anne Abgott (continued)

## Anne Abgott is the most fantastic painter!

by JK Toler

(continued from page 3)

stays wet, allowing for more flow and mingling.

One of Anne's newer paintings, *Off 5th*, received Honorable Mention in the annual Watermedia Showcase in the April issue of *Watercolor Artist* magazine. Several of her current paintings focus on the different values of shapes within the picture, rather than details. For these Anne utilizes Photoshop to help "posterize" her original photograph into shapes of lights, mid-tones, and darks. While painting the various shapes, she often turns the paper upside down to better attend to the shapes alone. Recently she has been working with opaque paints for these paintings, mixing her own pigments with casein and transparent watercolors, idea courtesy of Stephen Quiller.

Ms. Abgott's demonstration painting was beautiful and really exemplified her daring use of color. Participants enjoyed her warm, entertaining personality as well as the knowledge and information shared, and attendees of her workshop are in for a real treat.



(continued from page 5)

blossoms. She will instruct how to use color to enhance composition and how to paint quickly and dynamically. Each day will begin with a detailed demonstration using an original work as a starting point. Use of color, control of water, compositional considerations, and value structures will be covered. The afternoon will be devoted to individual instruction as well as group critique. Classes are informal, and discussion is lively and entertaining.

The workshop will also include tips on marketing your art, resources for supplies, documenting artwork, and developing personal imagery.



*You are invited to the Opening Reception of  
"Images of Reality"*

*An exhibition of paintings in a diversity  
of realistic styles and subjects*

**Friday, May 6, 2016, 6 to 8pm**  
**Cloister Gallery**  
**at the Christ Church Cathedral**  
**1117 Texas Avenue**  
**Houston Texas**

Duncan Simmons and Keiko Yasuoka,  
and their protégés: Connie Bosworth,  
Robbie Fitzpatrick, Marj Hales,  
Marvin Rhymes, Kay Stern,  
and Tommie Wilson





# Art on the Go

by shirl riccetti

## HAVE YOU EVER TRAVELED WITHOUT YOUR MUSE?

The scenario: Your art research is thorough, and you've chosen a particular trip or workshop. Your bags are packed, and the supply list filled, with new art splurges still in cellophane. You are filled with the hope and promise of creating a few masterpieces.

On your first day, in the throes of visual feasts of colors and enthusiastic participants, you freeze, and you realize that your Art Muse has refused to accompany you. It feels like standing in front of a picture window, looking at a magnificent landscape, glowing and glistening ... and you say, "Huh? What do I do now?"

This happened to me on a recent trip to Savannah and Charleston. It was not an art trip, per se, but a 6-day tour. I was ready, though, with my Ziplock bag of travel supplies, including a sketchbook that never left my side. Each moment that I tried to sketch, I lost interest. Earlier, I had envisioned drawing the magnificent cascades of vines and the intricate architecture designs and noting the colors.

Instead, I was enamored by the history of the Revolutionary War, the stoic resolve of the first settlers, and the solid construction of buildings still standing since those years. And the stories. And (of course) the food. I was captivated by the use of oyster shells, the history of the Gullah baskets, and the mysteries of the Low Country.

The gentleness and the quirky ways of both areas captured my attention with a smile. In Savannah, SCAD (Savannah College of Art and Design) showed its thumbprint in various buildings and, "arty" students meandering the city. We did manage a trip to SCAD's Museum of Contemporary Art.

10 April 2016

# Volunteer of the Month, Diane Burch

by Jan McNeill, *Education Director*



Diane Burch is recognized for her wonderful coordination and revitalization of the Open Studio (held Fridays at WAS-H from 10-2 when there is not a workshop).

De coordinated the first four sessions of Open Studio and plans to continue as time permits. As the initial coordinator, she reviewed the DVD that would be used in the class and gave attendees an introduction and overall summary of what to expect for the session. She also provided key supplies at class for purchase that accompanied the DVD's teachings. She followed up via emails to attendees with interesting tidbits as well as reminders on the next Open Studio.

This new role for Diane fits perfectly with her enjoyment of taking art classes from different artists, watching demos at watercolor societies, and reading art books/magazines. Over the years many different techniques, color decisions, drawing, and composition have taught her that there is always something new to learn – or relearn. So it is fun for her to work with all the artists' DVDs in Open Studio to help us learn and relearn so much from the pros.

On my last day, I looked at my little sketchbook. It had five pages of random unreadable strokes and words. So, where was my artistic Muse? She triggers and nudges and strongly urges me into capturing places and people on paper.

Well, I hope that my Muse enjoyed her vacation, because I certainly enjoyed mine!

Has this ever happened to you? And what did you do next? Please contact me with your stories.

carpe diem.

Shirl Riccetti sriccetti@comcast.net  
713-302-9085

## Gallery Artist Opportunity

Archway Gallery, 2305 Dunlavy, is now reviewing local artists' portfolios for membership openings. Check the website (archwaygallery.com) for requirements, and application form.

All information is given on the site, and gallery phone number is: 713-522-2409 for questions.

Archway Gallery will be celebrating its 40th Anniversary on Saturday, April 16. The gallery is one of the oldest artist-owned galleries in Texas, and started by some of WAS-H's members, including Hilary Page and Janet Hassinger. They were artists looking to showcase their works. Over the years, the band of 11 artists expanded to currently 32 artists. The gallery was initially situated in the Jung Center on Montrose. Since then, it has moved a few times, finally into its current 4000 sq. ft. location.

Over its 40 years, some WAS-H members who have been members of Archway have been Dick Barlow, Lyle Bates, Marsha Harris, Margaret Dobbins, Liz Hill, Vanita Smithey, Linda Swaynos, and Mary Wilbanks, to name a few.

Since workshops fly by so fast with so much learning, it can be hard to really capture a new idea or technique. The Open Studio allows attendees to take little bites of a video from a professional artist/teacher and practice it. One to four sessions with each teacher allow attendees to really "get it." One attendee told Diane that after working on Ken Hosmer's tape on linking dark values that she really felt a breakthrough and had more cohesive compositions!

Diane started painting in 1982 with Marge Brichler here in Houston, but full-time work allowed her to think about art only a couple of hours a week. After marrying and moving to Philadelphia, she jumped into art lessons. A subsequent move to Cornelius,

NC, allowed her to continue art in Charlotte and in Mooresville.

In 2000 she moved to San Diego, joined two watercolor societies, and took lessons from the very best watercolor teachers in the country. (Who wouldn't want to be paid to go to San Diego and teach?) She joined a co-op gallery. She also had fun being an artist-in-residence at different home and garden tours which were very prolific in California. Annually she hosted an "Art in my Garden" Party/Sale in her cute little house overlooking a canyon.

When her San Diego son and family decided to be vagabonds and visit the entire country over a two-year period, she returned to Houston to be near her daughter and renew her interests in her

old haunts. Even though she has moved around a lot, she feels she is a Texan.

While Diane's hobbies include traveling, gardening, and birding, she IS an artist. She loves to remind us how important it is to look at the world through an artist's eye, to take time to stop one's car, take a photo of something compelling, and/or do a value sketch. She encourages us to also to make an Artist's Date and go absorb something artistic – whether it be taking a zoo trip, painting a sunset, or looking for pretty flowers to paint.

Thank you, Diane, for your energetic and insightful coordination of Open Studio!

**We Offer a 20% DISCOUNT  
To All WAS-H Members!**

**ART**  
SUPPLY  
ON MAIN  
2711 Main St.  
Houston, TX  
77002

If you need  
more directions  
Please call

**ART SUPPLY**  
(713) 652-5028

email vikki: [artsupply@swbell.net](mailto:artsupply@swbell.net)



## Quality Giclee Printing & Custom Framing



**Canon iPF6400 Giclee 24" Printer**

- ☺ Top quality Arches Paper
- ☺ Color Corrections with CS5 Photoshop
- ☺ No Minimum Order

## Full Service Frame Shop

- ☺ Top quality Custom Frames and Mats
- ☺ 20% WAS-H Member Discount
- ☺ No Minimum Order

**By Appointment Only - Call**

**Les McDonald, Jr.**

2623 Stoney Brook Drive • Houston, TX 77063

(713) 977-4729

11 April 2016

# Paint-Outs February, March reports & April to come

by Mary Rustay, Paint-Out Chairman



We had a beautiful day painting out in February at the River Oaks Theater! We had a nice turnout of WAS-H artists, some totally new to plein air painting and others quite seasoned. Those who attended included Shirley Lee, Richard Linden, Xylina Wu, Denise Gowan, Veronica Koenig, and Mary Rustay, Chairman. A few others drove by and said hello, but did not paint. We had lots of fans who stopped and admired what we were working on!

## MARCH 5TH GALVESTON PAINT-OUT WAS SO FUN!

Our March Paint-Out on the 1st Saturday was so much fun and attracted some new participants and plein air painters.

We drove down to Pirates Beach West and rendezvoused about 9 am, some arriving earlier. We were welcomed with coffee and treats by our hosts, Sherry and Bernie Feldman. The group who eventually arrived included Mary (Paint-Out Chairman) and George Rustay, Carol Carranza, Elvia Carranza, Margaret Su and her husband C.H., Sewell and Hannah Martin, Chris Bunger, Adele Raber, Ann Sanders, Sharon Shackelford, and our hosts Sherry and Bernie Feldman. Colorful canvas chairs and rainbow colored umbrellas had been set out on the beach by Bernie for the artists to enjoy using! Everyone gravitated to the beach where we spread out and chose our subjects to paint.

12 April 2016

The morning sun on the water formed a glistening silver reflection from the horizon to the beach. It was mesmerizing! We were told to avoid the dunes because of rattlesnakes coming out of hibernation. It didn't take much to persuade us. We all took a break around lunch time to walk back to the house where Bernie had prepared a hot grill to cook hot dogs for everyone along with other goodies, and cold drinks. We all sat in the shade on the deck under the beach house and enjoyed a delicious lunch treat.



## DIRECTIONS TO APRIL 16TH PAINT-OUT IN IOLA, TEXAS.

Come paint lakes/tanks with reflections of clouds, pastures with cattle; country roads; scenic courthouse in Anderson, TX. as you drive up from Houston; old barn, etc. Our address is 11709 CR 112, Iola, Texas 77861. Many people will put this into their gps or map app. If so, they often show the house on the other side of the railroad tracks, but not ours, You must continue about 1.5 miles down CR 112 and we are on the left.

For those who do not use gps or apps, our farm is 1.5 hours from Houston. From central Houston, the fastest way to get there is to take 290 to Hempstead exit to Highway 6. Take Highway 6 toward College Station, and then take exit to highway 90 at Navasota. Turn right (east) on highway 90 north towards Anderson and stay on

Hwy 90 until you reach the town of Singleton (about 20 min.) As you pass through Singleton, the highway forks and you want to take the left fork to Highway 39 to Iola. Stay on Hwy 39 through town of Iola and travel about 5 miles to the very small town of Cross. Look for County Road 112 on the right (the Cross Baptist Church is on other side of 39 on your left). At CR 112, take a right, cross the railroad tracks (please watch carefully as there is no crossbar), and travel down farm road for about 1.5 miles to farmhouse and barns on the left side of road. Cars will be parked in front of the one-story house.

Wear shoes or boots for walking in pasture. You may want a change of clothes. Bring a hat, your sunscreen, mosquito repellent, your art supplies, board, jar of water, paper towels, easel or stool for your board and chair or stool for you, umbrella for shade, camera, etc. Bring your beverages and a sack lunch. Hope you can come. Let me know. Mary Rustay, Paint-Out Chairman.

PS: If you bring a non-painter with you, he or she can bring a book or a fishing pole — three tanks with reflections and fish. Possibly bluebonnets en route to and from Iola. Don't miss the picturesque courthouse in Anderson on Hwy 90 as you pass through; take a picture to paint later.

## New Members

Cedric Akue	Annette Palmer
Mary Conn	Marsha Reeves
Peggy Engells	Stephen Roddy
Mollie Jones	Ekaterina (Katia) Silina
Barbara Lopez	Bridgett Vallery
Cindy Luvender	Diane Walker
Nancy McMillan	Carol Wetterauer
Geoff Newton	

## May Gallery Exhibit

**Theme: “Animals: Real or Imaginary”**

**Purpose:** To offer a fun opportunity to grade school children to further their art experience by jointly creating a painting with a parent or other significant adult and showing their work in a gallery setting.

**Take-In: Sat., May 7, 10:00 am – 12:00 pm**

(Paintings also accepted previous Tues.-Fri. 10:00-3:00 pm with envelope attached to back of painting containing registration form and check.)

### Questions:

Louise Bateman - louisehbateman54@gmail.com/713-703-6889  
Pam Knox - pamknox@sbcglobal.net  
Haley Bowen - khaleybowen@gmail.com / 407-376-7352  
Terry Baird - 713-523-9008

**Juror:** TBA

### Eligibility and Requirements:

*We emphasize that the child do most of the hands-on painting and that the adult supervise / guide them through the creative process. We understand everyone participating is a talented artist, however, this show is to focus on the child's learning experience of creating, properly admitting, and showing a painting for jurying with the help of an elder mentor.*

- Paintings should be planned, created and framed by an intergenerational pair of artists (adult and child) as a collaborative, shared adventure.
- One painting per artist-adult/child pair.
- Adult artist must be current WAS-H member or Poe participant.
- Child artist must be between the ages of 5-12 and in elementary school.
- Fee of \$5 per entry.
- Artwork Regulations:
  - Original composition.
  - Must include a creature(s) (e.g. animal, bird, fish, reptile, bug, etc.) real or imaginary.
  - Completed in the last 24 months.
  - Watermedia (watercolor, tempera, acrylic, gouache, casein).
  - Surfaces: Watercolor paper (140 lb. or heavier), Yupo or Clayboard.
  - Size: 18" X 24" or smaller.
  - Painting has not won a WAS-H award.
- Framing Regulations:
  - Plain, simple frame no more than 2" wide.
  - Mats and liners, if used, must be white or off-white.
  - Plexiglass only. NO GLASS!
  - Paintings must be framed and STRUNG WITH WIRE for hanging.

### Awards

- Paintings will be judged in 2 different age categories: 5 - 8 years and 9 - 12 years
- Cash awards for first \$100, second \$75, third \$50.
- Honorable Mentions awarded a ribbon – no cash.
- Only one award per artist-pair.
- Winners are notified by phone.

### Sales

- Paintings can be marked not for sale –“NFS.”
- WAS-H accepts a 20% donation for sale of artwork.
- Artwork, including sold paintings, must remain on exhibit until Friday, June 3.
- Price does not include sales tax, which will be added at time of sale.
- A 5% fee is taken out of credit card sales.
- All sales include frames.
- 1st Place winner must remain on display at WAS-H until Friday, July 1.

### Liability

WAS-H will not be liable for damage before, during, or after the exhibit. Artwork that adheres to these guidelines will be accepted with the provision that WAS-H reserves the right to refuse any entries that are inappropriate for a family venue.

### Abbreviations

Medium: WC–watercolor, T–tempera, A–acrylic, G–gouache, C–casein.  
Surface: P–paper, YP–yupo, CB–clayboard.

### Registration Form (NOTE: Each painting MUST be titled).

Name	_____
Email	_____
Tel. (H)	_____ (C) _____
Title #1	_____
Price	_____ Medium _____ Surface _____
<i>I grant WAS-H permission to reproduce the artwork for publicity, documentary or educational purposes. I accept the terms of the prospectus and confirm that the artwork meets the stated regulations.</i>	
Signature	_____ Date _____

### Attach this label or a facsimile to the back of each painting.

Name	_____
Tel.	_____ Price _____
Title	_____
Framed Size	_____x_____ Medium _____ Surface _____



### Watercolor Art Society - Houston

*Art gallery, classes, and artistic enrichment*  
1601 W. Alabama at Mandell, Houston, TX 77006  
713.942.9966 • www.watercolorhouston.org  
**Gallery hours:** Tues.- Sat., 10:00 am - 3:00 pm

13 April 2016





A monthly publication of the

**Watercolor Art Society - Houston**

1601 W. Alabama at Mandell, Houston, TX 77006

713•942•9966 • [www.watercolorhouston.org](http://www.watercolorhouston.org)

NON PROFIT  
ORGANIZATION  
U. S. POSTAGE  
**PAID**  
HOUSTON, TEXAS  
PERMIT NO. 2169

*Brazosport Art League Watercolor Workshop*

# FABULOUS FLORALS

**PRESENTED BY**  
**Barbara Jeffery**  
**Clay, A.W.S.**

Thursday & Friday  
April 21 & 22, 2016  
9:00-4:00 each day  
BAL Studio, Center  
for the Arts &  
Sciences

Workshop fee:  
117.65 (50.00) non-  
refundable deposit



To register call Connie Middleton 979-299-6398. Supply list provided on registration. Class size is limited. Don't miss this great opportunity to learn from one of our own! Barbara has won many awards, is a published author and recognized as an outstanding teacher. We are so fortunate to have such an accomplished watercolorist

and experienced teacher in our area. In addition to being a BAJ member she is a signature member of the American Watercolor Society (AWS) the National Watercolor Society (NWS), Texas Watercolor Society (TWS) Purple Sage, Southwestern Watercolor Society (SWS), Taos National Society of Watercolorists (TNSW) and the Watercolor Art Society Houston-Signature elite. To learn more please visit Barbara's site [barbarajefferyclay.co](http://barbarajefferyclay.co)