



March 11, 2023 e-newsletter, Gratitude Edition  
A Bi-Monthly Publication

## From the President



Dear WAS-H Friends,

The International Watermedia Exhibition (IWE) is now on display in our gallery – it is truly fabulous! My heart is full with the dedication from the many volunteers, the hard work and talent of the many artists in the exhibition and perseverance of our few members recently awarded Signature and Elite Signature Status. The proverb “It Takes a Village to Raise a Child,” certainly applies to our annual IWE as we have a village making our events happen.

Our March General Meeting included a wonderful demo with award-winning artist Brenda Swenson, was followed by our IWE Awards Ceremony, and then capped with a beautiful reception to celebrate the IWE. The exhibition will be on display until the end of March. Please make plans to come by and see it in person, it really is spectacular!

Looking to April, our General Meeting will be on April 2<sup>nd</sup>. Our election of officers is at that meeting, so it is really important to come and cast your vote. Patrick Palmer, well-known artist and Dean of Glassell Studio School, will be our demo artist. Our Gallery Exhibit theme is Fences and Borders (Real or Metaphorical) with juror Diane Brahm.

The Awards and Reception will follow our General Meeting. Registration for the April 1st Paint-In with Kat Rodgers is waitlist only.

We have a number of classes on the schedule for April and May -- see our full class list [HERE](#). Registering for a class is a great way to enjoy the camaraderie of other artists and enhance your artistic skills. Our standard events such as Open Studio, Model Lab and Senior Group are going strong and welcome you to join in.

I want to extend a special thanks to Donna Van Fleet, our Vice President who graciously agreed to Chair the IWE event, and key volunteer leaders Patty Armstrong, Louise Bateman, Kathleen Church, Darlene Dittoe, Mike Doan, Paula Fowler, Carla Gauthier, Beth Graham, Maureen Lewis, Laura McMahon, Kelly Ann Medrano, Laura Mossman, and Katie Steck. Thank you to everyone else, too many to name, who helped in the days leading up to and the day of the opening.

I hope you will join with everything going on at WAS-H – thank you for being a part of our wonderful arts community at WAS-H!

Warm Regards,  
Karen Houston Stopnicki  
WAS-H President

---

## New Members & Orientation

Please welcome the five  
new members who joined  
us in February.

Lucy Goodrich  
Diane Keehner  
Lori Pannell  
Pam Soileau  
Sheilah Bofil

### New Members Orientation

Thursday, March 23  
from 10:30 am - Noon

While this session is designed for new  
members, everyone is welcome to  
attend. There is no fee, but online  
registration is required.

Click [HERE](#) to register

---

## Volunteers are the BEST!

### ***IWE Recrating Volunteers Needed Friday, March 31***

We can use a few more hands to help with the re-creating of  
IWE paintings on Friday, March 31. To sign up, click on the  
link below:

[Sign up Here](#)



### ***Menil Neighborhood Community Day Saturday, April 1***

#### About the event

Enjoy a fun afternoon of art,  
music, poetry, and family  
activities in celebration of the  
museum's vibrant  
neighborhood.

Participants include:

- DACAMERA
- Houston Ctr Photography
- Inprint
- The Menil Collection
- Rothko Chapel
- Watercolor Art Society
- Writers in the Schools (WITS)

To learn more about the  
event, click: Menil  
Community Day



### Be a WAS-H Ambassador!

The Menil Collection's second annual Neighborhood  
Community Day will be held on Saturday, April 1, 2023.  
WAS-H will participate again this year, but we need  
volunteers! We will have two tables, paint, paper, and  
brushes for the public to experience the joy of watercolor.  
If you like to talk about WAS-H, help others use

To be a WAS-H  
Ambassador,  
click [Here](#)

watercolor, and have the patience to also help children try the medium (lots of children attend this event), we could use you!

## *2nd Saturday Volunteer Gallery Assistant* (Pick a Month)

Each month, we need a volunteer to staff the Gallery on the 2nd Saturday. The volunteer will greet the public, answer the phone, and ensure the gallery is open to the general public. The hours are 10 am - 3 pm. If you can help out, please sign up for months when you are available. Sign up by clicking [HERE](#)

## April 2nd General Meeting/Demo

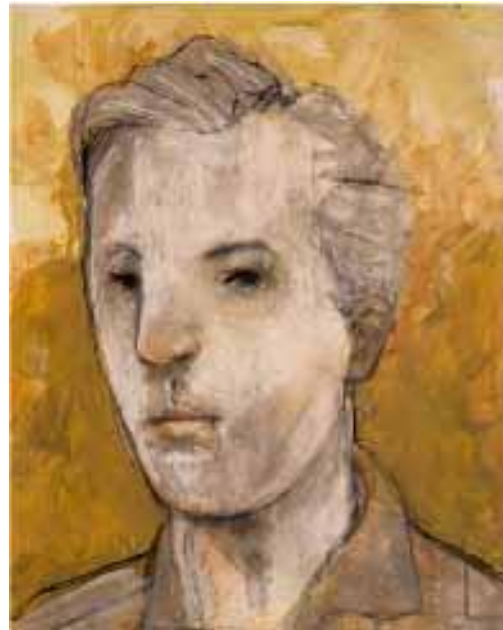


LONGTIME HOUSTON ARTIST AND  
ART INSTRUCTOR WILL  
DEMONSTRATE AT APRIL MEETING  
SUNDAY, APRIL 2, 2 – 3:30 P.M.

Patrick Palmer has been teaching painting at the Glassell School of Art since 1992 and has been the dean since 2010. Throughout his 40-plus years of painting, Palmer placed works in the Metropolitan Museum of Art in New York, the San Francisco Museum of Modern Art, the Museum of Fine Arts, Houston, and many other museum and university

collections.

Patrick will demonstrate the age-old aleatory practice dating to Da Vinci and beyond. The aleatory manner uses acrylic based washes on paper, an opaque solution that achieves transparency due to the high ratio of water to pigment, often 95% or more. Patrick will show how to use this tradition of aleatory mark-making to randomly uncover marks to determine not only the composition but a representational subject matter, in his case, the head.



The Theme for the April Show is  
"Borders and Fences".

Click [HERE](#) for the Prospectus.

Register Here: [April Exhibit -  
Registration](#)

## Thank You IWE Volunteers!

# IWE -- ABUNDANCE OF ART, ABUNDANCE OF VOLUNTEERS

by Donna Van Fleet

Eighty-four paintings came from around the world to be mounted in a breath-taking exhibition in our Gallery. WAS-H is enormously grateful to their artists for their sharing their artistry with us.

And the artists are grateful to WAS-H . . .

*"I'd like to thank all the volunteers who made the 46th IWE possible." ~*

***John Salminen, "Promenade"***

*"Thank you for the amazing show and your hard work!" ~ Lyudmila Tomova, "Rehearsal Break"*

*"Thanks to WAS-H. It was an honor just to be selected into your show." ~ Sid Bingham, "Barking Dogs"*

What does it take to go from this...



to this?



It takes a cheerful uncrating crew under the seasoned guidance of Mike Doan.



And a tireless hanging crew led by Paula Fowler with the incomparable curation of Carla Gauthier.



WAS-H is very blessed to have 5 generous donors who fund awards in the names of loved ones: Art Supply on Alameda, Estate of Odette Rubin, Friends of E. Thomas Kraycirik, the Hebert family, the Jack and Annis Bowen Foundation and past and current members of the WAS-H Board of Directors. Thank you to Laura McMahon for creating loving tributes to those for whom the awards are fondly named, and gratitude also for the devoted labors of Laura and Louise Bateman and their team in managing this year's judging and award process, including the slideshow for the Grand Opening Meeting.

For the website slideshow, thanks to Laura Mossman, fount of knowledge, smoother of feathers, solution-magician, and tireless toiler who carried out a myriad tasks to bring IWE to fruition. For assembling a lasting record as well as a lovely panorama in the form of the Exhibition Catalog, we owe a big debt of gratitude to Beth Graham.

Thanks to Maureen Lewis and her welcoming crew for managing a standing-room-only Members Meeting, and to Kathleen Church, Darlene Dittoe, Beth Graham and Karen Stopnicki for making our beloved building "company-ready".

Special gratitude to Brenda Swenson not only for serving as juror and judge for the Exhibition, as demonstration artist for the Members Meeting and as Workshop instructor, but also for her relentless dedication to overcoming multiple flight delays to get here in time for the proceedings to go on as scheduled.

"Cheers!" to Kathleen Church, Patty Armstrong and their Reception crew for a Grand Opening reception bubbling with camaraderie, cuisine, and libations. And to Rick Wells Photography, Drury Inn and H-E-B for enhancing the festivities with gratis services.

The Exhibition hangs through the month of March, and WAS-H eagerly welcomes throngs of art lovers to come visit, with thanks to Kelly Medrano, Nancy Moody, Veronica Koenig, and their Communications cohort for

spreading the word and to Cheryl Evans for making the communications colorful with her artwork.

To the many more who are not named or pictured here, please be assured your efforts were seen and cherished. Your spirit of community is what makes IWE possible.

---

## IWE Extended Hours

**46th International Watermedia Exhibit  
is Open NOW through March 29, 2023.**

Gallery hours have been extended during the duration of the IWE.

WAS-H Gallery will be open 7 days a week.

Monday - Friday and Saturday & Sunday  
10am - 3pm

[IWE Online Gallery](#)



**First Place Award**

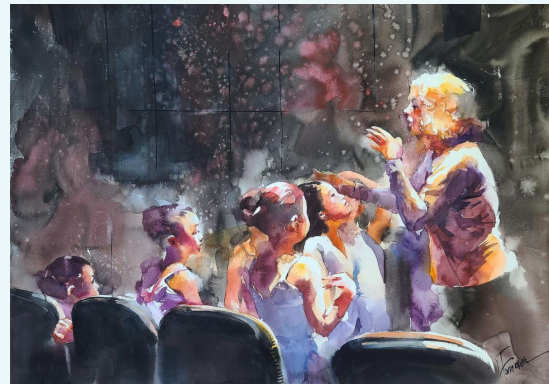
John Salminen  
Promenade Price: \$7000  
Watercolor on paper

33 " x 33 "  
Duluth, MN



**Second Place Award**

Dean Mitchell  
Angel in the Window Price: \$15000  
Watercolor on paper  
22 " x 30 "  
Tampa, FL



**Third Place Award**

Lyudmila Tomova  
Rehearsal Break Price: \$1200  
Watercolor on paper  
18 " x 24 "  
Cary, NC

**Odette Ruben Memorial Award**

Susan Keith  
*Brighter Days Ahead*

**Jack Bowen Award**

Cheryl Wooten  
*Day's Catch*

**Margaret Scott Bock Award**

Monika Pate  
*Antiques and Lace*

**Herbert Family Award**

Daniela Werneck  
*The Blue Butterfly*

**E. Thomas Kraycirik Memorial Award**

Ken Call  
*Red Lollipops*

**Board of Directors Award**

Chris Krupinski  
*Pears and Squares*

**Special Merit Award**

Xiaochang Zhang  
*Bride*

**Merit Award**

Cindy Brabec-King  
*Cherry Bomb*

**Merit Award**

Richard Tiejun Chao  
*A Window to Your Soul*

**Merit Award**

Alison Hendry  
*Missing Charlotte*

**Merit Award**

Colleen Reynolds  
*Hair Like Mine*

**Merit Award**  
Mehrddad Sedghi  
*Reflection of Slence and Darkness*

**Merit Award**  
Carla Gauthier  
*Bay Oaks Light*

**Merit Award**  
Soon Warren  
*Dream of Soaring*

**Merit Award**  
Mohammad Bhatti  
*Desert Nomad*

**Merit Award**  
Sid Bingham  
*Barking Dogs*

**Merit Award**  
R. Mike Nichols  
*Mom*

## Connecting with Vikki Trammell



Vikki Trammell, A Friend of WAS-H  
by Paula Fowler

If you are an artist in Houston, Texas, then you don't have to look far to find a friend who is a wealth of artistic knowledge, a creative force and a joy to know. Her name is Vikki Trammell. She and her husband, Ben Russell, are the owners of Art Supply on Almeda. This store is an artist's treasure and is at a new location, but it's history in Houston goes back more than 60 years. If you have lived here for a while, you might remember the store on Richmond Ave or the one on Main Street. The current address is 5301 Almeda Road. It seems like they have always been here to serve Houston's art community!

We hear Vikki's name a lot around WAS-H. She has been a generous donor of merchandise awards for our major shows and provider of artistic goodies for our monthly lottery at our general meetings. In addition, she gives a 20% discount to you, as a WAS-H member. All you have to do is ask for a discount card when you're shopping.

I recently had the pleasure of sitting down for a visit with Vikki and hearing about how she arrived at this spot. The story begins when Vikki was born the middle child of seven into a military family at Fort Sills, Oklahoma. So moving around, including time in Germany, was part of her childhood. By high school, she was living in Garland, Texas. She started college in the Dallas area, but was eventually drawn to Houston, where she continued her education at University of Houston, by then, a single mom, working, taking care of a baby and studying! She studied marketing, but always managed to add an art class to nurture her creative side. The job she had at this time was at Art Supply on Richmond Avenue which would eventually be owned by her future husband, Ben Russell. Together, they teamed to market art supplies, foster artists by offering studio space, and by becoming integrally involved with the Houston art community.

In 1997, it was necessary to find a new home for Art Supply and they bought a large 1946 New Orleans-style building on Main Street and began a complete remodel that would include retail space, 26 artist studios and 7 live-work spaces. The intimate bond that they had established with the Houston artists was evident during this time, because they were able to remain open, without air conditioning, through a Houston summer...and their customers stayed loyal!

Then 5 years ago, after 22 years on Main Street, it was decided to move once again, this time to a location at 5301 Almeda Road. This time, the space would be built from scratch according to their own design ideas and would include the store, 15 studios and 5 work-live spaces. It is conveniently located in a bustling, interactive community that is emersed in education right off Highway 288 and near the museum district and the medical center and is just a short trip from our WAS-H building. This was a tough time for a transition because Houston had just gone through Hurricane Harvey and the city permitting department was

overwhelmed with the demands of all the rebuilding. And then Covid hit just as they opened! But, once again, their loyal clientele stuck beside them and with a firm plan and perseverance, they emerged with a wonderful new building that has clean lines, high ceilings and artist-friendly light from high windows. Parking is conveniently located behind the store.

When you visit the store, you will be greeted by a staff of 3 full-time and 2 part-time assistants, many of whom are working artists, who know the supplies from their own personal experience. One of those friendly faces, Lucy, has been working at Art Supply for decades and teaches painting in the Heights. They can guide you as you shop and give you expert advice and comparisons between vendors. Vikki makes sure that Art Supply stays up-to-date with new trends by being an active participant in iAMart, a coalition of independent, locally-owned art-materials stores that are committed to helping artists of all experience levels succeed by helping them purchase the best supplies for their individual need and to support and promote local artist, arts organizations and educators.

Vikki also contributes time, and inspiration to others in the Houston art community by being an Advisory Board member of Print Matters and the Community Artists Collective and by being actively involved with, among others, Lawndale Art Center , the Art League and the MFAH Glassell School of Art. She always stays connected has a focus on the art community's needs and fellowship that includes the professional artists as well as the hobbyist.

I hope that you make it to Art Supply and take some time to chat with Vikki the next time you are indulging your urge for new supplies. She is a multidimensional person who is curious about everything, has a broad breath of knowledge (she's affectionately known as "Vikkipedia"!), and approaches life with a sense of humor. She directs her own creative talents toward thinking about and developing Artist's Books. She will enrich you life!

---

## March Classes and Workshops

with seats still available!



### Let's Collage!

Susan Giannantonio  
Sunday, March 12  
9:30 am to 3:30 pm  
\$85 / \$75 for WAS-H Members  
Register [Here](#)



### Painting with Emotion

Katie Steck  
Tuesday, March 14  
10 am to 12 pm  
\$50 / \$40 for WAS-H Members  
Register [Here](#)



Virtual Class/ZOOM  
WC Skills - Mixing Color  
Jason Michael Bentley  
Tuesday, March 14  
12 pm to 3 pm  
\$60 / \$50 for WAS-H Members  
Register [Here](#)



## Strawberries & Blueberries

Les McDonald  
Weekend Workshop  
Saturday & Sunday, March 25 & 26  
9:30 am to 3:30 pm  
\$170 / \$150 for WAS-H Members  
Register [Here](#)

[VIEW ALL CLASSES](#)

## Other opportunities for Houston artists

The Rockport Center for the Arts also has watercolor classes by Tina Bohlman, Glenn Cernosek, Lynn Ferris and Al Kline. To learn more, you can visit their website at: [rockportartcenter.com](http://rockportartcenter.com)

The Crèche Festival Houston is inviting artists to submit work which explores, depicts, or interprets Christ's nativity for a juried and judged exhibition: They would like to see more watercolors in their exhibit. For more information, click [HERE](#)



Share your **news** or write an article to submit for the WASHRAG by sending to our Communications Director, Nancy Moody, at [Washrag@watercolorhouston.org](mailto:Washrag@watercolorhouston.org)

Click [HERE](#) for the latest blog posts.

Send your thoughts about **special events** you'd be interested in or other recommendations to our President, Karen Stopnicki, at [President@watercolorhouston.org](mailto:President@watercolorhouston.org).

Send your ideas about **classes or workshops** you'd be interested in by emailing our Education Director, Beth Graham, at [Education@watercolorhouston.org](mailto:Education@watercolorhouston.org).

For all other questions or comments on any of our programs or services, you may contact the Artist Liaison by email @ [Liaison](#) or by phone during regular gallery hours @ 713.942.9966

---

Gallery/Office Hours: Tuesday - Saturday 10 am - 3 pm  
[Covid Policy](#)

[Classes/Workshops](#)  
[Upcoming Major Workshops](#)  
[Model Lab](#)

[Membership](#)  
[Washrag Blog](#)  
[Calendar of Events](#)

**Watercolor Art Society-Houston** | [www.watercolorhouston.org](http://www.watercolorhouston.org)



Founded in 1975, the Watercolor Art Society – Houston (WAS-H) is a non-profit organization bringing the excitement of water-media to the greater Houston area with outstanding exhibitions, world-class instruction and dedicated community outreach. Year-round opportunities are provided to every level of painter, from novice to the seasoned expert. Art lovers can also enjoy year-round exhibitions in our gallery in the Museum District.

Watercolor Art Society - Houston | 1601 W. Alabama, Houston, TX 77006-4101

[Unsubscribe](#) [admin@watercolorhouston.org](mailto:admin@watercolorhouston.org)

[Update Profile](#) | [Constant Contact Data Notice](#)

Sent by [admin@watercolorhouston.org](mailto:admin@watercolorhouston.org) powered by



Try email marketing for free today!