



February 18, 2022 e-newsletter
A Bi-Monthly Publication

March Events & Recurring Activities

Upcoming Events

Special Exhibition

Join us for March Events!

International Watermedia Exhibition!

March 05 **Meeting/Demo**
Join us for the Opening Activities for the 48th Annual IWE! We start @ 2 pm on Sunday, March 5, with a quick Member Meeting and then quickly transition into a Demo by our Juror/Workshop Instructor, Brenda Swenson!

March 05 **Awards & Reception**
Award winners will be announced following our Demo (3:15 pm). The Reception will be held downstairs following the awards presentation (3:45 pm).

March 10 **Register for the April Exhibit**
Registration Opens on March 10 for the April Exhibition. The theme is "Borders and Fences".

March 11 **Paint-In**
Katie Steck will be the instructor for the Members-only Paint-in on March 11. 10 am - 2 pm.

March 29 **Deadline for April Exhibit**
Wednesday, March 29 at 3 pm is the deadline to register and bring in your paintings for the April Exhibit. April's opening reception will be held on Sunday, April 2.

Website: www.WatercolorHouston.org
Call WAS-H: 713-942-9966 or admin@watercolorhouston.org

[Paint-in Registration](#)

RECURRING WEEKLY CLASSES



SENIORS



WEDNESDAY MORNING
9:30 AM - 12:30 PM



MODEL LAB



WEDNESDAY AFTERNOON
12:30 PM - 3:30 PM



OPEN STUDIO



Open Studio
Each Friday 9 - Noon
Members Only

FRIDAY MORNING
9 AM - 12 PM

☎ 713-942-9966 🌐 www.watercolorhouston.org

No Senior Class or Model Lab on March 8 during the Brenda Swenson Workshop. Weekly classes resume the on March 15. Be sure to sign up!

Help! We need you! Volunteer for IWE!



We still need volunteers for IWE!

Please sign up and tell us what dates you are available and what types of activities you can do.

[Volunteer HERE](#)

March 5th Members Meeting, Demo, IWE Award Presentation and Reception



The March monthly Members Meeting will kick off the International Watermedia Exhibition (IWE). Mark your calendars for **March 5th at 2 p.m.** to see a demo by renowned artist Brenda Swenson, hear the IWE award winners announced and see the exhibition afterwards.

Masks are required for the meeting, and a word about that. While many people have become comfortable being out and about without masks, there are those for whom medical situations remain a significant risk and require them to continue extra protection. Our visiting artist, Brenda Swenson, is one whose personal pre-existing condition along with her husband's recent surgeries necessitates our wearing masks so that she can safely be with us. Thank you for honoring the requirement by wearing a mask at the March Member Meeting.



"Negative painting is one of the most exciting approaches to watercolor I know! The technique is a unique approach of painting around an object to define it in a composition. It is what we don't paint that becomes the most important element." ~ Brenda Swenson

**Come watch Brenda demonstrate the technique.
March 5, 2 p.m.**

Gallery Conversations

**Gallery Conversations
February 2023
*Fire and Ice***

For our theme this month we chose a variation to the usual Valentine's Day motifs. Of course this can be a time of sweet sentiments, but also



we may feel a need to be a bit dramatic. The paintings in this exhibit rise to the challenge with flair, literally! There are many examples of the colorful contrasts between fire and ice as well as expressive works. Much appreciation goes to our volunteers Leisa Patin, Paula Fowler, Mansueto Fabugais, Patty Armstrong, Laura Mossman and Reese Geigerman for

creating a great display.

Our judge was **Dena M. Woodall, PhD**. Curator of Prints and Drawings at the Museum of Fine Arts, Houston. She oversees a varied collection of drawings, watercolors, prints, artists' books, and print matrices created between the 12th-21st centuries from around the world. Dena earned her Ph.D. in art history from Case Western Reserve University. Prior to joining the MFAH in 2008, Dr. Woodall served as fellow in the prints & drawings department at the Cleveland Museum of Art and research associate at the Nelson-Atkins Museum of Art. She is currently working on an exhibition and catalogue of the Stuart Collection, dedicated to British drawings and watercolors from the 18th and 19th centuries. She is an affiliated professor in art history at Rice University. Dena has been a member of the Print Council of America since 2012. In the last few years, she has assisted with editing the *PCA Newsletter*.

Dr. Woodall enjoyed reviewing our entries and was very meticulous about her selections. She would like to encourage our members to visit the Museum of Fine Arts, Houston and particularly remember that many paintings and works may not be on display but are available to view upon request.



**First Place: Nan Wright
"Winter AM"**

DW: The artist has expressed a strong sense of place in this watercolor with intensity and emotionalism and it has a commanding presence. It is accomplished in its brilliant use of color, varied line work to indicate plant life, and response to cold and heat. The artist has deftly achieved reflections and there is a good use of

textured paper.

NW: Snow...I love it! Also snowshoeing, sledding, forest path walks, and downhill skiing. A "fun fact", before COVID, I was certified to teach the blind to ski in a national disabled sports program. I love the quiet flakes drifting down in the moonlight, the energy of a ferocious snowstorm, and obviously the way the morning sun nudges the world awake. Snow is one of my favorite things to paint. It's not merely leaving the original paper unpainted, it's the subtle shifts of

cool violet shadows and warm glows on nature's white canvas. I'm honored to have been chosen for the prize. Thanks so much!

Cissy Geigerman: I must add my own comment here, *Paint what you love!* Here is another example of an artist's ability to convey what is heartfelt.



Second Place:
Fontaine
Jacobs
"Smoking
Stogie"

DW: I probably shouldn't encourage smoking, but I was captured by this scene with its restrained color palette to portray a particular moment. It has strong draftsmanship. Also, one gets an impression of the weight of the glass, the coldness of the ice, and the wafting smoke in the air. There is also an excellent sense of depth.

FJ: I love working with yupo. I decided to use a monochrome palette because with this subject, I needed to do some manipulations and extra colors can easily get muddled with yupo. This paper is fun if you stick with it.

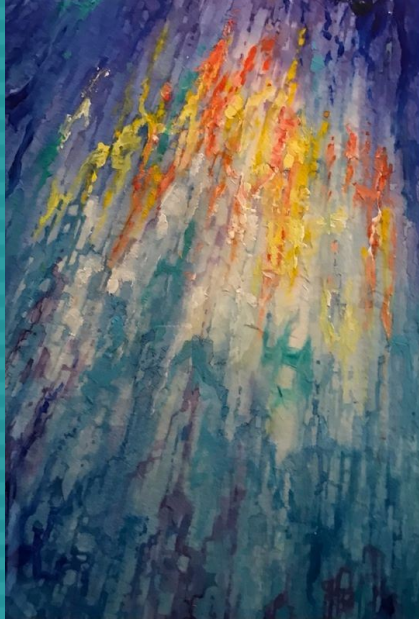


Third Place:
Jackie Liddell
"Opposites
Attract"

DW: The theme is almost exact in this image. It is a good

close up view capturing the movement of the flames and reflections in both the ice and the fire. The staccato mark making is also worth noting.

JL: The inspiration for this painting came to me as I was sitting near our outdoor fireplace with the flames turned up. I saw phoenixes, and dragons! The wine may have helped. As for the title, I must say that my husband and I have been together since high school and are definitely opposites, still attracted.



Honorable Mention: Erik Sprohge
"Fire and Ice"

DW: This abstracted composition evokes an aura of greatness or monumentality with its upward thrust. It has a good gradation from cool to warm colors.

ES: I had an existing watercolor that was close to the theme but not quite. I decided to paint over the whole thing with acrylics, I hoped this would be "legal". What to name it? "Fire and Ice" seemed the only way to go!



Honorable Mention: Irene Sheytman
"Lake Bled"



DW: This work seems to aspire to the landscape paintings of the German Romantic Caspar David Friedrich. It seeks contemplation of nature in the presence of structures made by humans and the dramatic sky encourages it. It has a believable sense of space and there is an interesting play of color in the icy waters, the sky, the rocky mountain and the theme is carried out in the hues of the two buildings.

IS: I do like painting architecture and tried to incorporate some into the theme. I imagined wintertime mountains with castles on top and icy waters below, creating a dramatic sky to complete the mood.



Honorable Mention: Mary Klug
"Tuskawanta Waits"

DW: I appreciate the defining elements of the composition from foreground, to middle ground, to background. The play of light and shadow has a desired outcome over the snow and I think it is always good to utilize the exposed, bare paper.

MK: This is a painting of Lake Ronkonkoma on Long Island, NY. Legend has it that every year, the Indian Princess claims the life of one male in search of her true love. (I've lived there for 32 years, and just about every year, a young man has drowned in this spring fed lake.) So it seemed appropo that Princess Tuskawanta would be anxiously awaiting the Spring thaw on this early morning in late winter, when I took this photo.

[View February Online Show](#)



Les McDonald, Jr.
WAS-H Artist/ Instructor
Spotlight 2023

Since 1967, Les McDonald, Jr. has resided in Houston, Texas. He received a BS degree from Sam Houston State University majoring in commercial art with a minor in photography. He worked in advertising and owned an advertising agency until 1986. Following that

career, Les determined to become a full-time fine artist. Switching from painting in oils to working in watercolors, he became a member of WAS-H. Les says that watercolors are his favorite media because he can experiment more with watercolor than any other media combined. With watercolors Les like to paint, drool, scratch, dab, mop, salt and incorporate a wide variety of other skills.

Les believes that nature presents us with a never-ending source of memorable images. With his paintings, he captures these moments and freezes them in time. As an artist who paints in a highly realistic style, he captures the detail, the mood, and the essence of the subjects that he paints. One collector of Les' works says that he can feel the salt air on his neck when he looks at Les' painting depicting birds hitching a ride on the Bolivar ferry. Another collector said that when he looks at a Les McDonald painting, he knows that Les has been there as he captures the scene so realistically. People frequently mistake Les' paintings for photographs.



Les is frequently asked, "How are you able to paint with such high detail?" Because of his keen desire to share his knowledge with students, Les has responded to these questions by offering to instruct students. In 2014 he began teaching watercolor workshops at the Watercolor Art Society in Houston. Through classes at WAS-H and other venues, he demonstrates and teaches techniques that bring paintings from a highly detailed drawing to a finished painting. Students comment that they appreciate his patience, knowledge, of materials, methods, and encouragement.

Les began entering WAS-H competitions in the 1990's and was encouraged when he was first accepted in the International Show. Since then, he has been accepted in nine International Shows and numerous Membership Shows. In 2013, Les achieved Elite Signature status at WAS-H. He also achieved signature status in the Society of Watercolor Artists and the South Western Watercolor Artists Association. Les' paintings have been selected for many awards. His painting "Dining Out" won a first-place award in the 2021 WAS-H Membership Show. He is



especially excited about having this painting accepted in the 2023 American Watercolor Society International Show in New York City. Les has featured paintings published in the Splash 2017, 2021, 2022 and 2023 editions. Les continuously takes his inspiration for his paintings from nature which generates his desire to paint. When he is not hunting or fishing, Les can be reached at his Houston studio.

Link to the entire article on the [Washrag Blog](#) and leave comments.



Les's next workshop is March 25, 26 "Strawberries & Blueberries."

This is the photo we will be working from.

Click [HERE](#) for more details on the workshop.

New Members Q&A

This section will answer questions from our newest members.

How is IWE different from the other monthly exhibits at WAS-H?

There are several differences. The IWE is:

1. A juried exhibit.
2. Open to the general public.
3. International: Paintings from around the world are sent to Houston to participate.
4. Registration is via a 3rd party website, Cafe.
5. Highly competitive.

Most regular monthly shows:

1. Only members can participate.
2. All entries will be in the show, unless the painting does not meet the prospectus' requirements.
3. The online registration is through the WAS-H website.
4. Are judged but not juried.

What's the difference between a "judged" and "juried"?

Our monthly shows are "judged", which means that we invite a judge to pick the 1st,



New Member Orientation

February 25, 2023

11:00 AM - 12:00 PM

Facilitators:

Maureen Lewis, Membership Director &
Laura Mossman, Artist Liaison

Designed to help new members understand the benefits of being a member. Anyone may attend!

This event is **free** but requires registration.

[Register HERE](#)

The IWE and AME (Annual Members Exhibit

2nd & 3rd place. All entries hang in the show and not eliminated.

in October) are both "juried" shows. This means that a judge determines which paintings are will selected to participate in the show.

Getting into a juried show is indeed a badge of honor and indicates that your work has caught the eye of the judge and adheres to general artistic principals.

Upcoming Classes



VIRTUAL

Watercolor Foundations Essential Techniques

Jason Michael Bentley
Tuesday & Wednesday
March 7 & 8

12:00 - 3:00pm

\$90 WAS-H/\$110 public

[Register HERE](#)



VIRTUAL

Landscapes in Acrylics/Mixed Media/Collage

Susan Giannantonio
Four Tuesday afternoons
March 7, 14, 21, 28

1:00 - 3:00pm

\$120 WAS-H/\$160 public

[Register HERE](#)



In Person

Landscape Painting

Mohammad Ali Bhatti
Four Friday afternoons
March 10, 17, 24, 31

4:00 - 7:00pm

\$180 WAS-H/\$220 public

[Register HERE](#)



In Person

PAINT-IN

Instructor: Katie Steck
Members Only
Saturday

March 11, 2023

10:00am-2:00pm

[Register HERE](#)



In Person
Let's Collage!
 Susan Giannantonio
 Sunday, March 12
 9:30am - 3:30pm
 \$75 WAS-H/\$85 public
[Register HERE](#)



In Person
Painting with Emotion
 Katie Steck
 Tuesday morning
 March 14
 10:00am - 12:00 noon
 \$40 WAS-H/ \$50 public
[Register HERE](#)



VIRTUAL
Watercolor - Skills
Mixing Color
 Jason Michael Bentley
 Tuesday
 March 14
 12:00 - 3:00pm
 \$50 WAS-H/\$60 public
[Register HERE](#)



In Person
Great Granulators!
 Carla Gauthier
 Saturday & Sunday
 March 18 & 19
 9:30am - 3:30pm
 \$150 WAS-H/\$170 public
[Register HERE](#)



In Person
Strawberries and Blueberries
Les McDonald, Jr.
Saturday & Sunday
March 25 & 26
9:30am - 3:30pm
\$150 WAS-H/\$170 public
[Register HERE](#)



In Person
Weaving Whites into Your Paintings
Carla Gauthier
Tuesday, March 28
9:30am - 3:30pm
\$75 WAS-H/\$85 public
[Register HERE](#)

[View All CLASSES](#)

Share your news and ideas!

[Media Contact Info](#)

Share **news** or write an article. Submit to Communications Director
Nancy Moody
[Washrag](#)

Send **class or workshop** ideas to the Education Director
Beth Graham
[Education](#)

Send special **event** ideas or recommendations to the President
Karen Stopnicki
[President](#)

For all other questions or comments on any of our programs or services, you may contact the Artist Liaison by email @ [Liaison](#) or by phone during regular gallery hours @ 713.942.9966

[Classes/Workshops](#)
[Upcoming Major Workshops](#)
[Model Lab](#)

[Membership](#)
[Washrag Blog](#)
[Calendar of Events](#)

Watercolor Art Society-Houston | www.watercolorhouston.org



Founded in 1975, the Watercolor Art Society – Houston (WAS-H) is a non-profit organization bringing the excitement of water-media to the greater Houston area with outstanding exhibitions, world-class instruction and dedicated community outreach. Year-round opportunities are provided to every level of painter, from novice to the seasoned expert. Art lovers can also enjoy year-round exhibitions in our gallery in the Museum District.