

The logo features a stylized 'W' inside a circular frame with a rainbow gradient. To the right of the logo, the word 'Washrag' is written in a large, black, brush-stroke font. Below it, the word 'NEWSLETTER' is in a smaller, black, sans-serif font, and 'Watercolor Art Society - Houston' is in an even smaller, black, sans-serif font.

# Washrag

## NEWSLETTER

Watercolor Art Society - Houston

November 19, 2022 e-newsletter  
A Bi-Monthly Publication

The WAS-H office and gallery will be closed for Thanksgiving November 24-25.



Come to the Gallery and celebrate a fabulous year of watercolor wonders! We hope you find connection and comradery here.

We will have several activities you can participate in while at the party, to include:

1. Contribute to a **collaborate work** of art with your fellow WAS-H Members (upstairs)
2. Take a **selfie** at our selfie station. Cardboard Santa at your disposable!
3. Create your **Artist profile** to be posted on the WAS-H website. You can take your headshot at the selfie station and email a bio to the Artist Liaison. She will set you up on a new page called "Artist Profiles".
4. **Feast** on one of the many "pot-luck" dishes.
5. Participate in our **mini-program** upstairs. We would like to invite members to share a 3-5 minute talent with the group. To be one of the selected mini-program presenters, email [Katie Steck](#) your name, describe your talent and estimated length of your presentation. Katie will notify you if you are selected for that day's agenda.
6. **Purchase** a special painting for your holiday gift-giving! It's cash and carry in this month's exhibit, so get them while they last!
7. Participate in our **Silent Auction**. We will have a variety of items in our silent auction. Auction winners will be notified via email/phone if they win.

### WAS-H Holiday Pot-Luck Sunday December 4 3 - 5 pm

This is a "pot-luck" event, so bring a dish or treat to share. To ensure we have a variety of food, snacks, and drinks email the artist liaison or click on the link below to fill out a form with the item you plan to bring so we can ensure we do not duplicate efforts.

#### [Pot Luck Form](#)

Bring your dishes "ready to serve." We will not be able to prep your dish, so all the slicing and dicing, arranging and mixing should be done at home. Take a piece of masking tape and put your name on the bottom of your dish so that it gets home afterwards.

For prepared dishes, bring an index card with you to include your name, your dishes name and main ingredients (in case of

Friends, food, art and special times together. What could be more fun than that!?!)

PS: There is **no general meeting or demo** this month. This holiday pot-luck function takes the place of the monthly meeting/demo.

food allergies.) This way others will know who made the dish and can ask additional questions, if needed.



## Want to help with the party?

We can't do these things without you! We need volunteers to help with the holiday party. Specifically, we need:

1. **Decorations leader:** we have some decorations but need someone to help coordinate the decorating.
2. **Selfie Station:** We have a few supplies but need someone to help set up the area and provide photographic expertise.
3. **Party favors:** we have supplies but need help with coordination/assembly.
4. **Collaborative art table:** we have supplies. You coordinate set up.
5. **Set up crew:** arranging tables/chairs upstairs

If you are interested in helping, email Cissy Geigerman at [gallerydirector@watercolorhouston.org](mailto:gallerydirector@watercolorhouston.org).

### Pot-Luck Link

What are you bringing to the Holiday Party?

[Click here](#)

### Party Volunteer?

Let Cissy know how you will help with the Holiday Party. Click on her name below to send her an email.

Email [Cissy Geigerman](#)

### Mini-Program Talent?

Want to share your talent in 3-5 minutes in our Mini-Program at the holiday party?

Email [Katie Steck](#)

## General Announcements

### January 2023 Exhibit

Theme: *EXPERIMENTAL*

Artists are encouraged to use non-traditional ideas and materials for this month's exhibit. Any surface is allowed but media must be at least 80% water soluble such as watercolor, gouache, acrylic, egg tempura, casein, charcoal or ink.

For more details, here is the prospectus: [January Prospectus](#)

### February 2023 Exhibit

Theme: *FIRE & ICE*

Drama, passion! February is the month for both. Paintings are a way to express our emotions without spoken language. This month, we will try to make a connection with others through this outlet. Paintings can have general subjects and aim to convey an emotional aspect.

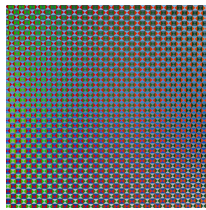
February prospectus will be available soon.

The next  
**New Members  
Orientation**

will be held on  
December 17  
10:30 am - 11:30 am

*While intended for new  
members, everyone is  
welcome to join us.  
It's free!*

Please sign up  
here: [Orientation](#)



**46th Annual  
International  
Watermedia Exhibit**

It's just around the corner!

Deadline: January 13, 2023

Prospectus: [Click Here](#)

Sign-up: [Call for Entry](#)

**Non-Profit CPA Needed**

WAS-H is looking for a firm  
with experience in accounting  
and tax filings for non-profit  
entities. The firm would  
complete the Annual Tax  
Return (Form 990) for WAS-  
H.

If you know of someone,  
please email their contact  
information by clicking on this  
link:

[CPA INFO](#)

## Recap of November Demo by Ed Pettitt



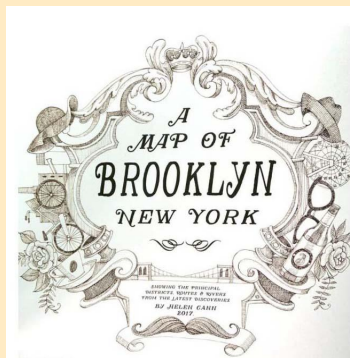
### *Telling your story by map-making*

At November's Membership Meeting, a  
man of many talents, Ed Pettitt,  
demonstrated how he combines his  
passions for urban planning and  
watercolor painting to paint stories by  
using the elements of map-making.

Ed explained three elements that define  
a map . . .

#### COMPASS

A compass describes the  
directional orientation of the  
information on the map and  
includes at least one cardinal  
direction (North, East, South,  
West).

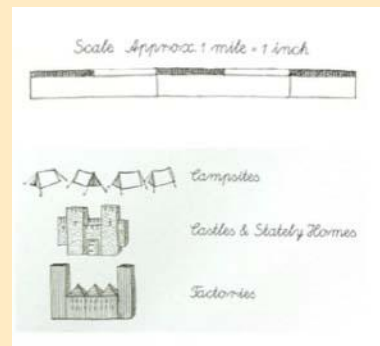


#### CARTOUCHE

A cartouche contains the title  
of the map in an ornate box  
overlaid on top of some  
portion of the map.

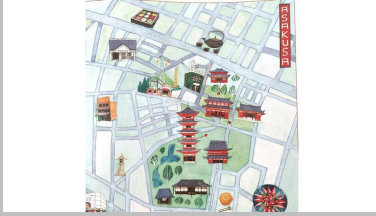
#### LEGEND

A key or legend describes the  
symbols used within the map.



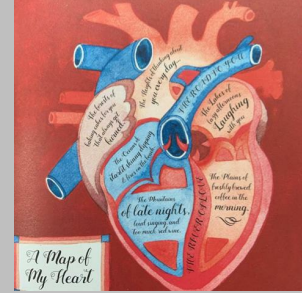
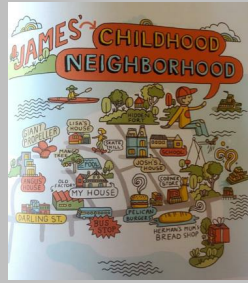
. . . then he showed how one can freewheel to deploy the elements to create  
one's own maps.





maps of travels. . .

maps of life stories. . .



maps of anything. . .

Join Ed for four Thursday evenings this coming February when he will guide us through creating our own maps. Watch for Ed's class to be open for registration in December.

## Recap Nov/Dec Gallery Show

### “Holiday Bazaar”

By Cissy Geigerman

WAS-H Gallery Co-Director

Our gallery is “a-WASH” with small treasures just in time for holiday shopping. This exhibit is full of small framed paintings and unframed works that are available to purchase and carry away. It is amazing to see so much creative effort in these little wonders. Restrictions for framed paintings are lifted and the effects are handsome indeed.



In order to display everything, we decided to hang the unframed, matted paintings on soft gallery panels. The lesson here is, be careful what you wish for! Our members really stepped up and submitted over 90 framed paintings and over 200 unframed items. We were able to hang almost everything with the timely help of our volunteers. Bella Attia is a decorating whiz. She was given a bundle of supplies, a free rein, and the results are great! Mansueto Fabugais is becoming expert in hanging frames at just the right height. Irene Sheytman was just walking through and jumped in to help hang the matted paintings, and re-hang them because they were falling off. We are delighted to have positive feedback from visitors at the reception.

Our random winner of a \$100.00 gift is William Owens. He also has framed paintings on display. Be sure to visit the gallery often during this show because the paintings may be replaced with new works as they are sold.

The show continues through the end of the year.

We invite you to join us during our member holiday party on December 4 if you haven't seen the exhibit yet. It will be FUN!

## SMALL TREASURES Exhibit

Artists have submitted almost **400 pieces** of **original art** for your viewing & purchasing pleasure.

The Gallery is open Tuesday - Saturday from 10am - 3pm,  
1601 West Alabama, Houston, TX 77006.

## Upcoming Classes



**IN PERSON** - Pen & Ink and Watercolor Architecture  
Joanie Hughes  
Saturday & Sunday 9:30am-3:30pm  
**December 3 & 4**

**VIRTUAL** - An Introduction to Florals in **Gouache- Afternoon Class** 1-3pm  
Laura Spector  
Tuesday afternoons **December 6 & 13**

**VIRTUAL** - An Introduction to Florals in **Gouache- Evening Class** 7-9pm  
Laura Spector  
Tuesday evenings **December 6 & 13**

*Gouache is perfect for travel!*

**WAS-H members priority  
REGISTRATION for the  
Winter/Spring Classes  
(January-May 2023)  
opens on December 1st.  
Click below for all the details!**

**CLASSES**

**General public registration  
opens December 8th.**

**Introduction to Watercolors** -Fred Kingwill  
Saturday & Sunday  
**November 26 & 27, 9:30am-3:30 pm**

**Intermediate Watercolors** - Fred Kingwill  
Wednesday evenings 6-9 pm  
**December 7, 14, 21, 28**

**IN PERSON** - Find Your Path - Afternoons  
Carla Gauthier  
Four Thursday afternoons 1-4pm  
**December 1, 8, 15, and 22**

## GIVING TUESDAY

### *What is Giving Tuesday?*

GivingTuesday is global generosity movement. It takes place this year on November 29.

The movement was created in 2012 as a simple idea: create a day that encourages people to do good. Today it inspires hundreds of millions of people to give, collaborate, and celebrate generosity.

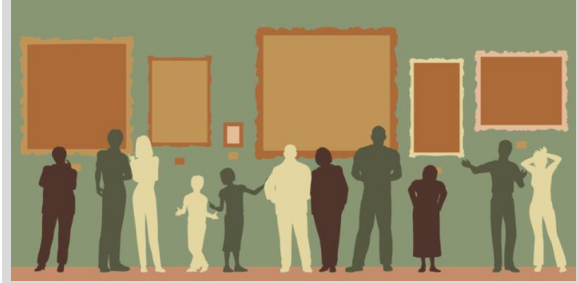
### *WAS-H Group Tours*

Do you have a group who doesn't know about WAS-H? Or you are looking for a field trip for your art students?

We offer group tours by appointment only. The tour lasts about 30 minutes where we share a history of WAS-H, give them info about membership, classes and exhibits. Show them the classroom upstairs and answer questions.

To schedule a group tour, send an email to [Tour](#).

You can show your generosity in a variety of ways—whether it's helping a neighbor, advocating for an issue, sharing a skill, or giving to causes, everyone has something to give and every act of generosity counts.



## Share your news and ideas!

### Media Contact Info

Share **news** or write an article. Submit to Communications Director  
Nancy Moody  
[Washrag](#)

Send **class or workshop** ideas to the Education Director  
Beth Graham

Send special **event** ideas or recommendations to the President  
Karen Stopnicki

[Education](#)

[President](#)

For all other questions or comments on any of our programs or services, you may contact the Artist Liaison by email @ [Liaison](#) or by phone during regular gallery hours @ 713.942.9966

Gallery/Office Hours: Tuesday - Saturday 10 am - 3 pm  
[Covid Policy](#)

[Classes/Workshops](#)  
[Upcoming Major Workshops](#)  
[Model Lab](#)

[Membership](#)  
[Washrag Blog](#)  
[Calendar of Events](#)

Watercolor Art Society-Houston | [www.watercolorhouston.org](http://www.watercolorhouston.org)



Founded in 1975, the Watercolor Art Society – Houston (WAS-H) is a non-profit organization bringing the excitement of water-media to the greater Houston area with outstanding exhibitions, world-class instruction and dedicated community outreach. Year-round opportunities are provided to every level of painter, from novice to the seasoned expert. Art lovers can also enjoy year-round exhibitions in our gallery in the Museum District.